



GPS2 Polyclonal Antibody

Catalog No	BYab-03904
Isotype	IgG
Reactivity	Human;Mouse;Rat
Applications	WB;ELISA
Gene Name	GPS2
Protein Name	G protein pathway suppressor 2
Immunogen	The antiserum was produced against synthesized peptide derived from human GPS2. AA range:11-60
Specificity	GPS2 Polyclonal Antibody detects endogenous levels of GPS2 protein.
Formulation	Liquid in PBS containing 50% glycerol, 0.5% BSA and 0.02% sodium azide.
Source	Polyclonal, Rabbit,IgG
Purification	The antibody was affinity-purified from rabbit antiserum by affinity-chromatography using epitope-specific immunogen.
Dilution	Western Blot: 1/500 - 1/2000. ELISA: 1/40000. Not yet tested in other applications.
Concentration	1 mg/ml
Purity	≥90%
Storage Stability	-20°C/1 year
Synonyms	GPS2; G protein pathway suppressor 2; GPS-2
Observed Band	40kD
Cell Pathway	Nucleus . Mitochondrion . Cytoplasm, cytosol . Sumoylation regulates the subcellular location (PubMed:24943844). Relocates from the mitochondria to the nucleus following desumoylation, leading to mediate mitochondrial stress response (By similarity). .
Tissue Specificity	Widely expressed.
Function	function:Suppresses G-protein- and mitogen-activated protein kinase-mediated signal transduction.,sequence caution:Wrong choice of frame.,subunit:Component of the N-Cor repressor complex, at least composed of NCOR1, NCOR2, HDAC3, TBL1X, TBL1R, CORO2A and GPS2.,tissue specificity:Widely expressed.,
Background	This gene encodes a protein involved in G protein-mitogen-activated protein kinase (MAPK) signaling cascades. When overexpressed in mammalian cells, this gene could potentially suppress a RAS- and MAPK-mediated signal and interfere

Nanjing BYabscience technology Co.,Ltd



with JNK activity, suggesting that the function of this gene may be signal repression. The encoded protein is an integral subunit of the NCOR1-HDAC3 (nuclear receptor corepressor 1-histone deacetylase 3) complex, and it was shown that the complex inhibits JNK activation through this subunit and thus could potentially provide an alternative mechanism for hormone-mediated antagonism of AP1 (activator protein 1) function. [provided by RefSeq, Jul 2008],

matters needing attention

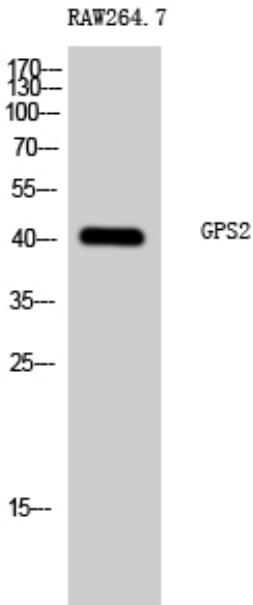
Avoid repeated freezing and thawing!

Usage suggestions

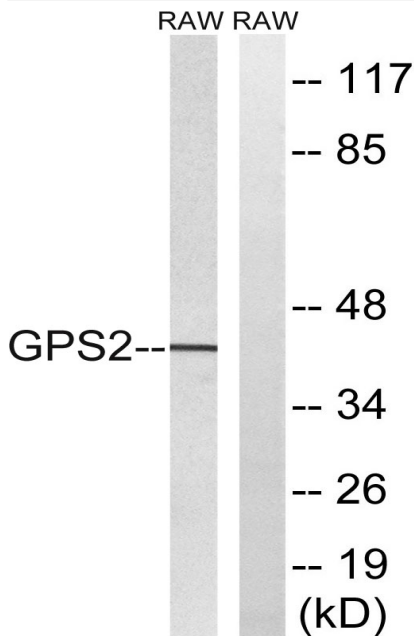
This product can be used in immunological reaction related experiments. For more information, please consult technical personnel.



Products Images



Western Blot analysis of RAW264.7 cells using GPS2 Polyclonal Antibody cells nucleus extracted by Minute TM Cytoplasmic and Nuclear Fractionation kit (SC-003, Invent biotech, MN, USA).



Western blot analysis of lysates from RAW264.7 cells, using GPS2 Antibody. The lane on the right is blocked with the synthesized peptide.