



Epsin 1 Polyclonal Antibody

| | |
|---------------------------|---|
| Catalog No | BYab-03859 |
| Isotype | IgG |
| Reactivity | Human;Mouse;Rat |
| Applications | WB;ELISA |
| Gene Name | EPN1 |
| Protein Name | Epsin-1 |
| Immunogen | Synthesized peptide derived from Epsin 1 . at AA range: 140-220 |
| Specificity | Epsin 1 Polyclonal Antibody detects endogenous levels of Epsin 1 protein. |
| Formulation | Liquid in PBS containing 50% glycerol, 0.5% BSA and 0.02% sodium azide. |
| Source | Polyclonal, Rabbit,IgG |
| Purification | The antibody was affinity-purified from rabbit antiserum by affinity-chromatography using epitope-specific immunogen. |
| Dilution | Western Blot: 1/500 - 1/2000. ELISA: 1/40000. Not yet tested in other applications. |
| Concentration | 1 mg/ml |
| Purity | ≥90% |
| Storage Stability | -20°C/1 year |
| Synonyms | EPN1; Epsin-1; EH domain-binding mitotic phosphoprotein; EPS-15-interacting protein 1 |
| Observed Band | 85kD |
| Cell Pathway | Cytoplasm . Cell membrane ; Peripheral membrane protein . Nucleus . Membrane, clathrin-coated pit . Associated with the cytoplasmic membrane at sites where clathrin-coated pits are forming. Colocalizes with clathrin and AP-2 in a punctate pattern on the plasma membrane. Detected in presynaptic nerve terminals and in Golgi stacks. May shuttle to the nucleus when associated with ZBTB16/ZNF145 (By similarity). . |
| Tissue Specificity | Brain,Epithelium,Mammary gland, |
| Function | domain:The DPW repeat domain is involved in AP2A2 and clathrin binding.,domain:The NPF repeat domain is involved in EPS15 binding.,function:Binds to membranes enriched in phosphatidylinositol-4,5-bisphosphate (PtdIns(4,5)P2). Modifies membrane curvature and facilitates the formation of clathrin-coated invaginations (By similarity). Regulates receptor-mediated endocytosis.,online information:The bubble's bend -Issue 42 of January 2004,PTM:Phosphorylated on serine and/or |

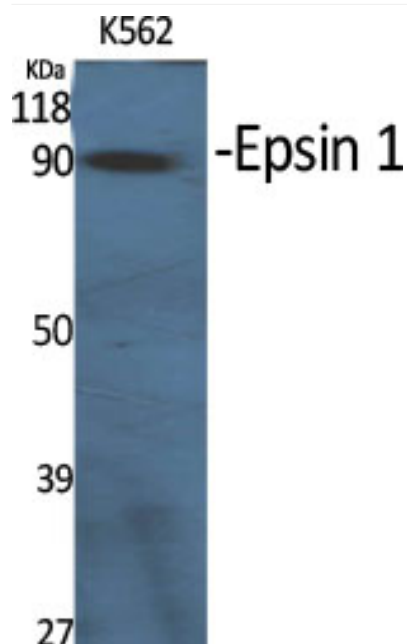
Nanjing BYabscience technology Co.,Ltd



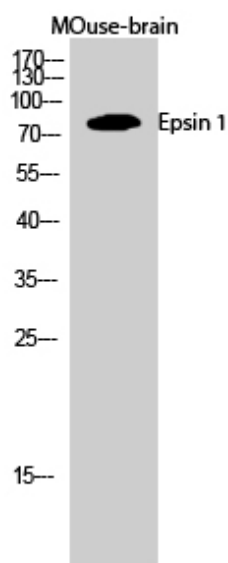
| | |
|---------------------------|--|
| | threonine residues in mitotic cells. Phosphorylation reduces interaction with REPS2, AP-2 and the membrane fraction. Depolarization of synaptosomes results in dephosphorylation.,PTM:Ubiquitinated.,similarity:Belongs to the epsin family.,similarity:Contains 1 ENTH (epsin N-terminal homology) domain.,similarity:Contains 2 UIM (ubiquitin-interacting motif) repeats.,subcellular location:Associated with the cytoplasmic membrane |
| Background | This gene encodes a member of the epsin protein family. The encoded protein binds clathrin and is involved in the endocytosis of clathrin-coated vesicles. Loss of function of this gene is associated with reduced tumor growth and progression in certain cancer types. [provided by RefSeq, Mar 2016], |
| matters needing attention | Avoid repeated freezing and thawing! |
| Usage suggestions | This product can be used in immunological reaction related experiments. For more information, please consult technical personnel. |



Products Images



Western Blot analysis of various cells using Epsin 1
Polyclonal Antibody diluted at 1:1000



Western Blot analysis of MOuse-brain cells using Epsin 1
Polyclonal Antibody diluted at 1:1000

Nanjing BYabs science technology Co.,Ltd

网址: www.njbybio.com

官方热线: 025-5229-8998

监督电话: 15950492658