



Eps8L3 Polyclonal Antibody

Catalog No	BYab-03858
Isotype	IgG
Reactivity	Human;Rat;Mouse;
Applications	IHC;IF;ELISA
Gene Name	EPS8L3
Protein Name	Epidermal growth factor receptor kinase substrate 8-like protein 3
Immunogen	The antiserum was produced against synthesized peptide derived from human EPS8L3. AA range:401-450
Specificity	Eps8L3 Polyclonal Antibody detects endogenous levels of Eps8L3 protein.
Formulation	Liquid in PBS containing 50% glycerol, 0.5% BSA and 0.02% sodium azide.
Source	Polyclonal, Rabbit,IgG
Purification	The antibody was affinity-purified from rabbit antiserum by affinity-chromatography using epitope-specific immunogen.
Dilution	Immunohistochemistry: 1/100 - 1/300. Immunofluorescence: 1/200 - 1/1000. ELISA: 1/10000. Not yet tested in other applications.
Concentration	1 mg/ml
Purity	≥90%
Storage Stability	-20°C/1 year
Synonyms	EPS8L3; EPS8R3; Epidermal growth factor receptor kinase substrate 8-like protein 3; EPS8-like protein 3; Epidermal growth factor receptor pathway substrate 8-related protein 3; EPS8-related protein 3
Observed Band	67kD
Cell Pathway	Cytoplasm .
Tissue Specificity	Colon,
Function	similarity:Belongs to the EPS8 family.,similarity:Contains 1 SH3 domain.,subunit:Interacts with ABI1. Part of a complex that contains SOS1, ABI1 and EPS8L2.,
Background	This gene encodes a protein that is related to epidermal growth factor receptor pathway substrate 8 (EPS8), a substrate for the epidermal growth factor receptor. The function of this protein is unknown. Alternatively spliced transcript variants encoding different isoforms exist. [provided by RefSeq, Jul 2008],

Nanjing BYabs science technology Co.,Ltd

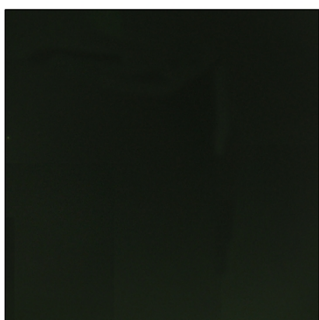
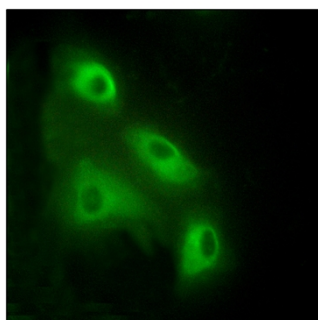
**matters needing attention**

Avoid repeated freezing and thawing!

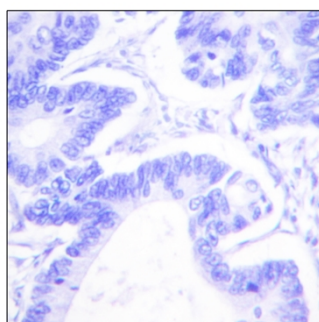
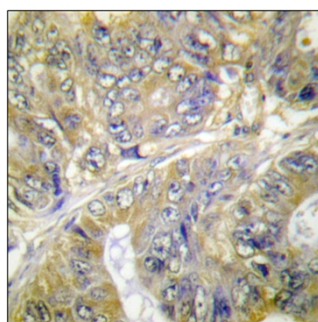
Usage suggestions

This product can be used in immunological reaction related experiments. For more information, please consult technical personnel.

Products Images



Immunofluorescence analysis of HeLa cells, using EPS8L3 Antibody. The picture on the right is blocked with the synthesized peptide.



Immunohistochemistry analysis of paraffin-embedded human colon carcinoma tissue, using EPS8L3 Antibody. The picture on the right is blocked with the synthesized peptide.

Nanjing BYabscience technology Co.,Ltd

网址: www.njbybio.com

官方热线: 025-5229-8998

监督电话: 15950492658