



CNPase Polyclonal Antibody

Catalog No	BYab-03780
Isotype	IgG
Reactivity	Human;Mouse;Rat
Applications	WB;IHC;IF;ELISA
Gene Name	CNP
Protein Name	2',3'-cyclic-nucleotide 3'-phosphodiesterase
Immunogen	The antiserum was produced against synthesized peptide derived from human CNPase. AA range:59-108
Specificity	CNPase Polyclonal Antibody detects endogenous levels of CNPase protein.
Formulation	Liquid in PBS containing 50% glycerol, 0.5% BSA and 0.02% sodium azide.
Source	Polyclonal, Rabbit,IgG
Purification	The antibody was affinity-purified from rabbit antiserum by affinity-chromatography using epitope-specific immunogen.
Dilution	WB: 1/500 - 1/2000. IHC: 1/100 - 1/300. ELISA: 1/40000.. IF 1:50-200
Concentration	1 mg/ml
Purity	≥90%
Storage Stability	-20°C/1 year
Synonyms	CNP; 2'; 3'-cyclic-nucleotide 3'-phosphodiesterase; CNP; CNPase
Observed Band	47kD
Cell Pathway	Membrane ; Lipid-anchor . Melanosome . Firmly bound to membrane structures of brain white matter. .
Tissue Specificity	Brain,Skin,
Function	catalytic activity:Nucleoside 2',3'-cyclic phosphate + H(2)O = nucleoside 2'-phosphate.,similarity:Belongs to the cyclic nucleotide phosphodiesterase family.,subcellular location:Firmly bound to membrane structures of brain white matter. Identified by mass spectrometry in melanosome fractions from stage I to stage IV.,
Background	catalytic activity:Nucleoside 2',3'-cyclic phosphate + H(2)O = nucleoside 2'-phosphate.,similarity:Belongs to the cyclic nucleotide phosphodiesterase family.,subcellular location:Firmly bound to membrane structures of brain white matter. Identified by mass spectrometry in melanosome fractions from stage I to stage IV.,

Nanjing BYabs science technology Co.,Ltd



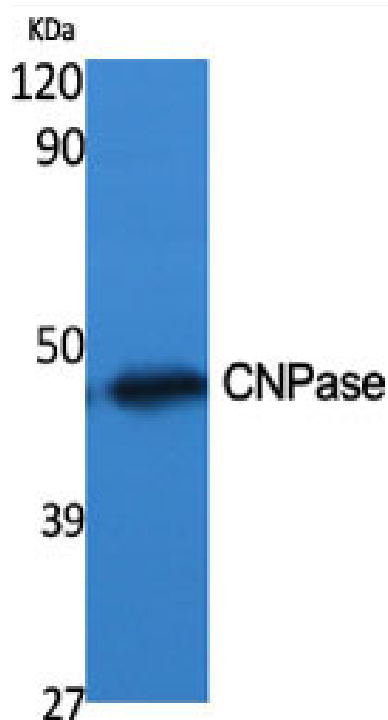
matters needing attention

Avoid repeated freezing and thawing!

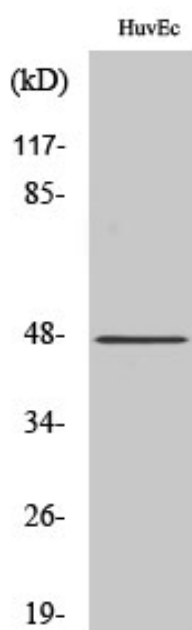
Usage suggestions

This product can be used in immunological reaction related experiments. For more information, please consult technical personnel.

Products Images

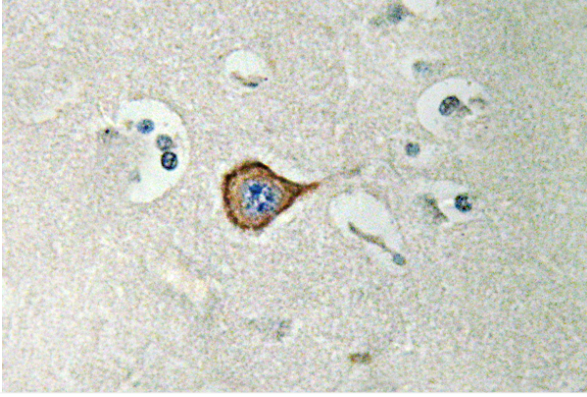


Western Blot analysis of various cells using CNPase Polyclonal Antibody diluted at 1:500

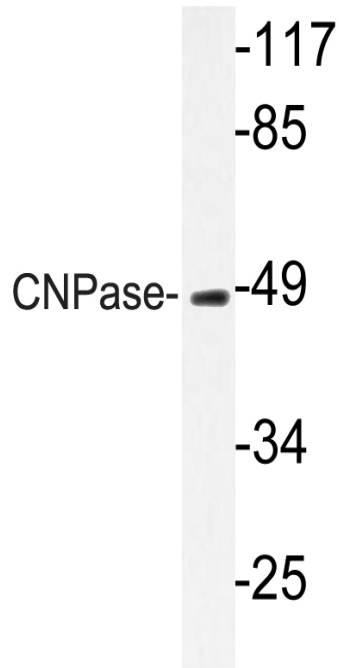


Western Blot analysis of MCF7 cells using CNPase Polyclonal Antibody diluted at 1:500

Nanjing BYabs science technology Co.,Ltd



Immunohistochemistry analysis of CNPase antibody in paraffin-embedded human brain tissue.



Western blot analysis of lysate from HUVEC cells, using CNPase antibody.