



# Cep97 Polyclonal Antibody

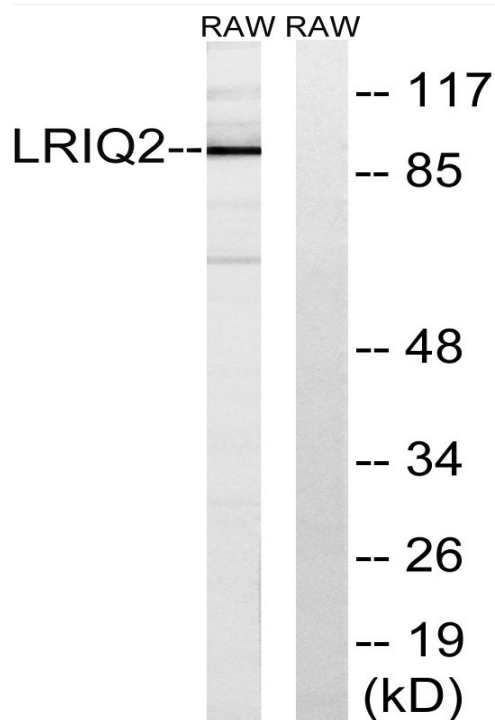
|                           |  |
|---------------------------|--|
| <b>Catalog No</b>         | BYab-03767   |
| <b>Isotype</b>            | IgG  |
| <b>Reactivity</b>         | Human;Mouse  |
| <b>Applications</b>       | WB;IHC;IF;ELISA  |
| <b>Gene Name</b>          | CEP97  |
| <b>Protein Name</b>       | Centrosomal protein of 97 kDa  |
| <b>Immunogen</b>          | The antiserum was produced against synthesized peptide derived from human CEP97. AA range:581-630  |
| <b>Specificity</b>        | Cep97 Polyclonal Antibody detects endogenous levels of Cep97 protein.  |
| <b>Formulation</b>        | Liquid in PBS containing 50% glycerol, 0.5% BSA and 0.02% sodium azide.  |
| <b>Source</b>             | Polyclonal, Rabbit,IgG   |
| <b>Purification</b>       | The antibody was affinity-purified from rabbit antiserum by affinity-chromatography using epitope-specific immunogen.  |
| <b>Dilution</b>           | WB: 1/500 - 1/2000. IHC: 1/100 - 1/300. ELISA: 1/20000.. IF 1:50-200   |
| <b>Concentration</b>      | 1 mg/ml  |
| <b>Purity</b>             | ≥90%   |
| <b>Storage Stability</b>  | -20°C/1 year   |
| <b>Synonyms</b>           | CEP97; LRRIQ2; Centrosomal protein of 97 kDa; Cep97; Leucine-rich repeat and IQ domain-containing protein 2  |
| <b>Observed Band</b>      | 97kD   |
| <b>Cell Pathway</b>       | Cytoplasm, cytoskeleton, microtubule organizing center, centrosome . Cytoplasm, cytoskeleton, microtubule organizing center, centrosome, centriole . Recruited at the distal end of the mother centriole by MPHOSPH9. .  |
| <b>Tissue Specificity</b> | Lung,Skin,Testis,  |
| <b>Function</b>           | function:Collaborates with cep110, being involved in the suppression of a cilia assembly program. Required for correct spindle formation and has a role in cytokinesis. Required for recruitment of cep110 to the centrosome.,PTM:Phosphorylated upon DNA damage, probably by ATM or ATR.,similarity:Contains 1 IQ domain.,similarity:Contains 6 LRR (leucine-rich) repeats.,subunit:Interacts with CALM1 and CEP110., |
| <b>Background</b>         | function:Collaborates with cep110, being involved in the suppression of a cilia assembly program. Required for correct spindle formation and has a role in   |

**Nanjing BYabscience technology Co.,Ltd**

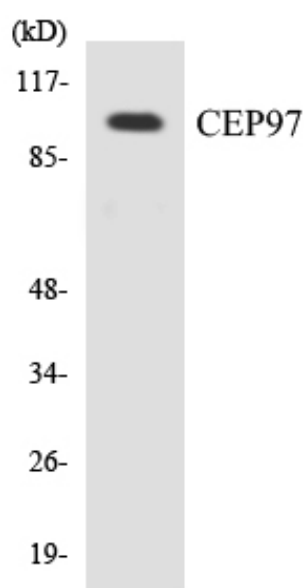




## Products Images



Western blot analysis of lysates from RAW264.7 cells, using CEP97 Antibody. The lane on the right is blocked with the synthesized peptide.



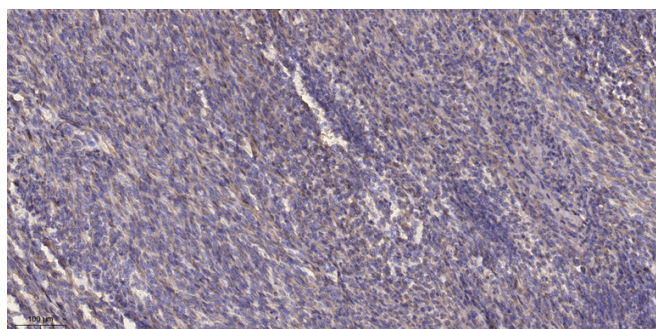
Western blot analysis of the lysates from COLO205 cells using CEP97 antibody.

Nanjing BYabs science technology Co.,Ltd

网址: [www.njbybio.com](http://www.njbybio.com)

官方热线: 025-5229-8998

监督电话: 15950492658



Immunohistochemical analysis of paraffin-embedded human Colon cancer. 1, Antibody was diluted at 1:200(4° overnight). 2, Tris-EDTA,pH9.0 was used for antigen retrieval. 3,Secondary antibody was diluted at 1:200(room temperature, 45min).