



CEP70 Polyclonal Antibody

Catalog No	BYab-03764
Isotype	IgG
Reactivity	Human;Monkey
Applications	WB;IHC;IF;ELISA
Gene Name	CEP70
Protein Name	Centrosomal protein of 70 kDa
Immunogen	The antiserum was produced against synthesized peptide derived from human CEP70. AA range:241-290
Specificity	CEP70 Polyclonal Antibody detects endogenous levels of CEP70 protein.
Formulation	Liquid in PBS containing 50% glycerol, 0.5% BSA and 0.02% sodium azide.
Source	Polyclonal, Rabbit,IgG
Purification	The antibody was affinity-purified from rabbit antiserum by affinity-chromatography using epitope-specific immunogen.
Dilution	WB: 1/500 - 1/2000. IHC: 1/100 - 1/300. ELISA: 1/40000.. IF 1:50-200
Concentration	1 mg/ml
Purity	≥90%
Storage Stability	-20°C/1 year
Synonyms	CEP70; BITE; Centrosomal protein of 70 kDa; Cep70; p10-binding protein
Observed Band	70kD
Cell Pathway	Cytoplasm, cytoskeleton, microtubule organizing center, centrosome . Localized at the center of the radial microtubule array in interphase and at the spindle poles during various stages of mitosis.
Tissue Specificity	Chronic myeloid leukemia cell,Skin,Teratocarcinoma,Testis,
Function	similarity:Contains 1 TPR repeat.,
Background	similarity:Contains 1 TPR repeat.,
matters needing attention	Avoid repeated freezing and thawing!

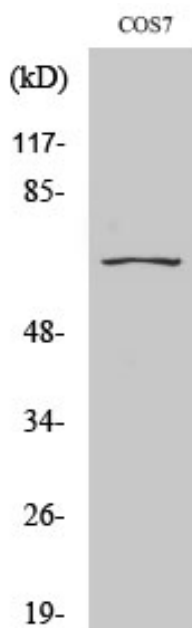
Nanjing BYabscience technology Co.,Ltd



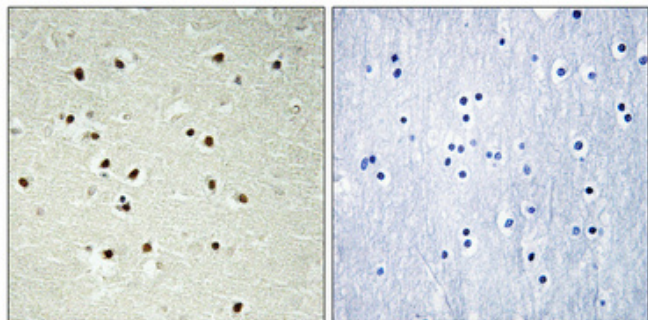
Usage suggestions

This product can be used in immunological reaction related experiments. For more information, please consult technical personnel.

Products Images



Western Blot analysis of various cells using CEP70 Polyclonal Antibody diluted at 1:2000



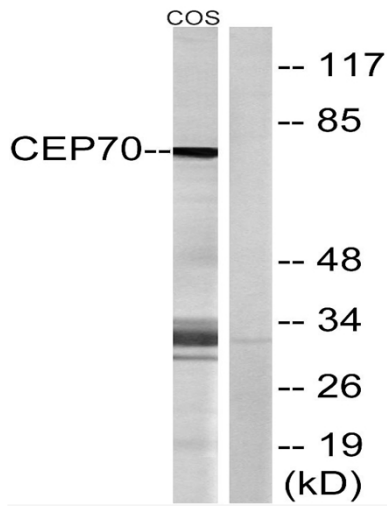
Immunohistochemical analysis of paraffin-embedded Human brain. Antibody was diluted at 1:100(4° overnight). High-pressure and temperature Tris-EDTA,pH8.0 was used for antigen retrieval. Negative contrl (right) obtained from antibody was pre-absorbed by immunogen peptide.

Nanjing BYabscience technology Co.,Ltd

网址: www.njbybio.com

官方热线: 025-5229-8998

监督电话: 15950492658



Western blot analysis of lysates from COS cells, using CEP70 Antibody. The lane on the right is blocked with the synthesized peptide.