



CDKAL1 Polyclonal Antibody

Catalog No	BYab-03755
Isotype	IgG
Reactivity	Human;Rat
Applications	WB;ELISA
Gene Name	CDKAL1
Protein Name	Threonylcarbamoyladenosine tRNA methylthiotransferase
Immunogen	The antiserum was produced against synthesized peptide derived from human CDKAL. AA range:10-59
Specificity	CDKAL1 Polyclonal Antibody detects endogenous levels of CDKAL1 protein.
Formulation	Liquid in PBS containing 50% glycerol, 0.5% BSA and 0.02% sodium azide.
Source	Polyclonal, Rabbit,IgG
Purification	The antibody was affinity-purified from rabbit antiserum by affinity-chromatography using epitope-specific immunogen.
Dilution	Western Blot: 1/500 - 1/2000. ELISA: 1/40000. Not yet tested in other applications.
Concentration	1 mg/ml
Purity	≥90%
Storage Stability	-20°C/1 year
Synonyms	CDKAL1; Threonylcarbamoyladenosine tRNA methylthiotransferase; CDK5 regulatory subunit-associated protein 1-like 1; tRNA-t(6)A37 methylthiotransferase
Observed Band	65kD
Cell Pathway	Endoplasmic reticulum membrane ; Single-pass membrane protein . Is a tail-anchored protein that exploits the TCR40 pathway for insertion into the endoplasmic reticulum. .
Tissue Specificity	Expressed in pancreatic islets.
Function	cofactor: Binds 2 4Fe-4S clusters. One cluster is coordinated with 3 cysteines and an exchangeable S-adenosyl-L-methionine.,similarity: Belongs to the methylthiotransferase family. CDKAL1 subfamily.,similarity: Contains 1 MTTase N-terminal domain.,similarity: Contains 1 TRAM domain.,
Background	The protein encoded by this gene is a member of the methylthiotransferase family. The function of this gene is not known. Genome-wide association studies have linked single nucleotide polymorphisms in an intron of this gene with

Nanjing BYabscience technology Co.,Ltd



susceptibility to type 2 diabetes. [provided by RefSeq, May 2010],

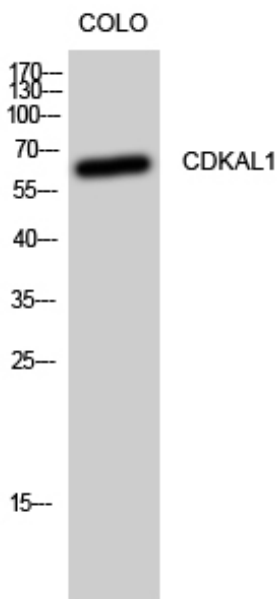
matters needing attention

Avoid repeated freezing and thawing!

Usage suggestions

This product can be used in immunological reaction related experiments. For more information, please consult technical personnel.

Products Images



Western Blot analysis of CoLo cells using CDKAL1 Polyclonal Antibody