



Cdc42EP2 Polyclonal Antibody

Catalog No	BYab-03751
Isotype	IgG
Reactivity	Human;Mouse;Rat
Applications	WB;IHC;IF;ELISA
Gene Name	CDC42EP2
Protein Name	Cdc42 effector protein 2
Immunogen	The antiserum was produced against synthesized peptide derived from human BORG1. AA range:10-59
Specificity	Cdc42EP2 Polyclonal Antibody detects endogenous levels of Cdc42EP2 protein.
Formulation	Liquid in PBS containing 50% glycerol, 0.5% BSA and 0.02% sodium azide.
Source	Polyclonal, Rabbit,IgG
Purification	The antibody was affinity-purified from rabbit antiserum by affinity-chromatography using epitope-specific immunogen.
Dilution	WB: 1/500 - 1/2000. IHC: 1/100 - 1/300. ELISA: 1/40000.. IF 1:50-200
Concentration	1 mg/ml
Purity	≥90%
Storage Stability	-20°C/1 year
Synonyms	CDC42EP2; BORG1; CEP2; Cdc42 effector protein 2; Binder of Rho GTPases 1
Observed Band	28kD
Cell Pathway	Endomembrane system ; Peripheral membrane protein . Cytoplasm, cytoskeleton
Tissue Specificity	Highly expressed in the heart. Weakly expressed in the pancreas and liver.
Function	domain:The CRIB domain mediates interaction with CDC42.,function:Probably involved in the organization of the actin cytoskeleton. May act downstream of CDC42 to induce actin filament assembly leading to cell shape changes. Induces pseudopodia formation in fibroblasts in a CDC42-dependent manner.,similarity:Belongs to the BORG/CEP family.,similarity:Contains 1 CRIB domain.,subunit:Interacts with RHOQ and CDC42 in a GTP-dependent manner, and with SEPT7.,tissue specificity:Highly expressed in the heart. Weakly expressed in the pancreas and liver.,
Background	CDC42, a small Rho GTPase, regulates the formation of F-actin-containing structures through its interaction with the downstream effector proteins. The

Nanjing BYabscience technology Co.,Ltd



protein encoded by this gene is a member of the Borg family of CDC42 effector proteins. Borg family proteins contain a CRIB (Cdc42/Rac interactive-binding) domain. They bind to, and negatively regulate the function of CDC42. Coexpression of this protein with CDC42 suggested a role of this protein in actin filament assembly and cell shape control. [provided by RefSeq, Aug 2011],

matters needing attention

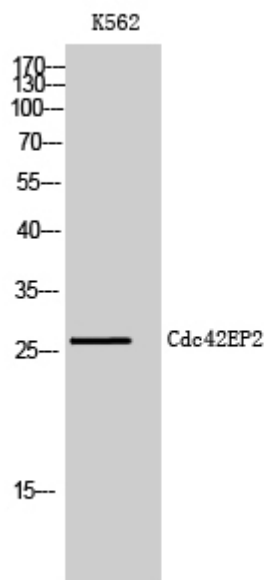
Avoid repeated freezing and thawing!

Usage suggestions

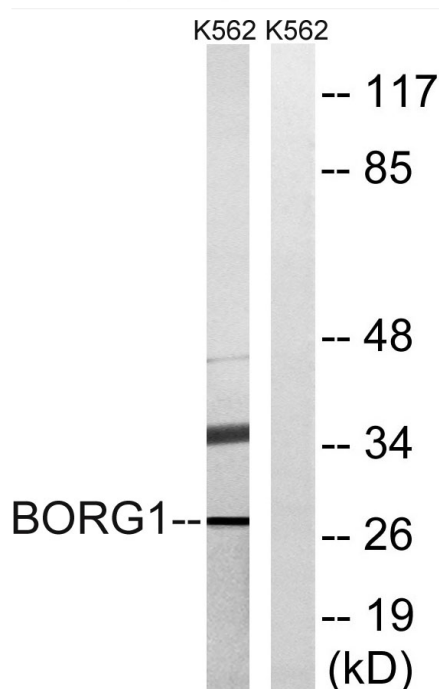
This product can be used in immunological reaction related experiments. For more information, please consult technical personnel.



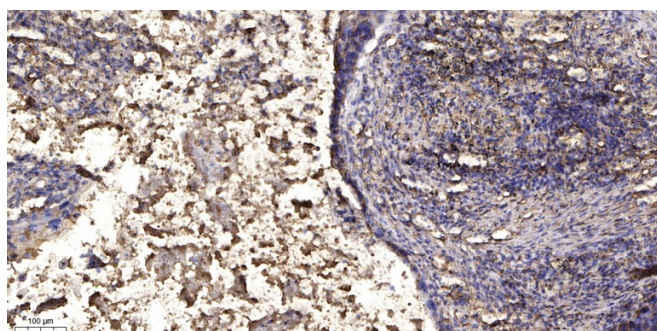
Products Images



Western Blot analysis of K562 cells using Cdc42EP2 Polyclonal Antibody



Western blot analysis of lysates from K562 cells, using BORG1 Antibody. The lane on the right is blocked with the synthesized peptide.



Immunohistochemical analysis of paraffin-embedded human Squamous cell carcinoma of lung. 1, Antibody was diluted at 1:200(4° overnight). 2, Tris-EDTA,pH9.0 was used for antigen retrieval. 3,Secondary antibody was diluted at 1:200(room temperature, 45min).

Nanjing BYabscience technology Co.,Ltd



Nanjing BYabscience technology Co.,Ltd

网址: www.njbybio.com

官方热线: 025-5229-8998

监督电话: 15950492658