



BAI-2 Polyclonal Antibody

Catalog No	BYab-03737
Isotype	IgG
Reactivity	Human;Mouse
Applications	IHC;IF;ELISA
Gene Name	BAI2
Protein Name	Brain-specific angiogenesis inhibitor 2
Immunogen	The antiserum was produced against synthesized peptide derived from human BAI2. AA range:91-140
Specificity	BAI-2 Polyclonal Antibody detects endogenous levels of BAI-2 protein.
Formulation	Liquid in PBS containing 50% glycerol, 0.5% BSA and 0.02% sodium azide.
Source	Polyclonal, Rabbit,IgG
Purification	The antibody was affinity-purified from rabbit antiserum by affinity-chromatography using epitope-specific immunogen.
Dilution	Immunohistochemistry: 1/100 - 1/300. Immunofluorescence: 1/200 - 1/1000. ELISA: 1/10000. Not yet tested in other applications.
Concentration	1 mg/ml
Purity	≥90%
Storage Stability	-20°C/1 year
Synonyms	BAI2; Brain-specific angiogenesis inhibitor 2
Observed Band	
Cell Pathway	Cell membrane ; Multi-pass membrane protein .
Tissue Specificity	Strongly expressed in brain. Also detected in heart, thymus, skeletal muscle, and different cell lines.
Function	function:Might be involved in angiogenesis inhibition.,similarity:Belongs to the G-protein coupled receptor 2 family. LN-TM7 subfamily.,similarity:Contains 1 GPS domain.,similarity:Contains 4 TSP type-1 domains.,subunit:Interacts with GABPB2.,tissue specificity:Strongly expressed in brain. Also detected in heart, thymus, skeletal muscle, and different cell lines.,
Background	This gene encodes a a seven-span transmembrane protein that is thought to be a member of the secretin receptor family. The encoded protein is a brain-specific inhibitor of angiogenesis. The mature peptide may be further cleaved into additional products (PMID:20367554). Alternative splicing results in multiple transcript variants. [provided by RefSeq, Jun 2014],

Nanjing BYabscience technology Co.,Ltd

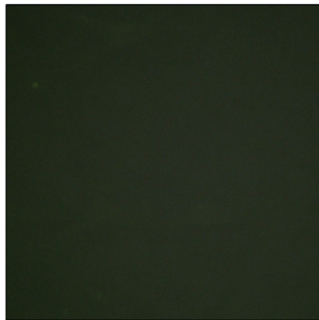
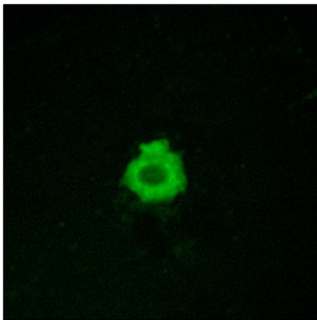
**matters needing attention**

Avoid repeated freezing and thawing!

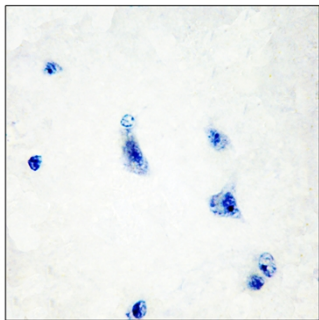
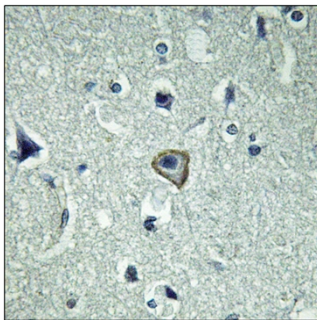
Usage suggestions

This product can be used in immunological reaction related experiments. For more information, please consult technical personnel.

Products Images



Immunofluorescence analysis of HUVEC cells, using BAI2 Antibody. The picture on the right is blocked with the synthesized peptide.



Immunohistochemistry analysis of paraffin-embedded human brain tissue, using BAI2 Antibody. The picture on the right is blocked with the synthesized peptide.

Nanjing BYabscience technology Co.,Ltd

网址: www.njbybio.com

官方热线: 025-5229-8998

监督电话: 15950492658