



Arrestin-C Polyclonal Antibody

Catalog No	BYab-03722
Isotype	IgG
Reactivity	Human;Rat;Mouse;
Applications	WB;IHC;IF;ELISA
Gene Name	ARR3
Protein Name	Arrestin-C
Immunogen	The antiserum was produced against synthesized peptide derived from human ARRC. AA range:339-388
Specificity	Arrestin-C Polyclonal Antibody detects endogenous levels of Arrestin-C protein.
Formulation	Liquid in PBS containing 50% glycerol, 0.5% BSA and 0.02% sodium azide.
Source	Polyclonal, Rabbit,IgG
Purification	The antibody was affinity-purified from rabbit antiserum by affinity-chromatography using epitope-specific immunogen.
Dilution	Western Blot: 1/500 - 1/2000. Immunohistochemistry: 1/100 - 1/300. Immunofluorescence: 1/200 - 1/1000. ELISA: 1/5000. Not yet tested in other applications.
Concentration	1 mg/ml
Purity	≥90%
Storage Stability	-20°C/1 year
Synonyms	ARR3; ARRX; CAR; Arrestin-C; Cone arrestin; C-arrestin; cArr; Retinal cone arrestin-3; X-arrestin
Observed Band	40kD
Cell Pathway	Photoreceptor inner segment . Cell projection, cilium, photoreceptor outer segment .
Tissue Specificity	Inner and outer segments, and the inner plexiform regions of the retina.
Function	function:May play a role in an as yet undefined retina-specific signal transduction. Could binds to photoactivated-phosphorylated red/green opsins.,similarity:Belongs to the arrestin family.,tissue specificity:Inner and outer segments, and the inner plexiform regions of the retina.,
Background	The protein encoded by this gene is a non-visual arrestin which binds to agonist-activated, phosphorylated G protein-coupled receptors. This binding uncouples the receptor from the heterotrimeric G protein, resulting in termination of the G protein-coupled receptor signaling. The encoded protein also is a part of

Nanjing BYabscience technology Co.,Ltd



the centrosome, interacting with gamma-tubulin to help regulate proper centrosome function. [provided by RefSeq, May 2016],

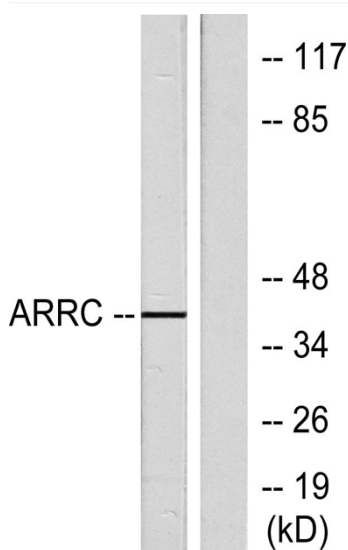
matters needing attention

Avoid repeated freezing and thawing!

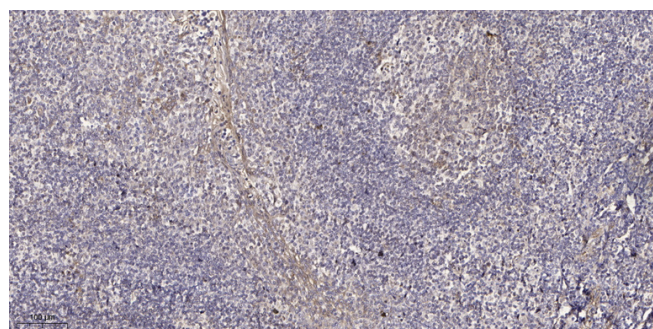
Usage suggestions

This product can be used in immunological reaction related experiments. For more information, please consult technical personnel.

Products Images



Western blot analysis of lysates from LOVO cells, using ARRC Antibody. The lane on the right is blocked with the synthesized peptide.



Immunohistochemical analysis of paraffin-embedded human tonsil. 1, Antibody was diluted at 1:200(4° overnight). 2, Tris-EDTA, pH9.0 was used for antigen retrieval. 3, Secondary antibody was diluted at 1:200(room temperature, 30min).

Nanjing BYabs science technology Co.,Ltd

网址: www.njbybio.com

官方热线: 025-5229-8998

监督电话: 15950492658