



ARMCX3 Polyclonal Antibody

Catalog No	BYab-03716
Isotype	IgG
Reactivity	Human;Mouse;Rat
Applications	WB;IHC;IF;ELISA
Gene Name	ARMCX3
Protein Name	Armadillo repeat-containing X-linked protein 3
Immunogen	The antiserum was produced against synthesized peptide derived from human ARMX3. AA range:291-340
Specificity	ARMCX3 Polyclonal Antibody detects endogenous levels of ARMCX3 protein.
Formulation	Liquid in PBS containing 50% glycerol, 0.5% BSA and 0.02% sodium azide.
Source	Polyclonal, Rabbit,IgG
Purification	The antibody was affinity-purified from rabbit antiserum by affinity-chromatography using epitope-specific immunogen.
Dilution	Western Blot: 1/500 - 1/2000. Immunohistochemistry: 1/100 - 1/300. Immunofluorescence: 1/200 - 1/1000. ELISA: 1/5000. Not yet tested in other applications.
Concentration	1 mg/ml
Purity	≥90%
Storage Stability	-20°C/1 year
Synonyms	ARMCX3; ALEX3; BM-017; Armadillo repeat-containing X-linked protein 3; ARM protein lost in epithelial cancers on chromosome X 3; Protein ALEX3
Observed Band	38kD
Cell Pathway	Mitochondrion outer membrane ; Single-pass membrane protein . Cytoplasm . Nucleus .
Tissue Specificity	Bone marrow,Brain,Epithelium,Kidney,Liver,Retina,Skin,Testis,
Function	similarity:Contains 3 ARM repeats.,
Background	armadillo repeat containing, X-linked 3(ARMCX3) Homo sapiens This gene encodes a member of the ALEX family of proteins which may play a role in tumor suppression. The encoded protein contains a potential N-terminal transmembrane domain and a single Armadillo (arm) repeat. Other proteins containing the arm repeat are involved in development, maintenance of tissue integrity, and tumorigenesis. This gene is closely localized with other family members on the X

Nanjing BYabscience technology Co.,Ltd



chromosome. Three transcript variants encoding the same protein have been identified for this gene. [provided by RefSeq, Jul 2008],

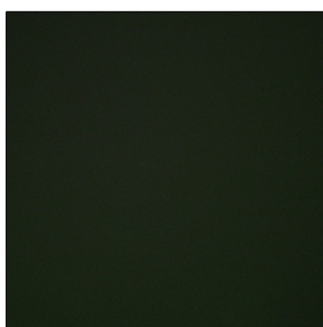
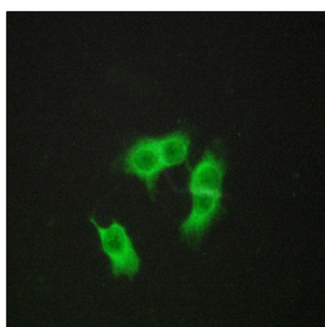
matters needing attention

Avoid repeated freezing and thawing!

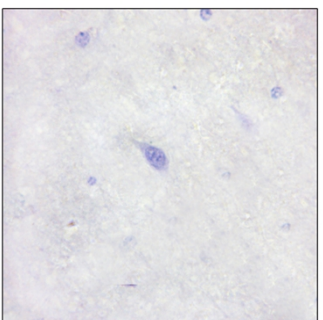
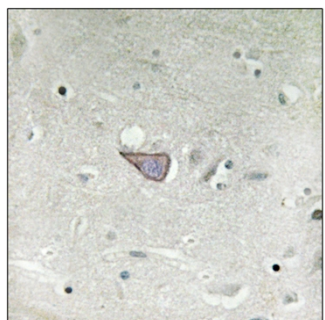
Usage suggestions

This product can be used in immunological reaction related experiments. For more information, please consult technical personnel.

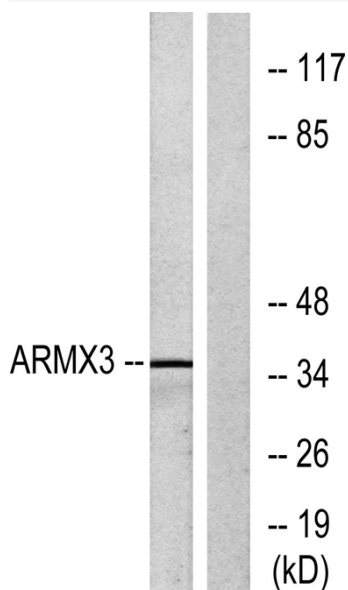
Products Images



Immunofluorescence analysis of HepG2 cells, using ARMX3 Antibody. The picture on the right is blocked with the synthesized peptide.

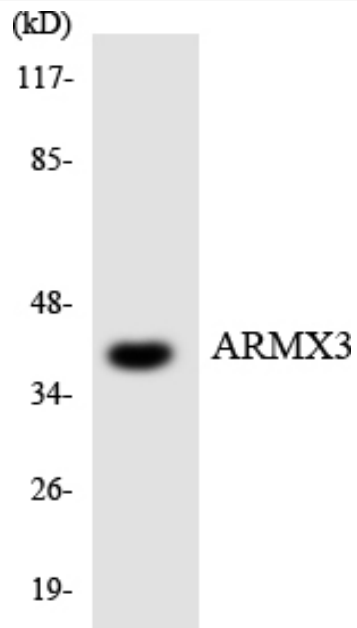


Immunohistochemistry analysis of paraffin-embedded human brain tissue, using ARMX3 Antibody. The picture on the right is blocked with the synthesized peptide.



Western blot analysis of lysates from K562 cells, using ARMX3 Antibody. The lane on the right is blocked with the synthesized peptide.

Nanjing BYabscience technology Co.,Ltd



Western blot analysis of the lysates from COLO205 cells using ARMX3 antibody.