



# AIM2 Polyclonal Antibody

<b>Catalog No</b>	BYab-03685
<b>Isotype</b>	IgG
<b>Reactivity</b>	Human; Mouse; Rat
<b>Applications</b>	WB; IHC; IF; ELISA
<b>Gene Name</b>	AIM2
<b>Protein Name</b>	Interferon-inducible protein AIM2
<b>Immunogen</b>	The antiserum was produced against synthesized peptide derived from human AIM2. AA range: 51-100
<b>Specificity</b>	AIM2 Polyclonal Antibody detects endogenous levels of AIM2 protein.
<b>Formulation</b>	Liquid in PBS containing 50% glycerol, 0.5% BSA and 0.02% sodium azide.
<b>Source</b>	Polyclonal, Rabbit, IgG
<b>Purification</b>	The antibody was affinity-purified from rabbit antiserum by affinity-chromatography using epitope-specific immunogen.
<b>Dilution</b>	Western Blot: 1/500 - 1/2000. Immunohistochemistry: 1/100 - 1/300. Immunofluorescence: 1/200 - 1/1000. ELISA: 1/40000. Not yet tested in other applications.
<b>Concentration</b>	1 mg/ml
<b>Purity</b>	≥90%
<b>Storage Stability</b>	-20°C/1 year
<b>Synonyms</b>	AIM2; Interferon-inducible protein AIM2; Absent in melanoma 2
<b>Observed Band</b>	39kD
<b>Cell Pathway</b>	Nucleus. Cytoplasm. Activated inflammasomes can aggregate in the cytosol as speck-like particles.
<b>Tissue Specificity</b>	Expressed in spleen, small intestine, peripheral blood leukocytes, and testis.
<b>Function</b>	disease: Defects in AIM2 may be a cause of microsatellite unstable colon cancers., function: Tumor suppressor which may act by repressing NF-kappa-B transcriptional activity., induction: By interferon gamma., similarity: Belongs to the HIN-200 family., similarity: Contains 1 DAPIN domain., similarity: Contains 1 HIN-200 domain., subunit: Homodimer., tissue specificity: Expressed in spleen, small intestine, peripheral blood leukocytes, and testis.,
<b>Background</b>	AIM2 is a member of the IFI202X/IFI16 family. It plays a putative role in tumorigenic reversion and may control cell proliferation. Interferon-gamma induces expression of AIM2. [provided by RefSeq, Jul 2008],

**Nanjing BYabscience technology Co., Ltd**



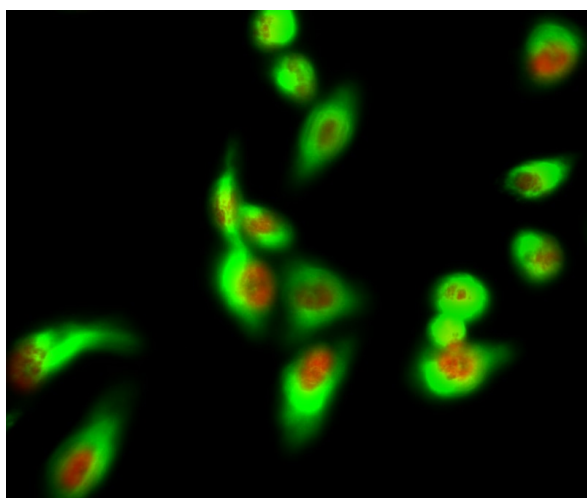
**matters needing attention**

Avoid repeated freezing and thawing!

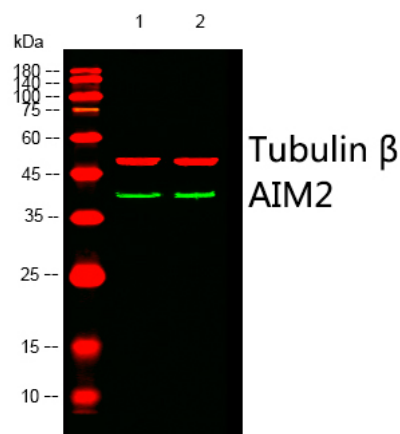
**Usage suggestions**

This product can be used in immunological reaction related experiments. For more information, please consult technical personnel.

**Products Images**



Immunofluorescence analysis of Hela cell. 1, AIM2 Polyclonal Antibody (red) was diluted at 1:200 (4° overnight). HSP70 Monoclonal Antibody (3G10) (green) was diluted at 1:200 (4° overnight). 2, Goat Anti Rabbit Alexa Fluor 594 Catalog: RS3611 was diluted at 1:1000 (room temperature, 50min). Goat Anti Mouse Alexa Fluor 488 Catalog: RS3208 was diluted at 1:1000 (room temperature, 50min).



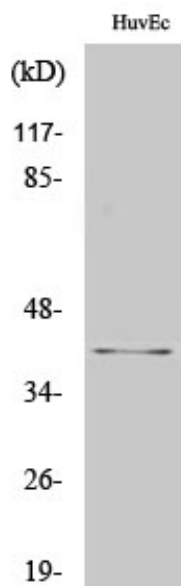
Western blot analysis of lysates from 1) HuvEc, 2) Jurkat cells. (Green) primary antibody was diluted at 1:1000, 4° over night, Dylight 800 secondary antibody (Immunoway: RS23920) was diluted at 1:10000, 37° 1hour. (Red) Tubulin β Monoclonal Antibody (5G3) (Immunoway: YM3030) antibody was diluted at 1:5000 as loading control, 4° over night, Dylight 680 secondary antibody (Immunoway: RS23710) was diluted at 1:10000, 37° 1hour.

**Nanjing BYabscience technology Co., Ltd**

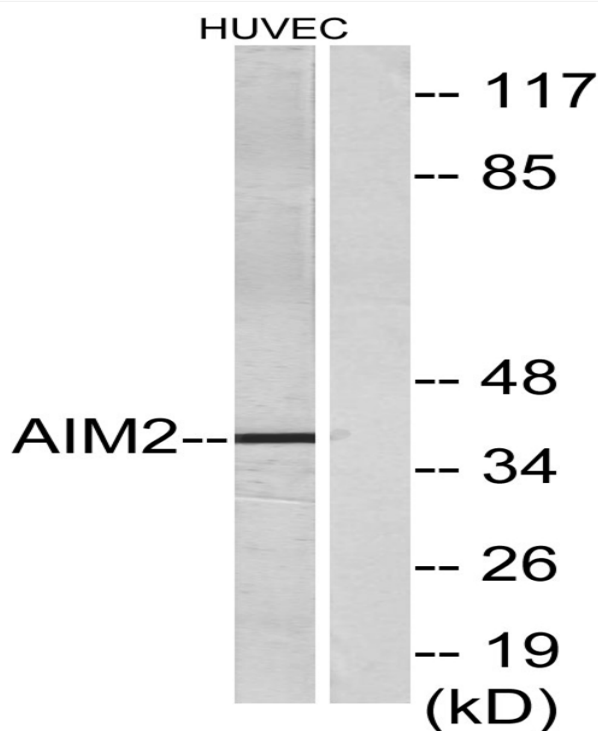
网址: [www.njbybio.com](http://www.njbybio.com)

官方热线: 025-5229-8998

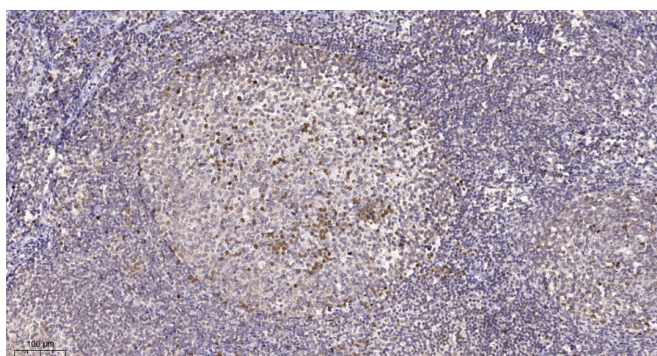
监督电话: 15950492658



Western Blot analysis of HuvEc cells using AIM2  
Polyclonal Antibody cells nucleus extracted by Minute  
TM Cytoplasmic and Nuclear Fractionation kit  
(SC-003, Invent biotech, MN, USA).



Western blot analysis of lysates from HUVEC cells,  
using AIM2 Antibody. The lane on the right is blocked  
with the synthesized peptide.



Immunohistochemical analysis of paraffin-embedded  
human tonsil. 1, Tris-EDTA, pH 9.0 was used for  
antigen retrieval. 2 Antibody was diluted at 1:200 (4°  
overnight). 3, Secondary antibody was diluted at  
1:200 (room temperature, 45 min).