



CPI-17 (phospho Thr38) Polyclonal Antibody

Catalog No	BYab-03512
Isotype	IgG
Reactivity	Human;Mouse;Rat
Applications	WB;IHC;IF;ELISA
Gene Name	PPP1R14A
Protein Name	Protein phosphatase 1 regulatory subunit 14A
Immunogen	The antiserum was produced against synthesized peptide derived from human CPI17 alpha around the phosphorylation site of Thr38. AA range:5-54
Specificity	Phospho-CPI-17 (T38) Polyclonal Antibody detects endogenous levels of CPI-17 protein only when phosphorylated at T38.
Formulation	Liquid in PBS containing 50% glycerol, 0.5% BSA and 0.02% sodium azide.
Source	Polyclonal, Rabbit,IgG
Purification	The antibody was affinity-purified from rabbit antiserum by affinity-chromatography using epitope-specific immunogen.
Dilution	WB: 1/500 - 1/2000. IHC: 1/100 - 1/300. ELISA: 1/20000.. IF 1:50-200
Concentration	1 mg/ml
Purity	≥90%
Storage Stability	-20°C/1 year
Synonyms	PPP1R14A; CPI17; PPP1INL; Protein phosphatase 1 regulatory subunit 14A; 17 kDa PKC-potentiated inhibitory protein of PP1; Protein kinase C-potentiated inhibitor protein of 17 kDa; CPI-17
Observed Band	22kD
Cell Pathway	Cytoplasm .
Tissue Specificity	Isoform 1 is detected in aorta and testis. Isoform 2 is detected in aorta.
Function	function:Inhibitor of PPP1CA. Has over 1000-fold higher inhibitory activity when phosphorylated, creating a molecular switch for regulating the phosphorylation status of PPP1CA substrates and smooth muscle contraction.,similarity:Belongs to the PP1 inhibitor family.,tissue specificity:Isoform 1 is detected in aorta and testis. Isoform 2 is detected in aorta.,
Background	The protein encoded by this gene belongs to the protein phosphatase 1 (PP1) inhibitor family. This protein is an inhibitor of smooth muscle myosin phosphatase, and has higher inhibitory activity when phosphorylated. Inhibition of myosin

Nanjing BYabs science technology Co.,Ltd



phosphatase leads to increased myosin phosphorylation and enhanced smooth muscle contraction. Alternatively spliced transcript variants encoding different isoforms have been noted for this gene. [provided by RefSeq, Sep 2011],

matters needing attention

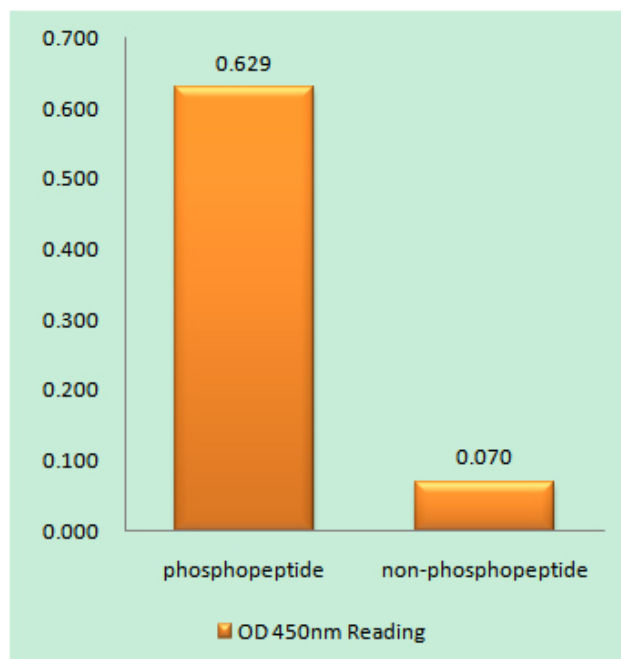
Avoid repeated freezing and thawing!

Usage suggestions

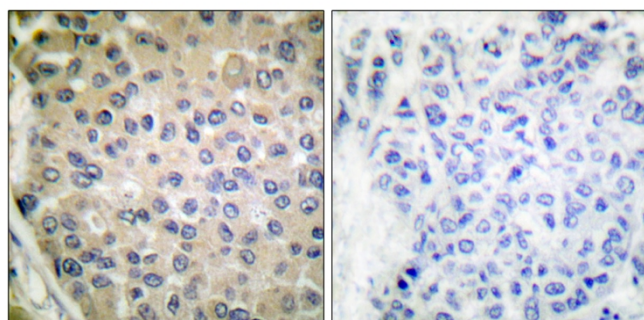
This product can be used in immunological reaction related experiments. For more information, please consult technical personnel.



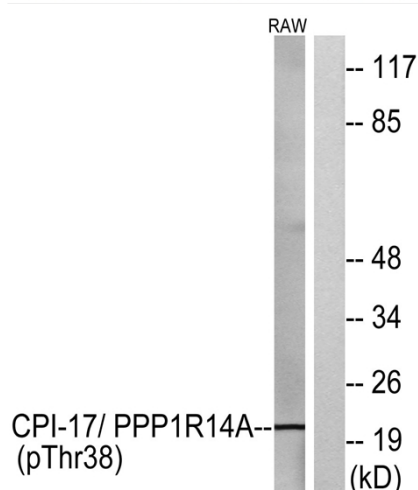
Products Images



Enzyme-Linked Immunosorbent Assay (Phospho-ELISA) for Immunogen Phosphopeptide (Phospho-left) and Non-Phosphopeptide (Phospho-right), using CPI17 alpha (Phospho-Thr38) Antibody



Immunohistochemistry analysis of paraffin-embedded human breast carcinoma, using CPI17 alpha (Phospho-Thr38) Antibody. The picture on the right is blocked with the phospho peptide.



Western blot analysis of lysates from RAW264.7 cells, using CPI17 alpha (Phospho-Thr38) Antibody. The lane on the right is blocked with the phospho peptide.

Nanjing BYabs science technology Co.,Ltd

网址: www.njbybio.com

官方热线: 025-5229-8998

监督电话: 15950492658