



Cleaved-Plasminogen HC A short form (V98) Polyclonal Antibody

Catalog No	BYab-03357
Isotype	IgG
Reactivity	Human;Mouse;Rat
Applications	WB;ELISA
Gene Name	PLG
Protein Name	Plasminogen
Immunogen	The antiserum was produced against synthesized peptide derived from human PLMN. AA range:79-128
Specificity	Cleaved-Plasminogen HC A short form (V98) Polyclonal Antibody detects endogenous levels of fragment of activated Plasminogen HC A short form protein resulting from cleavage adjacent to V98.
Formulation	Liquid in PBS containing 50% glycerol, 0.5% BSA and 0.02% sodium azide.
Source	Polyclonal, Rabbit,IgG
Purification	The antibody was affinity-purified from rabbit antiserum by affinity-chromatography using epitope-specific immunogen.
Dilution	Western Blot: 1/500 - 1/2000. ELISA: 1/10000. Not yet tested in other applications.
Concentration	1 mg/ml
Purity	≥90%
Storage Stability	-20°C/1 year
Synonyms	PLG; Plasminogen
Observed Band	54kD
Cell Pathway	Secreted . Locates to the cell surface where it is proteolytically cleaved to produce the active plasmin. Interaction with HRG tethers it to the cell surface.
Tissue Specificity	Present in plasma and many other extracellular fluids. It is synthesized in the liver.
Function	catalytic activity:Preferential cleavage: Lys- -Xaa > Arg- -Xaa; higher selectivity than trypsin. Converts fibrin into soluble products.,disease:Defects in PLG are a cause of thrombophilia [MIM:188050]; a form of recurrent thrombosis.,disease:Defects in PLG may be associated with ligneous conjunctivitis [MIM:217090]. Ligneous conjunctivitis is an unusual and rare form of chronic conjunctivitis, characterized by chronic tearing and redness of the conjunctivae. Initially, pseudomembranes form on the palpebral surfaces which

Nanjing BYabscience technology Co.,Ltd



then progress to thick nodular masses that replace the normal mucosa. Because the pseudomembranes have a woodlike consistency, the disease is termed "ligneous" conjunctivitis. The disease may be associated with pseudomembranous lesions of other mucous membranes in the mouth, nasopharynx, trachea, and female genital tract.,domain:Kring domains mediate interaction with

Background

The protein encoded by this gene is a secreted blood zymogen that is activated by proteolysis and converted to plasmin and angiostatin. Plasmin dissolves fibrin in blood clots and is an important protease in many other cellular processes while angiostatin inhibits angiogenesis. Defects in this gene are likely a cause of thrombophilia and ligneous conjunctivitis. Two transcript variants encoding different isoforms have been found for this gene.[provided by RefSeq, Dec 2009],

matters needing attention

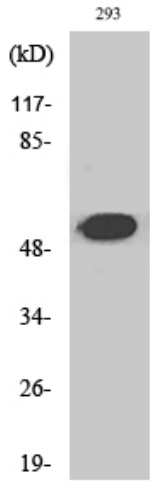
Avoid repeated freezing and thawing!

Usage suggestions

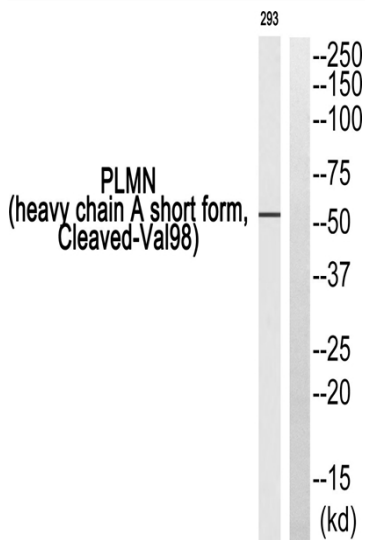
This product can be used in immunological reaction related experiments. For more information, please consult technical personnel.



Products Images



Western Blot analysis of various cells using
Cleaved-Plasminogen HC A short form (V98)
Polyclonal Antibody



Western blot analysis of PLMN (heavy chain A short
form, Cleaved-Val98) Antibody. The lane on the right is
blocked with the PLMN (heavy chain A short form,
Cleaved-Val98) peptide.

Nanjing BYabscience technology Co.,Ltd

网址: www.njbybio.com

官方热线: 025-5229-8998

监督电话: 15950492658