



# MYH-pan Polyclonal Antibody

<b>Catalog No</b>	BYab-03233
<b>Isotype</b>	IgG
<b>Reactivity</b>	Human;Mouse;Rat
<b>Applications</b>	WB;IHC;IF;ELISA
<b>Gene Name</b>	MYH1/MYH2/MYH3/PTPRJ/MYH6/MYH7/MYH8
<b>Protein Name</b>	Myosin-1/Myosin-2/Myosin-3/Receptor-type tyrosine-protein phosphatase eta/Myosin-6/Myosin-7/Myosin-8
<b>Immunogen</b>	The antiserum was produced against synthesized peptide derived from human MYH-pan around the non-acetylation site of Lys1394. AA range:1351-1400
<b>Specificity</b>	MYH-pan Polyclonal Antibody detects endogenous levels of MYH-pan protein only when acetylation at K1394.
<b>Formulation</b>	Liquid in PBS containing 50% glycerol, 0.5% BSA and 0.02% sodium azide.
<b>Source</b>	Polyclonal, Rabbit,IgG
<b>Purification</b>	The antibody was affinity-purified from rabbit antiserum by affinity-chromatography using epitope-specific immunogen.
<b>Dilution</b>	WB: 1/500 - 1/2000. IHC-p: 1/100-1/300. ELISA: 1/20000.. IF 1:50-200
<b>Concentration</b>	1 mg/ml
<b>Purity</b>	≥90%
<b>Storage Stability</b>	-20°C/1 year
<b>Synonyms</b>	MYH1; Myosin-1; Myosin heavy chain 1; Myosin heavy chain 2x; MyHC-2x; Myosin heavy chain IIx/d; MyHC-IIx/d; Myosin heavy chain, skeletal muscle, adult 1; MYH2; MYHSA2; Myosin-2; Myosin heavy chain 2Myosin heavy chain 2; Myosin heavy chain 2a; MyHC-2a; Myosin heavy chain IIa; MyHC-IIa; Myosin heavy chain, skeletal muscle, adult 2; MYH3; Myosin-3; Muscle embryonic myosin heavy chain; Myosin heavy chain 3
<b>Observed Band</b>	225kD
<b>Cell Pathway</b>	Cytoplasm, myofibril. Thick filaments of the myofibrils.
<b>Tissue Specificity</b>	Skeletal muscle,
<b>Function</b>	domain:The rodlike tail sequence is highly repetitive, showing cycles of a 28-residue repeat pattern composed of 4 heptapeptides, characteristic for alpha-helical coiled coils.,function:Muscle contraction.,miscellaneous:Each myosin heavy chain can be split into 1 light meromyosin (LMM) and 1 heavy

**Nanjing BYabscience technology Co.,Ltd**



meromyosin (HMM). It can later be split further into 2 globular subfragments (S1) and 1 rod-shaped subfragment (S2).,similarity:Contains 1 IQ domain.,similarity:Contains 1 myosin head-like domain.,subcellular location:Thick filaments of the myofibrils.,subunit:Muscle myosin is a hexameric protein that consists of 2 heavy chain subunits (MHC), 2 alkali light chain subunits (MLC) and 2 regulatory light chain subunits (MLC-2).,

**Background**

Myosin is a major contractile protein which converts chemical energy into mechanical energy through the hydrolysis of ATP. Myosin is a hexameric protein composed of a pair of myosin heavy chains (MYH) and two pairs of nonidentical light chains. Myosin heavy chains are encoded by a multigene family. In mammals at least 10 different myosin heavy chain (MYH) isoforms have been described from striated, smooth, and nonmuscle cells. These isoforms show expression that is spatially and temporally regulated during development. [provided by RefSeq, Jul 2008],

**matters needing attention**

Avoid repeated freezing and thawing!

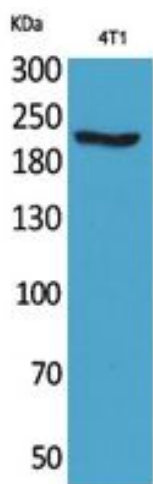
**Usage suggestions**

This product can be used in immunological reaction related experiments. For more information, please consult technical personnel.

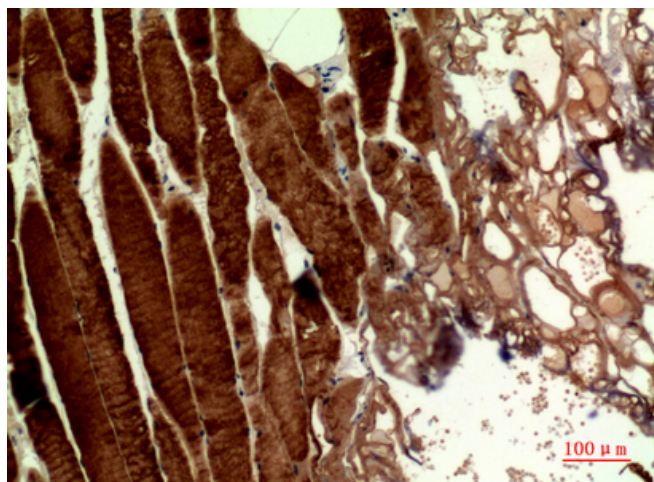
Nanjing BYabscience technology Co.,Ltd



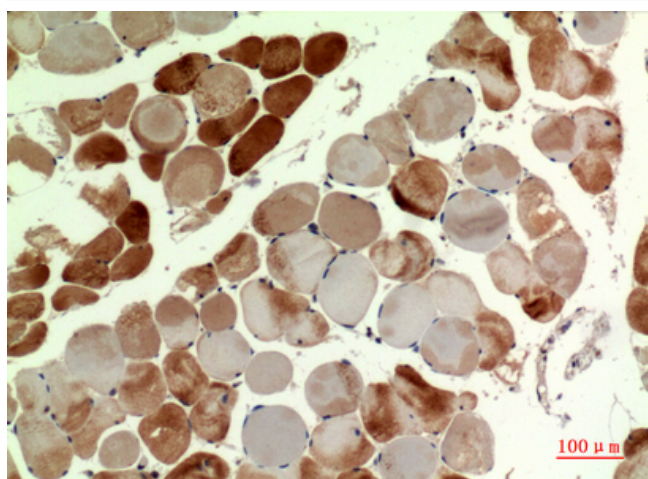
## Products Images



Western Blot analysis of 4T1 cells using MYH-pan Polyclonal Antibody. Secondary antibody(catalog#:RS0002) was diluted at 1:20000



Immunohistochemical analysis of paraffin-embedded human-muscle, antibody was diluted at 1:100



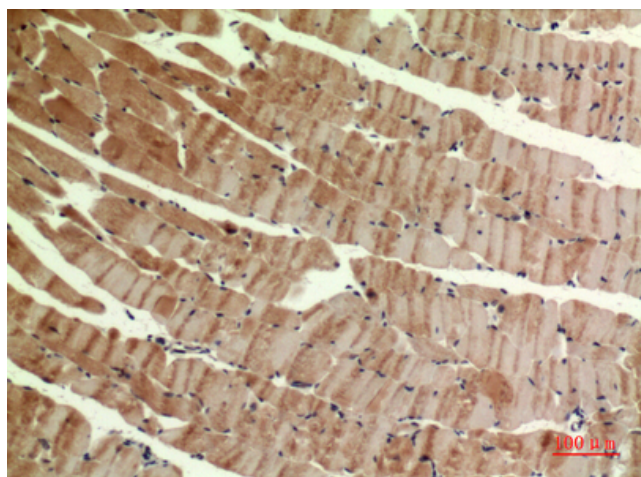
Immunohistochemical analysis of paraffin-embedded human-muscle, antibody was diluted at 1:100

**Nanjing BYabs science technology Co.,Ltd**

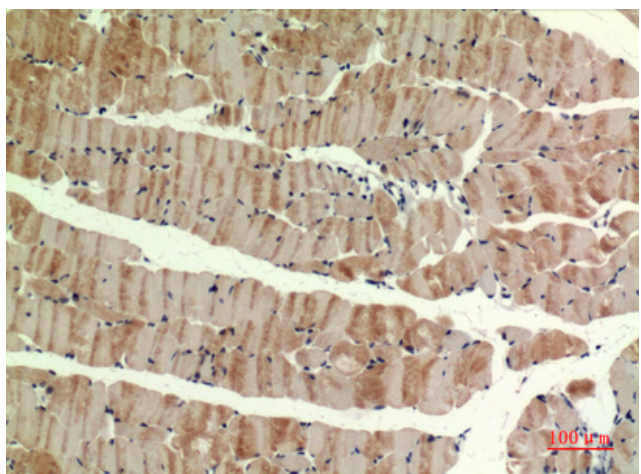
网址: [www.njbybio.com](http://www.njbybio.com)

官方热线: 025-5229-8998

监督电话: 15950492658



Immunohistochemical analysis of paraffin-embedded mouse-muscle, antibody was diluted at 1:100



Immunohistochemical analysis of paraffin-embedded mouse-muscle, antibody was diluted at 1:100