



S-100A7L2 Polyclonal Antibody

Catalog No	BYab-03182
Isotype	IgG
Reactivity	Human;Rat;Mouse;
Applications	WB;ELISA
Gene Name	S100A7L2
Protein Name	Protein S100-A7-like 2
Immunogen	The antiserum was produced against synthesized peptide derived from human S100A7L2. AA range:38-87
Specificity	S-100A7L2 Polyclonal Antibody detects endogenous levels of S-100A7L2 protein.
Formulation	Liquid in PBS containing 50% glycerol, 0.5% BSA and 0.02% sodium azide.
Source	Polyclonal, Rabbit,IgG
Purification	The antibody was affinity-purified from rabbit antiserum by affinity-chromatography using epitope-specific immunogen.
Dilution	Western Blot: 1/500 - 1/2000. ELISA: 1/10000. Not yet tested in other applications.
Concentration	1 mg/ml
Purity	≥90%
Storage Stability	-20°C/1 year
Synonyms	S100A7L2; S100A7B; Protein S100-A7-like 2; S100 calcium-binding protein A7-like 2
Observed Band	11kD
Cell Pathway	
Tissue Specificity	
Function	similarity:Belongs to the S-100 family.,similarity:Contains 2 EF-hand domains.,
Background	similarity:Belongs to the S-100 family.,similarity:Contains 2 EF-hand domains.,
matters needing attention	Avoid repeated freezing and thawing!

Nanjing BYabscience technology Co.,Ltd

网址: www.njbybio.com

官方热线: 025-5229-8998

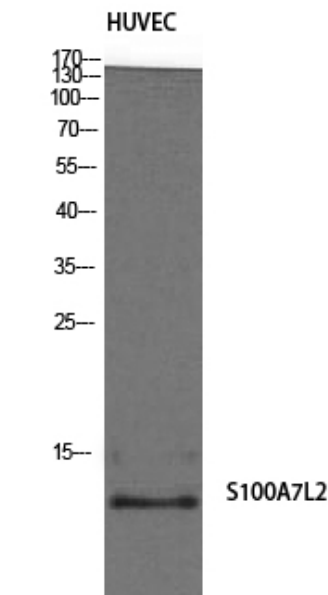
监督电话: 15950492658



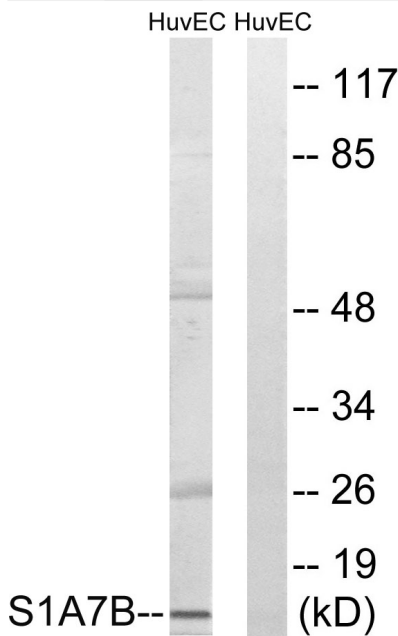
Usage suggestions

This product can be used in immunological reaction related experiments. For more information, please consult technical personnel.

Products Images



Western Blot analysis of HuvEc cells using S-100A7L2 Polyclonal Antibody



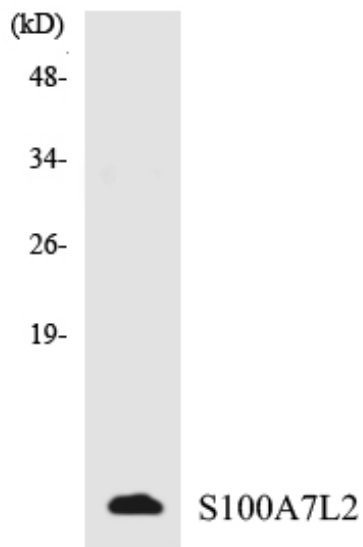
Western blot analysis of lysates from HUVEC cells, using S100A7L2 Antibody. The lane on the right is blocked with the synthesized peptide.

Nanjing BYabscience technology Co.,Ltd

网址: www.njbybio.com

官方热线: 025-5229-8998

监督电话: 15950492658



Western blot analysis of the lysates from HepG2 cells using S100A7L2 antibody.