



POTE-14/22 Polyclonal Antibody

Catalog No	BYab-03171
Isotype	IgG
Reactivity	Human;Rat;Mouse;
Applications	WB;IHC;IF;ELISA
Gene Name	POTEG/POTEH
Protein Name	POTE ankyrin domain family member G/H
Immunogen	The antiserum was produced against synthesized peptide derived from human A26C2/3. AA range:178-227
Specificity	POTE-14/22 Polyclonal Antibody detects endogenous levels of POTE-14/22 protein.
Formulation	Liquid in PBS containing 50% glycerol, 0.5% BSA and 0.02% sodium azide.
Source	Polyclonal, Rabbit,IgG
Purification	The antibody was affinity-purified from rabbit antiserum by affinity-chromatography using epitope-specific immunogen.
Dilution	WB: 1/500 - 1/2000. IHC: 1/100 - 1/300. ELISA: 1/40000.. IF 1:50-200
Concentration	1 mg/ml
Purity	≥90%
Storage Stability	-20°C/1 year
Synonyms	POTEH; A26C3; ACTBL1; POTE22; POTE ankyrin domain family member H; ANKRD26-like family C member 3; Prostate; ovary, testis-expressed protein on chromosome 22; POTE-22; POTEG; A26C2; POTE14; POTE ankyrin domain family member G; ANKRD26-like
Observed Band	61kD
Cell Pathway	integral component of membrane,
Tissue Specificity	Prostate,
Function	similarity:Belongs to the POTE family.,similarity:Contains 7 ANK repeats.,
Background	similarity:Belongs to the POTE family.,similarity:Contains 7 ANK repeats.,

Nanjing BYabscience technology Co.,Ltd

网址: www.njbybio.com

官方热线: 025-5229-8998

监督电话: 15950492658



matters needing attention

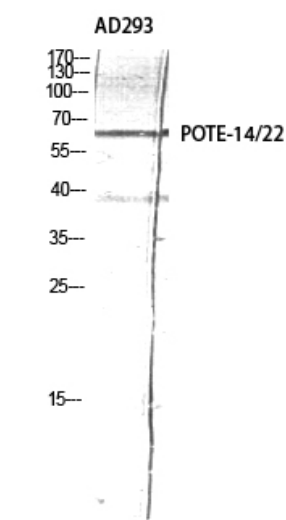
Avoid repeated freezing and thawing!

Usage suggestions

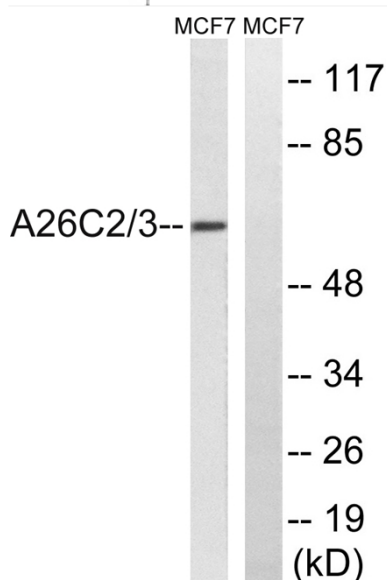
This product can be used in immunological reaction related experiments. For more information, please consult technical personnel.



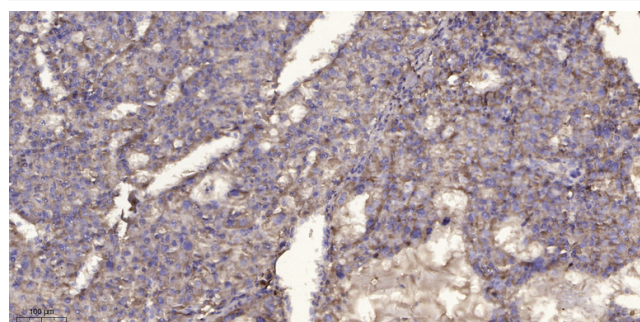
Products Images



Western Blot analysis of AD293 using POTE-14/22 Polyclonal Antibody diluted at 1:2000



Western blot analysis of lysates from MCF-7 cells, using A26C2/3 Antibody. The lane on the right is blocked with the synthesized peptide.



Immunohistochemical analysis of paraffin-embedded human liver cancer. 1, Antibody was diluted at 1:200(4° overnight). 2, Tris-EDTA, pH9.0 was used for antigen retrieval. 3, Secondary antibody was diluted at 1:200(room temperature, 45min).

Nanjing BYabs science technology Co.,Ltd

网址: www.njbybio.com

官方热线: 025-5229-8998

监督电话: 15950492658