



GCP6 Polyclonal Antibody

Catalog No	BYab-03139
Isotype	IgG
Reactivity	Human;Rat;Mouse;
Applications	WB;IHC;IF;ELISA
Gene Name	TUBGCP6
Protein Name	Gamma-tubulin complex component 6
Immunogen	The antiserum was produced against synthesized peptide derived from human TUBGCP6. AA range:741-790
Specificity	GCP6 Polyclonal Antibody detects endogenous levels of GCP6 protein.
Formulation	Liquid in PBS containing 50% glycerol, 0.5% BSA and 0.02% sodium azide.
Source	Polyclonal, Rabbit,IgG
Purification	The antibody was affinity-purified from rabbit antiserum by affinity-chromatography using epitope-specific immunogen.
Dilution	WB: 1/500 - 1/2000. IHC: 1/100 - 1/300. ELISA: 1/20000.. IF 1:50-200
Concentration	1 mg/ml
Purity	≥90%
Storage Stability	-20°C/1 year
Synonyms	TUBGCP6; GCP6; KIAA1669; Gamma-tubulin complex component 6; GCP-6
Observed Band	200kD
Cell Pathway	Cytoplasm, cytoskeleton, microtubule organizing center, centrosome .
Tissue Specificity	Brain,Epithelium,Kidney,PCR rescued clones,
Function	function:Gamma-tubulin complex is necessary for microtubule nucleation at the centrosome.,sequence caution:Intron retention.,similarity:Belongs to the GCP family.,subunit:Gamma-tubulin complex is composed of gamma-tubulin, GCP2, GCP3, GCP4, GCP5 and GCP6.,
Background	The protein encoded by this gene is part of a large multisubunit complex required for microtubule nucleation at the centrosome. [provided by RefSeq, Jul 2008],
matters needing attention	Avoid repeated freezing and thawing!

Nanjing BYabscience technology Co.,Ltd

网址: www.njbybio.com

官方热线: 025-5229-8998

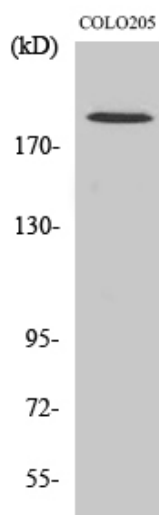
监督电话: 15950492658



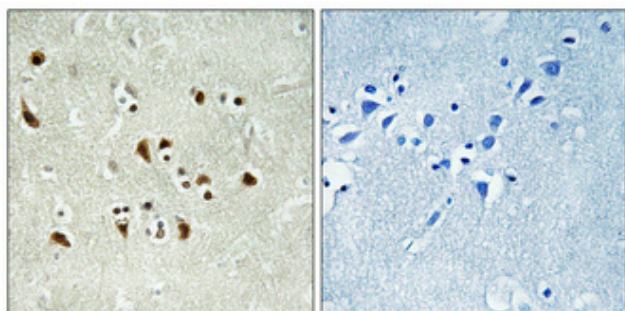
Usage suggestions

This product can be used in immunological reaction related experiments. For more information, please consult technical personnel.

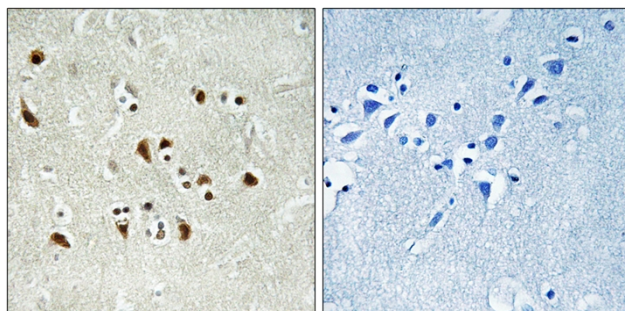
Products Images



Western Blot analysis of various cells using GCP6 Polyclonal Antibody diluted at 1:1000



Immunohistochemical analysis of paraffin-embedded Human brain. Antibody was diluted at 1:100 (4° overnight). High-pressure and temperature Tris-EDTA, pH 8.0 was used for antigen retrieval. Negative control (right) obtained from antibody was pre-absorbed by immunogen peptide.



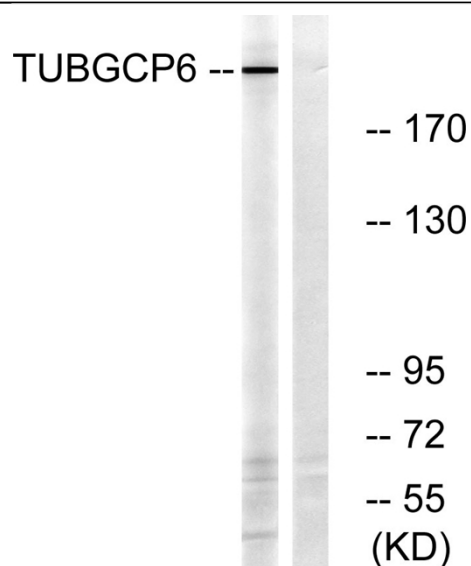
Immunohistochemistry analysis of paraffin-embedded human brain tissue, using TUBGCP6 Antibody. The picture on the right is blocked with the synthesized peptide.

Nanjing BYabs science technology Co., Ltd

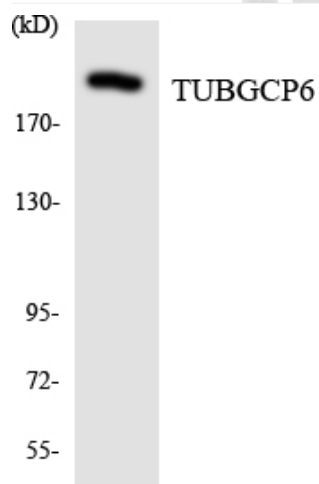
网址: www.njbybio.com

官方热线: 025-5229-8998

监督电话: 15950492658



Western blot analysis of lysates from COLO cells, using TUBGCP6 Antibody. The lane on the right is blocked with the synthesized peptide.



Western blot analysis of the lysates from HeLa cells using TUBGCP6 antibody.