



Cytokeratin 13 Polyclonal Antibody

Catalog No	BYab-03109
Isotype	IgG
Reactivity	Human;Mouse;Rat
Applications	WB;IHC;IF;ELISA
Gene Name	KRT13
Protein Name	Keratin type I cytoskeletal 13
Immunogen	The antiserum was produced against synthesized peptide derived from human Cytokeratin 13. AA range:233-282
Specificity	Cytokeratin 13 Polyclonal Antibody detects endogenous levels of Cytokeratin 13 protein.
Formulation	Liquid in PBS containing 50% glycerol, 0.5% BSA and 0.02% sodium azide.
Source	Polyclonal, Rabbit,IgG
Purification	The antibody was affinity-purified from rabbit antiserum by affinity-chromatography using epitope-specific immunogen.
Dilution	WB: 1/500 - 1/2000. IHC: 1/100 - 1/300. ELISA: 1/5000.. IF 1:50-200
Concentration	1 mg/ml
Purity	≥90%
Storage Stability	-20°C/1 year
Synonyms	KRT13; Keratin; type I cytoskeletal 13; Cytokeratin-13; CK-13; Keratin-13; K13
Observed Band	52kD
Cell Pathway	nucleus,intermediate filament,keratin filament,intermediate filament cytoskeleton,extracellular exosome,
Tissue Specificity	Expressed in some epidermal sweat gland ducts (at protein level) and in exocervix, esophagus and placenta.
Function	disease:Defects in KRT13 are a cause of white sponge nevus of cannon (WSN) [MIM:193900]. WSN is a rare autosomal dominant disorder which predominantly affects non-cornified stratified squamous epithelia. Clinically, it is characterized by the presence of soft, white, and spongy plaques in the oral mucosa. The characteristic histopathologic features are epithelial thickening, parakeratosis, and vacuolization of the suprabasal layer of oral epithelial keratinocytes. Less frequently the mucous membranes of the nose, esophagus, genitalia and rectum are involved.,miscellaneous:There are two types of cytoskeletal and microfibrillar keratin: I (acidic; 40-55 kDa) and II (neutral to basic; 56-70 kDa).,online information:Keratin-13 entry,PTM:O-glycosylated; glycans consist of single

Nanjing BYabscience technology Co.,Ltd



N-acetylglucosamine residues.,similarity:Belongs to the intermediate filament family.,subunit:Heterotetramer of two

Background

The protein encoded by this gene is a member of the keratin gene family. The keratins are intermediate filament proteins responsible for the structural integrity of epithelial cells and are subdivided into cytokeratins and hair keratins. Most of the type I cytokeratins consist of acidic proteins which are arranged in pairs of heterotypic keratin chains. This type I cytokeratin is paired with keratin 4 and expressed in the suprabasal layers of non-cornified stratified epithelia. Mutations in this gene and keratin 4 have been associated with the autosomal dominant disorder White Sponge Nevus. The type I cytokeratins are clustered in a region of chromosome 17q21.2. Alternative splicing of this gene results in multiple transcript variants; however, not all variants have been described. [provided by RefSeq, Jul 2008],

matters needing attention

Avoid repeated freezing and thawing!

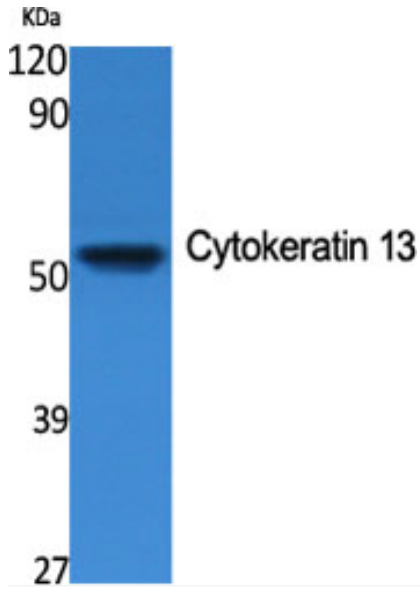
Usage suggestions

This product can be used in immunological reaction related experiments. For more information, please consult technical personnel.

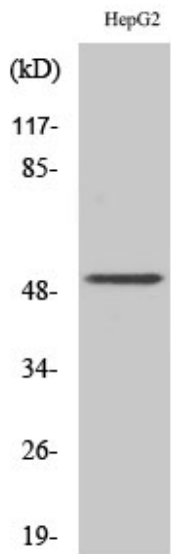
Nanjing BYabs science technology Co.,Ltd



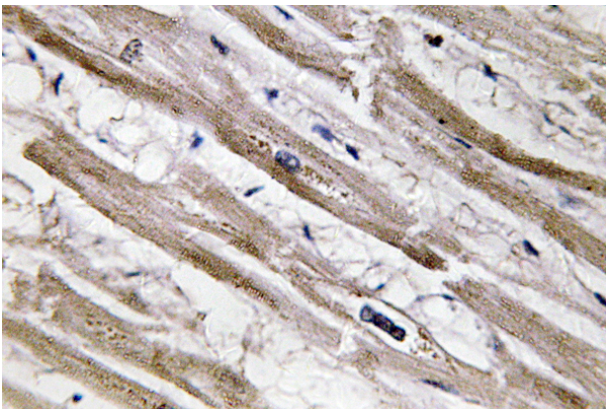
Products Images



Western Blot analysis of various cells using Cytokeratin 13 Polyclonal Antibody



Western Blot analysis of HepG2 cells using Cytokeratin 13 Polyclonal Antibody



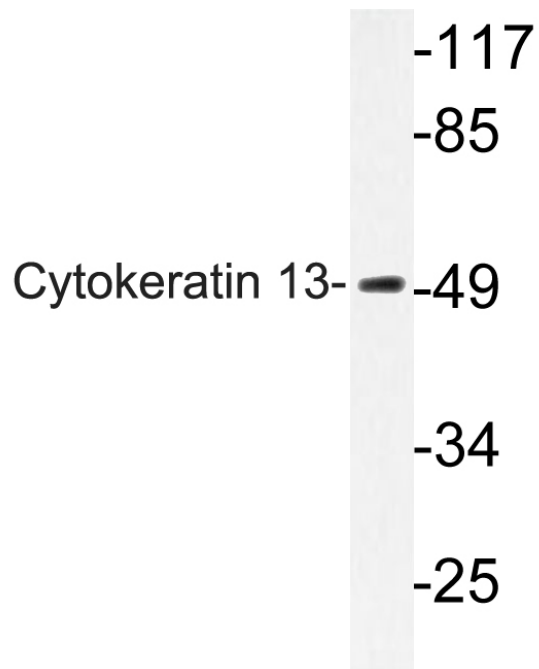
Immunohistochemistry analysis of Cytokeratin 13 antibody in paraffin-embedded human heart tissue.

Nanjing BYabs science technology Co.,Ltd

网址: www.njbybio.com

官方热线: 025-5229-8998

监督电话: 15950492658



Western blot analysis of lysate from HepG2 cells, using Cytokeratin 13 antibody.