



CLIP-170 Polyclonal Antibody

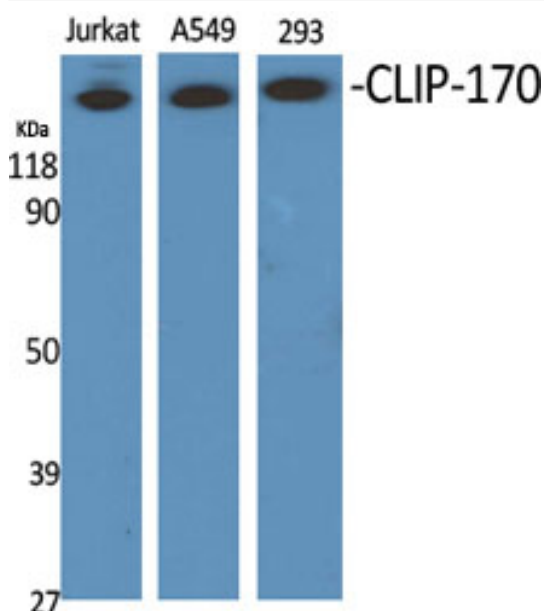
Catalog No	BYab-03102
Isotype	IgG
Reactivity	Human;Mouse;Rat
Applications	WB;ELISA
Gene Name	CLIP1
Protein Name	CAP-Gly domain-containing linker protein 1
Immunogen	The antiserum was produced against synthesized peptide derived from human CLIP1. AA range:1291-1340
Specificity	CLIP-170 Polyclonal Antibody detects endogenous levels of CLIP-170 protein.
Formulation	Liquid in PBS containing 50% glycerol, 0.5% BSA and 0.02% sodium azide.
Source	Polyclonal, Rabbit,IgG
Purification	The antibody was affinity-purified from rabbit antiserum by affinity-chromatography using epitope-specific immunogen.
Dilution	Western Blot: 1/500 - 1/2000. ELISA: 1/20000. Not yet tested in other applications.
Concentration	1 mg/ml
Purity	≥90%
Storage Stability	-20°C/1 year
Synonyms	CLIP1; CYLN1; RSN; CAP-Gly domain-containing linker protein 1; Cytoplasmic linker protein 1; Cytoplasmic linker protein 170 alpha-2; CLIP-170; Reed-Sternberg intermediate filament-associated protein; Restin
Observed Band	161kD
Cell Pathway	Cytoplasm . Cytoplasm, cytoskeleton . Cytoplasmic vesicle membrane ; Peripheral membrane protein; Cytoplasmic side. Cell projection, ruffle . Localizes to microtubule plus ends (PubMed:21646404, PubMed:17889670). Localizes preferentially to the ends of tyrosinated microtubules (By similarity). Accumulates in plasma membrane regions with ruffling and protrusions. Associates with the membranes of intermediate macropinocytic vesicles (PubMed:12433698). .
Tissue Specificity	Detected in dendritic cells (at protein level). Highly expressed in the Reed-Sternberg cells of Hodgkin disease.
Function	function:Seems to be a intermediate filament associated protein that links endocytic vesicles to microtubules.,similarity:Contains 2 CAP-Gly domains.,subcellular location:Associated with the cytoskeleton.,tissue specificity:Highly expressed in the Reed-Sternberg cells of Hodgkin's disease.,

Nanjing BYabscience technology Co.,Ltd

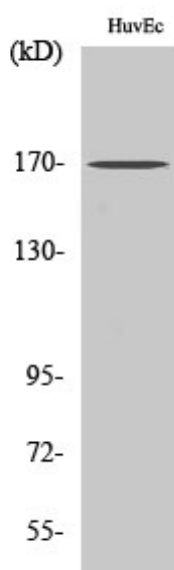


Background	The protein encoded by this gene links endocytic vesicles to microtubules. This gene is highly expressed in Reed-Sternberg cells of Hodgkin disease. Several transcript variants encoding different isoforms have been found for this gene. [provided by RefSeq, Oct 2011],
matters needing attention	Avoid repeated freezing and thawing!
Usage suggestions	This product can be used in immunological reaction related experiments. For more information, please consult technical personnel.

Products Images



Western Blot analysis of various cells using CLIP-170 Polyclonal Antibody



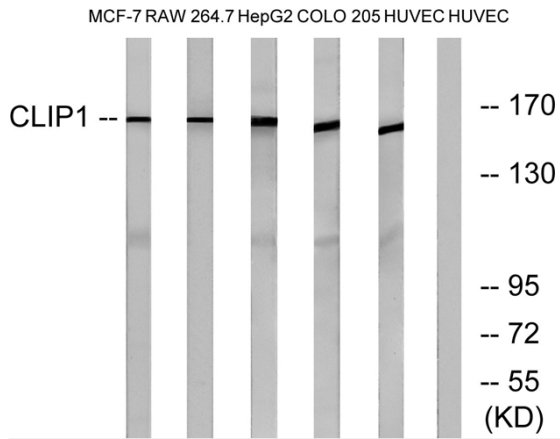
Western Blot analysis of RAW264.7 cells using CLIP-170 Polyclonal Antibody

Nanjing BYabs science technology Co.,Ltd

网址: www.njbybio.com

官方热线: 025-5229-8998

监督电话: 15950492658



Western blot analysis of lysates from HUVEC, COLO, MCF-7, HepG2, and RAW264.7 cells, using CLIP1 Antibody. The lane on the right is blocked with the synthesized peptide.