



# ARALAR Polyclonal Antibody

<b>Catalog No</b>	BYab-03086
<b>Isotype</b>	IgG
<b>Reactivity</b>	Human;Rat;Mouse;
<b>Applications</b>	WB;IHC;IF;ELISA
<b>Gene Name</b>	SLC25A12
<b>Protein Name</b>	Calcium-binding mitochondrial carrier protein Aralar1
<b>Immunogen</b>	The antiserum was produced against synthesized peptide derived from human CMC1. AA range:391-440
<b>Specificity</b>	ARALAR Polyclonal Antibody detects endogenous levels of ARALAR protein.
<b>Formulation</b>	Liquid in PBS containing 50% glycerol, 0.5% BSA and 0.02% sodium azide.
<b>Source</b>	Polyclonal, Rabbit,IgG
<b>Purification</b>	The antibody was affinity-purified from rabbit antiserum by affinity-chromatography using epitope-specific immunogen.
<b>Dilution</b>	WB: 1/500 - 1/2000. IHC: 1/100 - 1/300. ELISA: 1/20000.. IF 1:50-200
<b>Concentration</b>	1 mg/ml
<b>Purity</b>	≥90%
<b>Storage Stability</b>	-20°C/1 year
<b>Synonyms</b>	SLC25A12; ARALAR1; Calcium-binding mitochondrial carrier protein Aralar1; Mitochondrial aspartate glutamate carrier 1; Solute carrier family 25 member 12
<b>Observed Band</b>	75kD
<b>Cell Pathway</b>	Mitochondrion inner membrane ; Multi-pass membrane protein .
<b>Tissue Specificity</b>	Expressed predominantly in the heart and skeletal muscle, weakly in brain and kidney.
<b>Function</b>	function:Calcium-dependent mitochondrial aspartate and glutamate carrier. May have a function in the urea cycle.,miscellaneous:Binds calcium.,similarity:Belongs to the mitochondrial carrier family.,similarity:Contains 3 Solcar repeats.,similarity:Contains 4 EF-hand domains.,tissue specificity:High levels in heart and skeletal muscle, low in brain and very low in kidney.,
<b>Background</b>	This gene encodes a calcium-binding mitochondrial carrier protein. The encoded protein localizes to the mitochondria and is involved in the exchange of aspartate for glutamate across the inner mitochondrial membrane. Polymorphisms in this gene may be associated with autism, and mutations in this gene may also be a

**Nanjing BYabscience technology Co.,Ltd**



cause of global cerebral hypomyelination. Alternatively spliced transcript variants have been observed for this gene. [provided by RefSeq, Apr 2012],

**matters needing attention**

Avoid repeated freezing and thawing!

**Usage suggestions**

This product can be used in immunological reaction related experiments. For more information, please consult technical personnel.

Nanjing BYabscience technology Co.,Ltd

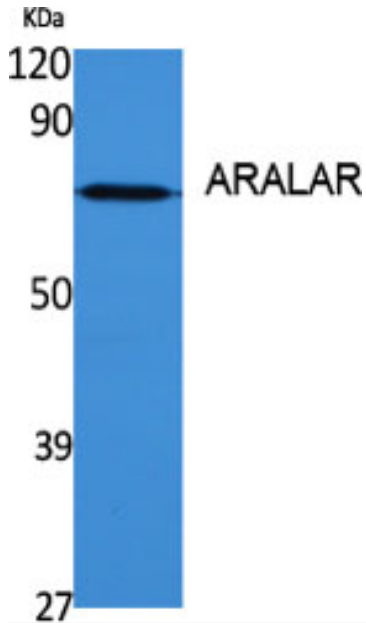
网址: [www.njbybio.com](http://www.njbybio.com)

官方热线: 025-5229-8998

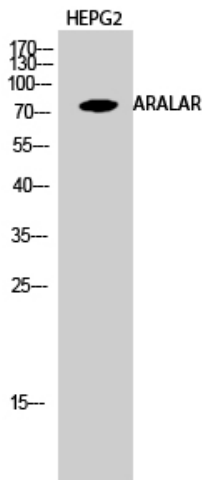
监督电话: 15950492658



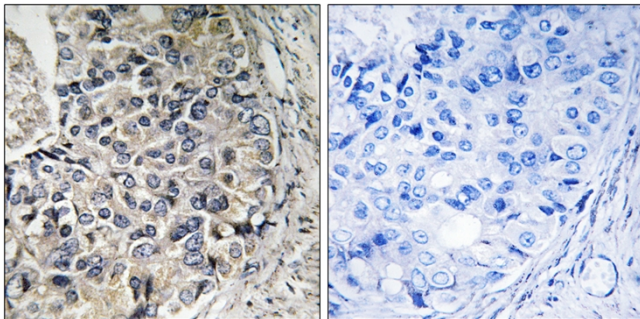
## Products Images



Western Blot analysis of various cells using ARALAR Polyclonal Antibody diluted at 1:1000



Western Blot analysis of HEPG2 cells using ARALAR Polyclonal Antibody diluted at 1:1000



Immunohistochemistry analysis of paraffin-embedded human prostate carcinoma tissue, using CMC1 Antibody. The picture on the right is blocked with the synthesized peptide.

**Nanjing BYabs science technology Co.,Ltd**

网址: [www.njbybio.com](http://www.njbybio.com)

官方热线: 025-5229-8998

监督电话: 15950492658