



Aldolase C Polyclonal Antibody

Catalog No	BYab-02860
Isotype	IgG
Reactivity	Human;Mouse;Rat
Applications	WB;IHC;IF;ELISA
Gene Name	ALDOC
Protein Name	Fructose-bisphosphate aldolase C
Immunogen	The antiserum was produced against synthesized peptide derived from the N-terminal region of human ALDOC. AA range:21-70
Specificity	Aldolase C Polyclonal Antibody detects endogenous levels of Aldolase C protein.
Formulation	Liquid in PBS containing 50% glycerol, 0.5% BSA and 0.02% sodium azide.
Source	Polyclonal, Rabbit,IgG
Purification	The antibody was affinity-purified from rabbit antiserum by affinity-chromatography using epitope-specific immunogen.
Dilution	WB: 1/500 - 1/2000. IHC-p: 1:100-300 ELISA: 1/20000.. IF 1:50-200
Concentration	1 mg/ml
Purity	≥90%
Storage Stability	-20°C/1 year
Synonyms	ALDOC; ALDC; Fructose-bisphosphate aldolase C; Brain-type aldolase
Observed Band	39kD
Cell Pathway	mitochondrion,cytosol,cytoskeleton,extracellular exosome,
Tissue Specificity	Brain,Colon,Epithelium,Eye,Uterus,
Function	catalytic activity:D-fructose 1,6-bisphosphate = glyceraldehyde 3-phosphate + D-glyceraldehyde 3-phosphate.,miscellaneous:In vertebrates, three forms of this ubiquitous glycolytic enzyme are found, aldolase A in muscle, aldolase B in liver and aldolase C in brain.,pathway:Carbohydrate degradation; glycolysis; D-glyceraldehyde 3-phosphate and glyceraldehyde 3-phosphate from D-glucose: step 4/4.,similarity:Belongs to the class I fructose-bisphosphate aldolase family.,subunit:Homotetramer.,
Background	This gene encodes a member of the class I fructose-bisphosphate aldolase gene family. Expressed specifically in the hippocampus and Purkinje cells of the brain, the encoded protein is a glycolytic enzyme that catalyzes the reversible aldol

Nanjing BYabscience technology Co.,Ltd



cleavage of fructose-1,6-biphosphate and fructose 1-phosphate to dihydroxyacetone phosphate and either glyceraldehyde-3-phosphate or glyceraldehyde, respectively. [provided by RefSeq, Jul 2008],

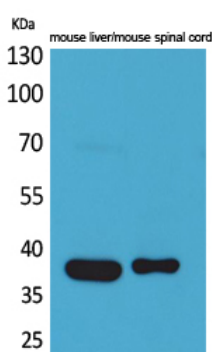
matters needing attention

Avoid repeated freezing and thawing!

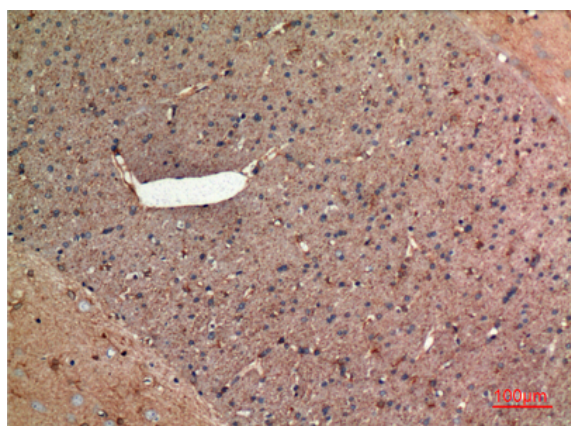
Usage suggestions

This product can be used in immunological reaction related experiments. For more information, please consult technical personnel.

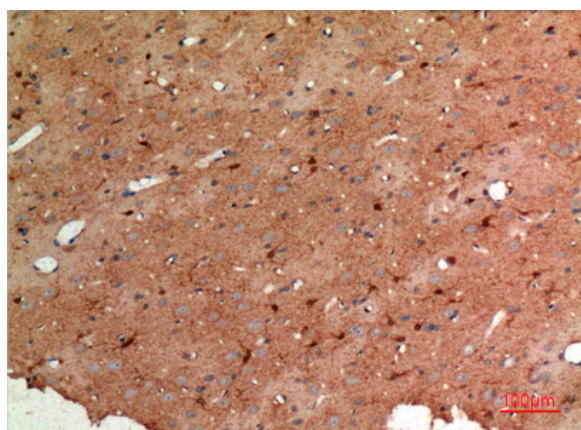
Products Images



Western Blot analysis of mouse liver, mouse spinal cord cells using Aldolase C Polyclonal Antibody. Secondary antibody(catalog#:RS0002) was diluted at 1:20000



Immunohistochemical analysis of paraffin-embedded rat-brain, antibody was diluted at 1:100



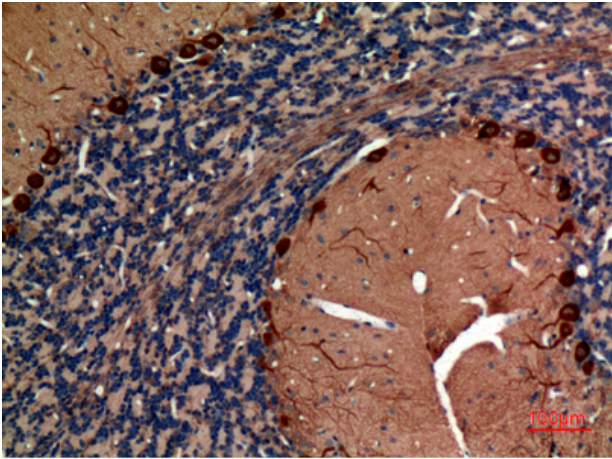
Immunohistochemical analysis of paraffin-embedded rat-brain, antibody was diluted at 1:100

Nanjing BYabs science technology Co.,Ltd

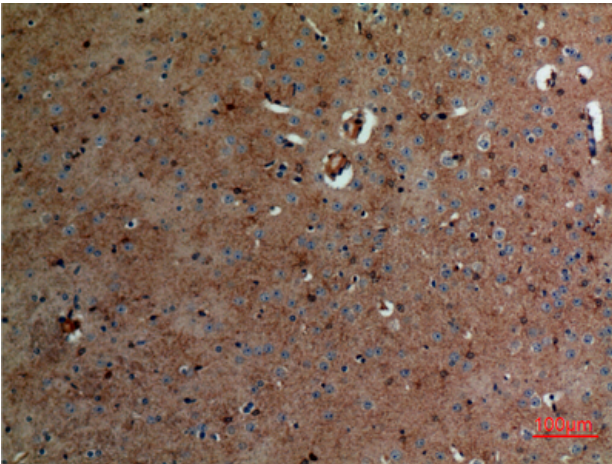
网址: www.njbybio.com

官方热线: 025-5229-8998

监督电话: 15950492658



Immunohistochemical analysis of paraffin-embedded rat-brain, antibody was diluted at 1:100



Immunohistochemical analysis of paraffin-embedded mouse-brain, antibody was diluted at 1:100