



UBE3C Polyclonal Antibody

Catalog No	BYab-02816
Isotype	IgG
Reactivity	Human;Rat;Mouse;
Applications	WB;ELISA
Gene Name	UBE3C
Protein Name	Ubiquitin-protein ligase E3C
Immunogen	Synthesized peptide derived from the Internal region of human UBE3C.
Specificity	UBE3C Polyclonal Antibody detects endogenous levels of UBE3C protein.
Formulation	Liquid in PBS containing 50% glycerol, 0.5% BSA and 0.02% sodium azide.
Source	Polyclonal, Rabbit,IgG
Purification	The antibody was affinity-purified from rabbit antiserum by affinity-chromatography using epitope-specific immunogen.
Dilution	Western Blot: 1/500 - 1/2000. ELISA: 1/10000. Not yet tested in other applications.
Concentration	1 mg/ml
Purity	≥90%
Storage Stability	-20°C/1 year
Synonyms	UBE3C; KIAA0010; KIAA10; Ubiquitin-protein ligase E3C; HectH2
Observed Band	125kD
Cell Pathway	proteasome complex,intracellular,nucleus,cytoplasm,
Tissue Specificity	Highly expressed in skeletal muscle. Detected at much lower levels in kidney and pancreas.
Function	function:E3 ubiquitin-protein ligase that accepts ubiquitin from the E2 ubiquitin-conjugating enzyme UBE2D1 in the form of a thioester and then directly transfers the ubiquitin to targeted substrates. It can target itself for ubiquitination in vitro and may promote its own degradation in vivo.,miscellaneous:A cysteine residue is required for ubiquitin-thioester formation.,pathway:Protein modification; protein ubiquitination.,similarity:Contains 1 HECT (E6AP-type E3 ubiquitin-protein ligase) domain.,similarity:Contains 1 IQ domain.,subunit:Interacts with 26S proteasomes. Binds CAND2.,tissue specificity:Highly expressed in skeletal muscle. Detected at much lower levels in kidney and pancreas.,
Background	function:E3 ubiquitin-protein ligase that accepts ubiquitin from the E2 ubiquitin-conjugating enzyme UBE2D1 in the form of a thioester and then directly

Nanjing BYabscience technology Co.,Ltd



transfers the ubiquitin to targeted substrates. It can target itself for ubiquitination in vitro and may promote its own degradation in vivo.,miscellaneous:A cysteine residue is required for ubiquitin-thioester formation.,pathway:Protein modification; protein ubiquitination.,similarity:Contains 1 HECT (E6AP-type E3 ubiquitin-protein ligase) domain.,similarity:Contains 1 IQ domain.,subunit:Interacts with 26S proteasomes. Binds CAND2.,tissue specificity:Highly expressed in skeletal muscle. Detected at much lower levels in kidney and pancreas.,

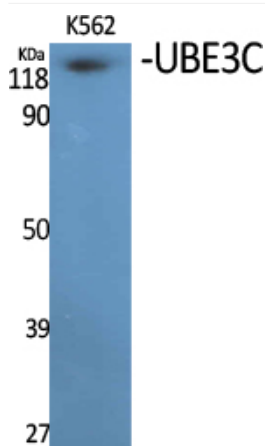
matters needing attention

Avoid repeated freezing and thawing!

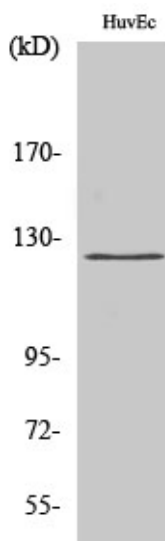
Usage suggestions

This product can be used in immunological reaction related experiments. For more information, please consult technical personnel.

Products Images



Western Blot analysis of various cells using UBE3C Polyclonal Antibody. Secondary antibody(catalog#:RS0002) was diluted at 1:20000 cells nucleus extracted by Minute TM Cytoplasmic and Nuclear Fractionation kit (SC-003,Inventbiotech,MN,USA).



Western Blot analysis of HuvEc cells using UBE3C Polyclonal Antibody. Secondary antibody(catalog#:RS0002) was diluted at 1:20000 cells nucleus extracted by Minute TM Cytoplasmic and Nuclear Fractionation kit (SC-003,Inventbiotech,MN,USA).

Nanjing BYabs science technology Co.,Ltd

网址: www.njbybio.com

官方热线: 025-5229-8998

监督电话: 15950492658