



TPH2 Polyclonal Antibody

Catalog No	BYab-02803
Isotype	IgG
Reactivity	Human;Mouse;Rat;Monkey
Applications	WB;ELISA
Gene Name	TPH2
Protein Name	Tryptophan 5-hydroxylase 2
Immunogen	The antiserum was produced against synthesized peptide derived from human TPH2. AA range:4-53
Specificity	TPH2 Polyclonal Antibody detects endogenous levels of TPH2 protein.
Formulation	Liquid in PBS containing 50% glycerol, 0.5% BSA and 0.02% sodium azide.
Source	Polyclonal, Rabbit,IgG
Purification	The antibody was affinity-purified from rabbit antiserum by affinity-chromatography using epitope-specific immunogen.
Dilution	Western Blot: 1/500 - 1/2000. ELISA: 1/40000. Not yet tested in other applications.
Concentration	1 mg/ml
Purity	≥90%
Storage Stability	-20°C/1 year
Synonyms	TPH2; NTPH; Tryptophan 5-hydroxylase 2; Neuronal tryptophan hydroxylase; Tryptophan 5-monooxygenase 2
Observed Band	56kD
Cell Pathway	cytosol,neuron projection,
Tissue Specificity	Brain specific.
Function	catalytic activity:L-tryptophan + tetrahydrobiopterin + O(2) = 5-hydroxy-L-tryptophan + 4a-hydroxytetrahydrobiopterin.,cofactor:Fe(2+) ion.,disease:Genetic variation in TPH2 may influence susceptibility to major depressive disorder (MDD) [MIM:608516]..pathway:Aromatic compound metabolism; serotonin biosynthesis; serotonin from L-tryptophan: step 1/2..similarity:Belongs to the biopterin-dependent aromatic amino acid hydroxylase family..similarity:Contains 1 ACT domain..tissue specificity:Brain specific.,

Nanjing BYabscience technology Co.,Ltd

网址: www.njbybio.com

官方热线: 025-5229-8998

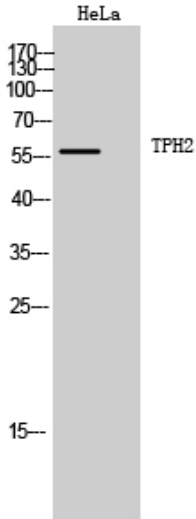
监督电话: 15950492658



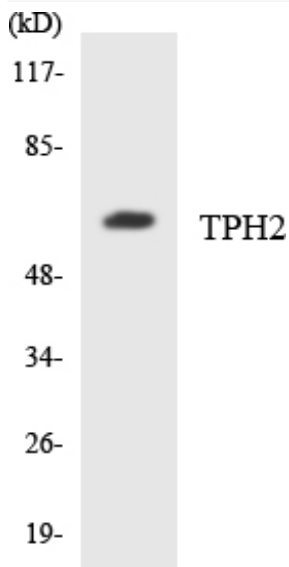
Background	This gene encodes a member of the pterin-dependent aromatic acid hydroxylase family. The encoded protein catalyzes the first and rate limiting step in the biosynthesis of serotonin, an important hormone and neurotransmitter. Mutations in this gene may be associated with psychiatric diseases such as bipolar affective disorder and major depression. [provided by RefSeq, Feb 2016],
matters needing attention	Avoid repeated freezing and thawing!
Usage suggestions	This product can be used in immunological reaction related experiments. For more information, please consult technical personnel.



Products Images



Western Blot analysis of HeLa cells using TPH2 Polyclonal Antibody. Secondary antibody(catalog#:RS0002) was diluted at 1:20000



Western blot analysis of the lysates from HUVEC cells using TPH2 antibody.