



SEN7 Polyclonal Antibody

Catalog No	BYab-02783
Isotype	IgG
Reactivity	Human;Mouse
Applications	WB;IHC;IF;ELISA
Gene Name	SEN7
Protein Name	Sentrin-specific protease 7
Immunogen	The antiserum was produced against synthesized peptide derived from human SEN7. AA range:991-1040
Specificity	SEN7 Polyclonal Antibody detects endogenous levels of SEN7 protein.
Formulation	Liquid in PBS containing 50% glycerol, 0.5% BSA and 0.02% sodium azide.
Source	Polyclonal, Rabbit,IgG
Purification	The antibody was affinity-purified from rabbit antiserum by affinity-chromatography using epitope-specific immunogen.
Dilution	WB: 1/500 - 1/2000. IHC: 1/100 - 1/300. ELISA: 1/40000.. IF 1:50-200
Concentration	1 mg/ml
Purity	≥90%
Storage Stability	-20°C/1 year
Synonyms	SEN7; KIAA1707; SSP2; SUSP2; Sentrin-specific protease 7; SUMO-1-specific protease 2; Sentrin/SUMO-specific protease SEN7
Observed Band	112kD
Cell Pathway	Cytoplasm .
Tissue Specificity	Brain,Epithelium,Fetal kidney,Placenta,
Function	alternative products:Experimental confirmation may be lacking for some isoforms,caution:The sequence shown here is derived from an Ensembl automatic analysis pipeline and should be considered as preliminary data.,function:Protease that deconjugates SUMO2 and SUMO3 from targeted proteins, but not SUMO1. Catalyzes the deconjugation of poly-SUMO2 and poly-SUMO3 chains. Has very low efficiency in processing full-length SUMO proteins to their mature forms.,similarity:Belongs to the peptidase C48 family.,
Background	The reversible posttranslational modification of proteins by the addition of small ubiquitin-like SUMO proteins (see SUMO1; MIM 601912) is required for many cellular processes. SUMO-specific proteases, such as SEN7, process SUMO

Nanjing BYabscience technology Co.,Ltd



precursors to generate a C-terminal diglycine motif required for the conjugation reaction. They also display isopeptidase activity for deconjugation of SUMO-conjugated substrates (Lima and Reverter, 2008 [PubMed 18799455]).[supplied by OMIM, Jun 2009],

matters needing attention

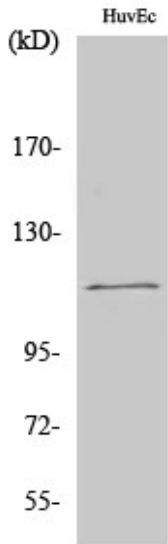
Avoid repeated freezing and thawing!

Usage suggestions

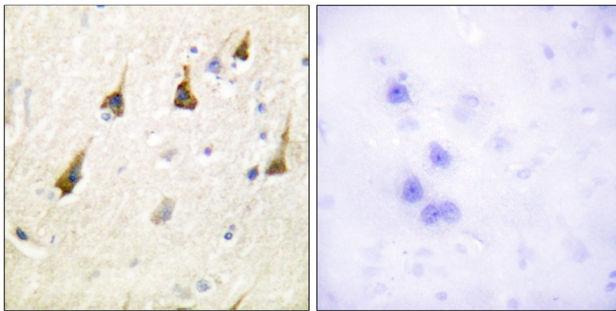
This product can be used in immunological reaction related experiments. For more information, please consult technical personnel.



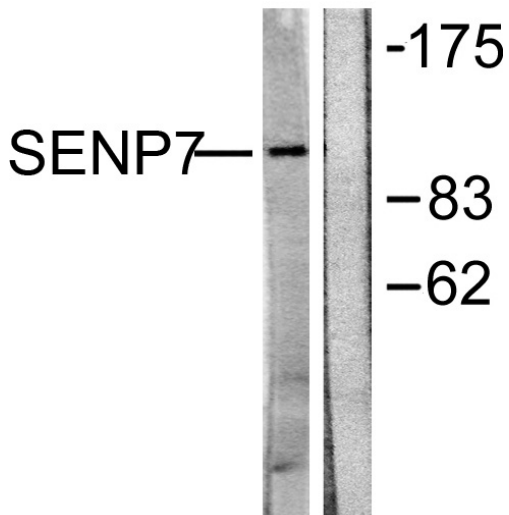
Products Images



Western Blot analysis of various cells using SENP7 Polyclonal Antibody cells nucleus extracted by Minute TM Cytoplasmic and Nuclear Fractionation kit (SC-003, Inventbiotech, MN, USA).



Immunohistochemistry analysis of paraffin-embedded human brain tissue, using SENP7 Antibody. The picture on the right is blocked with the synthesized peptide.



Western blot analysis of lysates from HUVEC cells, using SENP7 Antibody. The lane on the right is blocked with the synthesized peptide.