



# PDE10A Polyclonal Antibody

Catalog No	BYab-02739
Isotype	IgG
Reactivity	Human;Rat
Applications	WB;ELISA;IHC
Gene Name	PDE10A
Protein Name	cAMP and cAMP-inhibited cGMP 3',5'-cyclic phosphodiesterase 10A
Immunogen	The antiserum was produced against synthesized peptide derived from human PDE10A. AA range:21-70
Specificity	PDE10A Polyclonal Antibody detects endogenous levels of PDE10A protein.
Formulation	Liquid in PBS containing 50% glycerol, 0.5% BSA and 0.02% sodium azide.
Source	Polyclonal, Rabbit,IgG
Purification	The antibody was affinity-purified from rabbit antiserum by affinity-chromatography using epitope-specific immunogen.
Dilution	WB 1:500-2000;IHC-p 1:50-300; ELISA 2000-20000
Concentration	1 mg/ml
Purity	≥90%
Storage Stability	-20°C/1 year
Synonyms	PDE10A; cAMP and cAMP-inhibited cGMP 3'; 5'-cyclic phosphodiesterase 10A
Observed Band	75kD
Cell Pathway	Cytoplasm, cytosol .
Tissue Specificity	Abundant in the putamen and caudate nucleus regions of brain and testis, moderately expressed in the thyroid gland, pituitary gland, thalamus and cerebellum.
Function	alternative products:Isoforms differ in their N-terminal region,catalytic activity:Guanosine 3',5'-cyclic phosphate + H(2)O = guanosine 5'-phosphate.,catalytic activity:Nucleoside 3',5'-cyclic phosphate + H(2)O = nucleoside 5'-phosphate.,cofactor:Binds 1 magnesium ion.,cofactor:Binds 1 zinc ion.,domain:Composed of a C-terminal catalytic domain containing two divalent metal sites and an N-terminal regulatory domain which contains one cyclic nucleotide-binding region.,domain:The tandem GAF domains bind cAMP, and regulate enzyme activity. The binding of cAMP stimulates enzyme activity.,enzyme regulation:Inhibited by dipyridamole and moderately by IBMX. cAMP acts as an allosteric activator.,function:Plays a role in signal transduction

Nanjing BYabscience technology Co.,Ltd



by regulating the intracellular concentration of cyclic nucleotides. Can hydrolyze both cAMP and cGMP, but has higher affinity for cAMP and is more efficient w

## Background

The protein encoded by this gene belongs to the cyclic nucleotide phosphodiesterase family. It plays a role in signal transduction by regulating the intracellular concentration of cyclic nucleotides. This protein can hydrolyze both cAMP and cGMP to the corresponding nucleoside 5' monophosphate, but has higher affinity for cAMP, and is more efficient with cAMP as substrate. Alternatively spliced transcript variants have been described for this gene. [provided by RefSeq, Dec 2011],

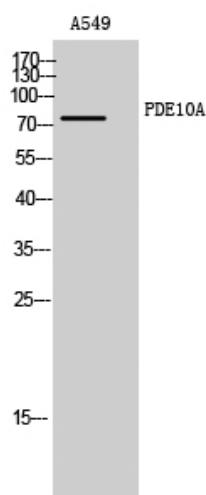
## matters needing attention

Avoid repeated freezing and thawing!

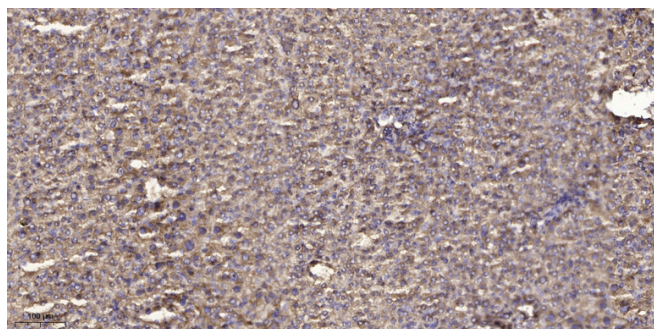
## Usage suggestions

This product can be used in immunological reaction related experiments. For more information, please consult technical personnel.

## Products Images



Western Blot analysis of A549 cells using PDE10A Polyclonal Antibody



Immunohistochemical analysis of paraffin-embedded human liver cancer. 1, Antibody was diluted at 1:200(4° overnight). 2, Tris-EDTA, pH9.0 was used for antigen retrieval. 3, Secondary antibody was diluted at 1:200(room temperature, 45min).

**Nanjing BYabs science technology Co.,Ltd**

网址: [www.njbybio.com](http://www.njbybio.com)

官方热线: 025-5229-8998

监督电话: 15950492658