



GBDR1 Polyclonal Antibody

Catalog No	BYab-02638
Isotype	IgG
Reactivity	Human;Rat;Mouse;
Applications	WB;IHC;IF;ELISA
Gene Name	UBAC1
Protein Name	Ubiquitin-associated domain-containing protein 1
Immunogen	The antiserum was produced against synthesized peptide derived from human UBAC1. AA range:91-140
Specificity	GBDR1 Polyclonal Antibody detects endogenous levels of GBDR1 protein.
Formulation	Liquid in PBS containing 50% glycerol, 0.5% BSA and 0.02% sodium azide.
Source	Polyclonal, Rabbit,IgG
Purification	The antibody was affinity-purified from rabbit antiserum by affinity-chromatography using epitope-specific immunogen.
Dilution	WB: 1/500 - 1/2000. IHC: 1/100 - 1/300. ELISA: 1/10000.. IF 1:50-200
Concentration	1 mg/ml
Purity	≥90%
Storage Stability	-20°C/1 year
Synonyms	UBAC1; GBDR1; KPC2; UBADC1; Ubiquitin-associated domain-containing protein 1; UBA domain-containing protein 1; E3 ubiquitin-protein ligase subunit KPC2; Glioblastoma cell differentiation-related protein 1; Kip1 ubiquitination-promoting com
Observed Band	45kD
Cell Pathway	Cytoplasm .
Tissue Specificity	Ubiquitous.
Function	function:Non-catalytic subunit of the KPC complex that acts as E3 ubiquitin-protein ligase. Required for poly-ubiquitination and proteasome-mediated degradation of CDKN1B during G1 phase of the cell cycle..pathway:Protein modification; protein ubiquitination..similarity:Contains 1 STI1 domain..similarity:Contains 1 ubiquitin-like domain..similarity:Contains 2 UBA domains..subunit:Component of the KPC complex composed of RNF123/KPC1 and UBAC1/KPC2. Interacts with RNF123 via its N-terminal

Nanjing BYabscience technology Co.,Ltd



domain. Interacts with the proteasome via its N-terminal domain.,tissue specificity:Ubiquitous.,

Background

function:Non-catalytic subunit of the KPC complex that acts as E3 ubiquitin-protein ligase. Required for poly-ubiquitination and proteasome-mediated degradation of CDKN1B during G1 phase of the cell cycle.,pathway:Protein modification; protein ubiquitination.,similarity:Contains 1 STI1 domain.,similarity:Contains 1 ubiquitin-like domain.,similarity:Contains 2 UBA domains.,subunit:Component of the KPC complex composed of RNF123/KPC1 and UBAC1/KPC2. Interacts with RNF123 via its N-terminal domain. Interacts with the proteasome via its N-terminal domain.,tissue specificity:Ubiquitous.,

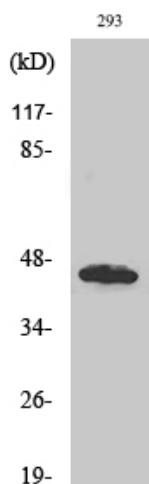
matters needing attention

Avoid repeated freezing and thawing!

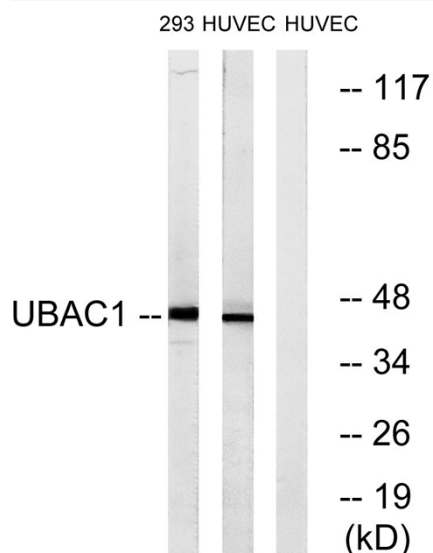
Usage suggestions

This product can be used in immunological reaction related experiments. For more information, please consult technical personnel.

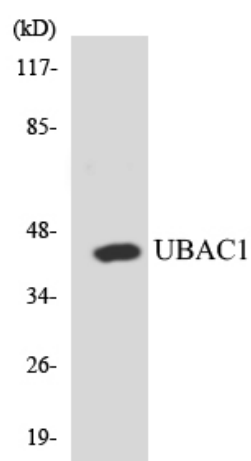
Products Images



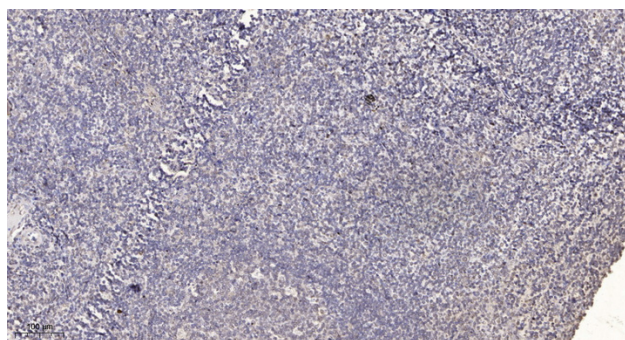
Western Blot analysis of various cells using GBDR1 Polyclonal Antibody diluted at 1:500



Western blot analysis of lysates from 293 and HUVEC cells, using UBAC1 Antibody. The lane on the right is blocked with the synthesized peptide.



Western blot analysis of the lysates from HT-29 cells using UBAC1 antibody.



Immunohistochemical analysis of paraffin-embedded human tonsil. 1, Antibody was diluted at 1:200(4° overnight). 2, Tris-EDTA,pH9.0 was used for antigen retrieval. 3,Secondary antibody was diluted at 1:200(room temperature, 30min).