



# CYP4A11/22 Polyclonal Antibody

<b>Catalog No</b>	BYab-02599
<b>Isotype</b>	IgG
<b>Reactivity</b>	Human;Rat;Mouse;
<b>Applications</b>	WB;ELISA
<b>Gene Name</b>	CYP4A11/CYP4A22
<b>Protein Name</b>	Cytochrome P450 4A11/22
<b>Immunogen</b>	The antiserum was produced against synthesized peptide derived from human Cytochrome P450 4A11/22. AA range:391-440
<b>Specificity</b>	CYP4A11/22 Polyclonal Antibody detects endogenous levels of CYP4A11/22 protein.
<b>Formulation</b>	Liquid in PBS containing 50% glycerol, 0.5% BSA and 0.02% sodium azide.
<b>Source</b>	Polyclonal, Rabbit,IgG
<b>Purification</b>	The antibody was affinity-purified from rabbit antiserum by affinity-chromatography using epitope-specific immunogen.
<b>Dilution</b>	Western Blot: 1/500 - 1/2000. ELISA: 1/40000. Not yet tested in other applications.
<b>Concentration</b>	1 mg/ml
<b>Purity</b>	≥90%
<b>Storage Stability</b>	-20°C/1 year
<b>Synonyms</b>	CYP4A11; CYP4A2; Cytochrome P450 4A11; 20-hydroxyeicosatetraenoic acid synthase; 20-HETE synthase; CYP4A11; CYP4A11; Cytochrome P-450HK-omega; Cytochrome P450HL-omega; Fatty acid omega-hydroxylase; Lauric acid omega-hydroxylase; CYP4A22; C
<b>Observed Band</b>	60kD
<b>Cell Pathway</b>	Endoplasmic reticulum membrane ; Peripheral membrane protein . Microsome membrane ; Peripheral membrane protein .
<b>Tissue Specificity</b>	Expressed in liver (PubMed:7679927). Expressed in S2 and S3 segments of proximal tubules in cortex and outer medulla of kidney (PubMed:7679927, PubMed:10660572).
<b>Function</b>	catalytic activity:Octane + reduced rubredoxin + O(2) = 1-octanol + oxidized rubredoxin + H(2)O.,cofactor:Heme group.,function:Catalyzes the omega- and (omega-1)-hydroxylation of various fatty acids such as laurate, myristate and palmitate. Has little activity toward prostaglandins A1 and E1. Oxidizes arachidonic acid to 20-hydroxyeicosatetraenoic acid (20-HETE).,online

**Nanjing BYabscience technology Co.,Ltd**



information:CYP4A11 alleles,polymorphism:CYP4A11v seems to be a rare allelic variant of CYP4A11, it seems to be unstable and not to metabolize lauric acid.,similarity:Belongs to the cytochrome P450 family.,tissue specificity:Kidney and liver.,

## Background

cytochrome P450 family 4 subfamily A member 11(CYP4A11) Homo sapiens This gene encodes a member of the cytochrome P450 superfamily of enzymes. The cytochrome P450 proteins are monooxygenases which catalyze many reactions involved in drug metabolism and synthesis of cholesterol, steroids and other lipids. This protein localizes to the endoplasmic reticulum and hydroxylates medium-chain fatty acids such as laurate and myristate. Multiple transcript variants have been found for this gene. [provided by RefSeq, Jan 2016],

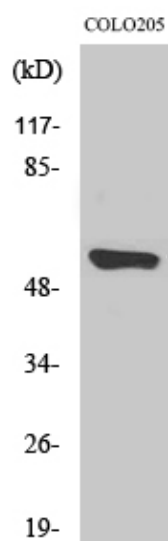
## matters needing attention

Avoid repeated freezing and thawing!

## Usage suggestions

This product can be used in immunological reaction related experiments. For more information, please consult technical personnel.

## Products Images



Western Blot analysis of various cells using CYP4A11/22 Polyclonal Antibody