



CYP2W1 Polyclonal Antibody

Catalog No	BYab-02592
Isotype	IgG
Reactivity	Human;Rat;Mouse;
Applications	WB;IHC;IF;ELISA
Gene Name	CYP2W1
Protein Name	Cytochrome P450 2W1
Immunogen	The antiserum was produced against synthesized peptide derived from human Cytochrome P450 2W1. AA range:311-360
Specificity	CYP2W1 Polyclonal Antibody detects endogenous levels of CYP2W1 protein.
Formulation	Liquid in PBS containing 50% glycerol, 0.5% BSA and 0.02% sodium azide.
Source	Polyclonal, Rabbit,IgG
Purification	The antibody was affinity-purified from rabbit antiserum by affinity-chromatography using epitope-specific immunogen.
Dilution	Western Blot: 1/500 - 1/2000. Immunohistochemistry: 1/100 - 1/300. Immunofluorescence: 1/200 - 1/1000. ELISA: 1/40000. Not yet tested in other applications.
Concentration	1 mg/ml
Purity	≥90%
Storage Stability	-20°C/1 year
Synonyms	CYP2W1; Cytochrome P450 2W1; CYP1IW1
Observed Band	55kD
Cell Pathway	Endoplasmic reticulum lumen . Cell membrane . Microsome membrane . About 8% are expressed on the cell surface. .
Tissue Specificity	Very low levels are detected in fetal and adult tissues. Highly expressed in several tumor samples, in particular colon and adrenal tumors.
Function	cofactor:Heme group.,similarity:Belongs to the cytochrome P450 family.,
Background	This gene encodes a member of the cytochrome P450 superfamily of enzymes. The cytochrome P450 proteins are monooxygenases which catalyze many reactions involved in drug metabolism and synthesis of cholesterol, steroids and other lipids. [provided by RefSeq, Jul 2008],
matters needing attention	Avoid repeated freezing and thawing!

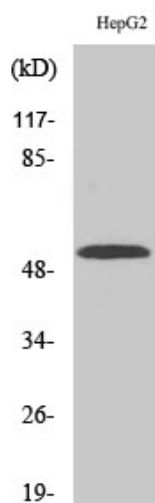
Nanjing BYabscience technology Co.,Ltd



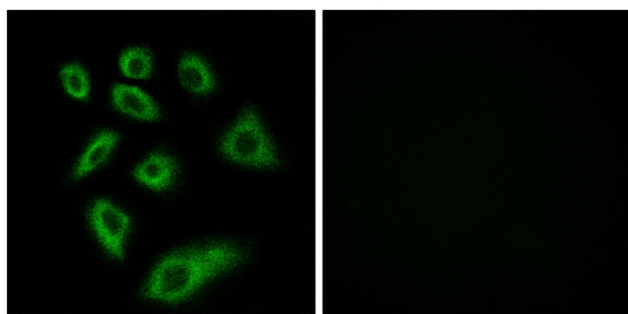
Usage suggestions

This product can be used in immunological reaction related experiments. For more information, please consult technical personnel.

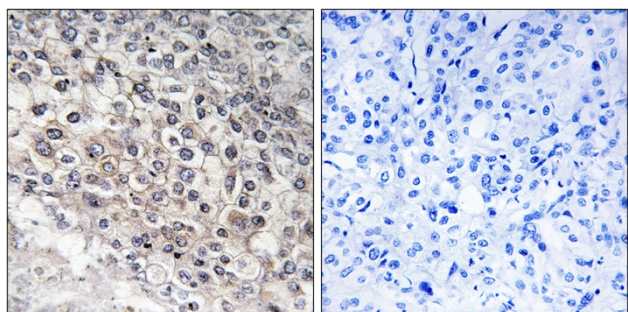
Products Images



Western Blot analysis of various cells using CYP2W1 Polyclonal Antibody



Immunofluorescence analysis of HUVEC cells, using Cytochrome P450 2W1 Antibody. The picture on the right is blocked with the synthesized peptide.



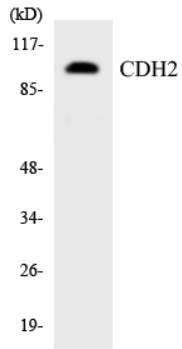
Immunohistochemistry analysis of paraffin-embedded human liver carcinoma tissue, using Cytochrome P450 2W1 Antibody. The picture on the right is blocked with the synthesized peptide.

Nanjing BYabscience technology Co.,Ltd

网址: www.njbybio.com

官方热线: 025-5229-8998

监督电话: 15950492658



Western blot analysis of the lysates from HT-29 cells using CDH2 antibody.