



Cathepsin E Polyclonal Antibody

Catalog No	BYab-02530
Isotype	IgG
Reactivity	Human;Mouse;Rat
Applications	WB;IHC;IF;ELISA
Gene Name	CTSE
Protein Name	Cathepsin E
Immunogen	The antiserum was produced against synthesized peptide derived from human Cathepsin E. AA range:243-292
Specificity	Cathepsin E Polyclonal Antibody detects endogenous levels of Cathepsin E protein.
Formulation	Liquid in PBS containing 50% glycerol, 0.5% BSA and 0.02% sodium azide.
Source	Polyclonal, Rabbit,IgG
Purification	The antibody was affinity-purified from rabbit antiserum by affinity-chromatography using epitope-specific immunogen.
Dilution	WB: 1/500 - 1/2000. IHC: 1/100 - 1/300. ELISA: 1/20000.. IF 1:50-200
Concentration	1 mg/ml
Purity	≥90%
Storage Stability	-20°C/1 year
Synonyms	CTSE; Cathepsin E
Observed Band	48kD
Cell Pathway	Endosome . The proenzyme is localized to the endoplasmic reticulum and Golgi apparatus, while the mature enzyme is localized to the endosome.
Tissue Specificity	Expressed abundantly in the stomach, the Clara cells of the lung and activated B-lymphocytes, and at lower levels in lymph nodes, skin and spleen. Not expressed in resting B-lymphocytes.
Function	catalytic activity:Similar to cathepsin D, but slightly broader specificity.,function:May have a role in immune function. Probably involved in the processing of antigenic peptides during MHC class II-mediated antigen presentation. May play a role in activation-induced lymphocyte depletion in the thymus, and in neuronal degeneration and glial cell activation in the brain.,PTM:Glycosylated. The nature of the carbohydrate chain varies between cell types. In fibroblasts, the proenzyme contains a high mannose-type oligosaccharide, while the mature enzyme contains a complex-type oligosaccharide. In erythrocyte membranes, both the proenzyme and mature

Nanjing BYabscience technology Co.,Ltd



enzyme contain a complex-type oligosaccharide.,PTM:Two forms are produced by autocatalytic cleavage, form I begins at Ile-54, form II begins at Thr-57.,similarity:Belongs to the peptidase A1 family.,subcellular location:The proenzyme is localized

Background

This gene encodes a member of the A1 family of peptidases. Alternative splicing of this gene results in multiple transcript variants. At least one of these variants encodes a preproprotein that is proteolytically processed to generate the mature enzyme. This enzyme, an aspartic endopeptidase, may be involved in antigen processing and the maturation of secretory proteins. Elevated expression of this gene has been observed in neurodegeneration. [provided by RefSeq, Nov 2015],

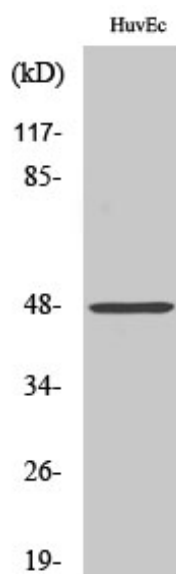
matters needing attention

Avoid repeated freezing and thawing!

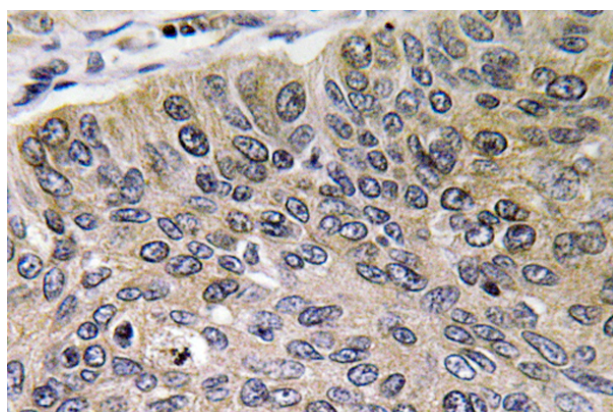
Usage suggestions

This product can be used in immunological reaction related experiments. For more information, please consult technical personnel.

Products Images



Western Blot analysis of various cells using Cathepsin E Polyclonal Antibody



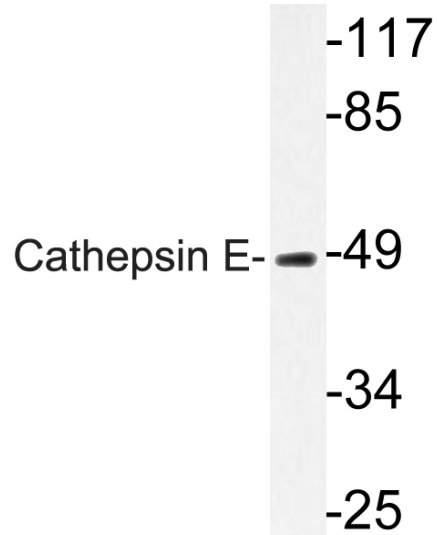
Immunohistochemistry analysis of Cathepsin E antibody in paraffin-embedded human lung carcinoma tissue.

Nanjing BYabs science technology Co.,Ltd

网址: www.njbybio.com

官方热线: 025-5229-8998

监督电话: 15950492658



Western blot analysis of lysate from HUVEC cells,
using Cathepsin?E antibody.