



# Carbonyl Reductase 1 Polyclonal Antibody

<b>Catalog No</b>	BYab-02525
<b>Isotype</b>	IgG
<b>Reactivity</b>	Human;Rat;Mouse;
<b>Applications</b>	WB;IHC;IF;ELISA
<b>Gene Name</b>	CBR1
<b>Protein Name</b>	Carbonyl reductase [NADPH] 1
<b>Immunogen</b>	The antiserum was produced against synthesized peptide derived from human CBR1. AA range:181-230
<b>Specificity</b>	Carbonyl Reductase 1 Polyclonal Antibody detects endogenous levels of Carbonyl Reductase 1 protein.
<b>Formulation</b>	Liquid in PBS containing 50% glycerol, 0.5% BSA and 0.02% sodium azide.
<b>Source</b>	Polyclonal, Rabbit,IgG
<b>Purification</b>	The antibody was affinity-purified from rabbit antiserum by affinity-chromatography using epitope-specific immunogen.
<b>Dilution</b>	WB: 1/500 - 1/2000. IHC: 1/100 - 1/300. ELISA: 1/40000.. IF 1:50-200
<b>Concentration</b>	1 mg/ml
<b>Purity</b>	≥90%
<b>Storage Stability</b>	-20°C/1 year
<b>Synonyms</b>	CBR1; CBR; CRN; Carbonyl reductase [NADPH] 1; 15-hydroxyprostaglandin dehydrogenase [NADP(+)]; NADPH-dependent carbonyl reductase 1; Prostaglandin 9-ketoreductase; Prostaglandin-E(2) 9-reductase
<b>Observed Band</b>	32kD
<b>Cell Pathway</b>	Cytoplasm .
<b>Tissue Specificity</b>	Expressed in kidney (at protein level).
<b>Function</b>	catalytic activity:(13E)-(15S)-11-alpha,15-dihydroxy-9-oxoprost-13-enoate + NADP(+) = (13E)-11-alpha-hydroxy-9,15-dioxoprost-13-enoate + NADPH.,catalytic activity:(5Z,13E)-(15S)-9-alpha,11-alpha,15-trihydroxyprosta-5,13-dienoate + NADP(+) = (5Z,13E)-(15S)-11-alpha,15-dihydroxy-9-oxoprost-5,13-dienoate + NADPH.,catalytic activity:R-CHOH-R' + NADP(+) = R-CO-R' + NADPH.,function:Catalyzes the reduction of a wide variety of carbonyl compounds including the antitumor anthracycline antibiotics. Can convert prostaglandin E2 to prostaglandin F2-alpha.,similarity:Belongs to the short-chain

**Nanjing BYabscience technology Co.,Ltd**



dehydrogenases/reductases (SDR) family.,subunit:Monomer.,

**Background**

The protein encoded by this gene belongs to the short-chain dehydrogenases/reductases (SDR) family, which function as NADPH-dependent oxidoreductases having wide specificity for carbonyl compounds, such as quinones, prostaglandins, and various xenobiotics. Alternatively spliced transcript variants have been found for this gene. [provided by RefSeq, Nov 2013],

**matters needing attention**

Avoid repeated freezing and thawing!

**Usage suggestions**

This product can be used in immunological reaction related experiments. For more information, please consult technical personnel.

Nanjing BYabscience technology Co.,Ltd

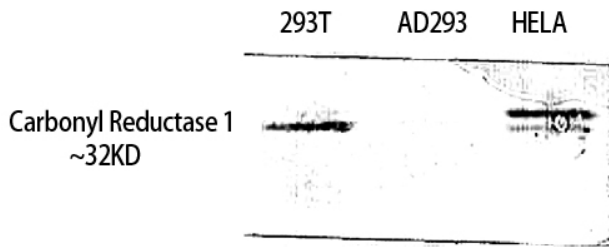
网址: [www.njbybio.com](http://www.njbybio.com)

官方热线: 025-5229-8998

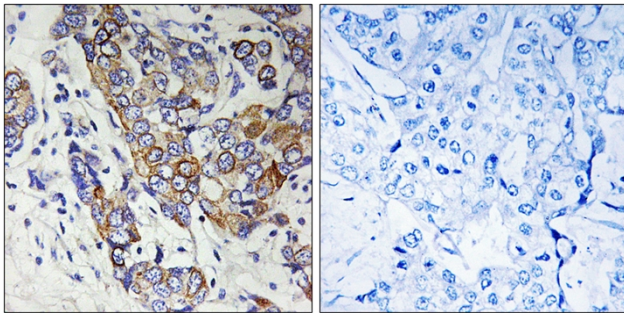
监督电话: 15950492658



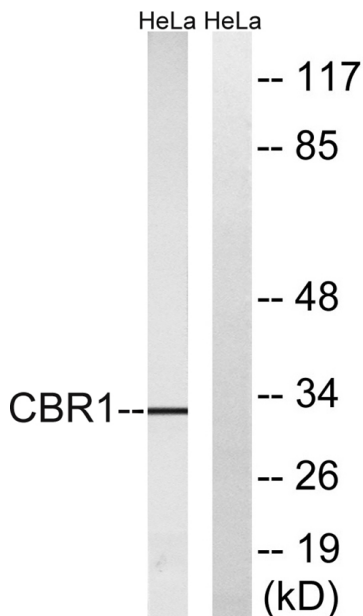
## Products Images



Western Blot analysis of 293T HELA using Carbonyl Reductase 1 Polyclonal Antibody. Antibody was diluted at 1:1000



Immunohistochemistry analysis of paraffin-embedded human breast carcinoma tissue, using CBR1 Antibody. The picture on the right is blocked with the synthesized peptide.



Western blot analysis of lysates from HeLa cells, using CBR1 Antibody. The lane on the right is blocked with the synthesized peptide.

**Nanjing BYabs science technology Co.,Ltd**

网址: [www.njbybio.com](http://www.njbybio.com)

官方热线: 025-5229-8998

监督电话: 15950492658

