



# Atg16L2 Polyclonal Antibody

<b>Catalog No</b>	BYab-02501
<b>Isotype</b>	IgG
<b>Reactivity</b>	Human;Rat;Mouse;
<b>Applications</b>	WB;ELISA
<b>Gene Name</b>	ATG16L2
<b>Protein Name</b>	Autophagy-related protein 16-2
<b>Immunogen</b>	The antiserum was produced against synthesized peptide derived from human ATG16L2. AA range:241-290
<b>Specificity</b>	Atg16L2 Polyclonal Antibody detects endogenous levels of Atg16L2 protein.
<b>Formulation</b>	Liquid in PBS containing 50% glycerol, 0.5% BSA and 0.02% sodium azide.
<b>Source</b>	Polyclonal, Rabbit,IgG
<b>Purification</b>	The antibody was affinity-purified from rabbit antiserum by affinity-chromatography using epitope-specific immunogen.
<b>Dilution</b>	Western Blot: 1/500 - 1/2000. ELISA: 1/20000. Not yet tested in other applications.
<b>Concentration</b>	1 mg/ml
<b>Purity</b>	≥90%
<b>Storage Stability</b>	-20°C/1 year
<b>Synonyms</b>	ATG16L2; WDR80; Autophagy-related protein 16-2; APG16-like 2; WD repeat-containing protein 80
<b>Observed Band</b>	70kD
<b>Cell Pathway</b>	Cytoplasm, cytosol . Localizes also to discrete punctae along the ciliary axoneme.
<b>Tissue Specificity</b>	Astrocyte,Blood,Eye,Spleen,Stomach,
<b>Function</b>	function:May play a role in autophagy.,similarity:Belongs to the WD repeat ATG16 family.,similarity:Contains 7 WD repeats.,
<b>Background</b>	function:May play a role in autophagy.,similarity:Belongs to the WD repeat ATG16 family.,similarity:Contains 7 WD repeats.,
<b>matters needing attention</b>	Avoid repeated freezing and thawing!

**Nanjing BYabscience technology Co.,Ltd**

网址: [www.njbybio.com](http://www.njbybio.com)

官方热线: 025-5229-8998

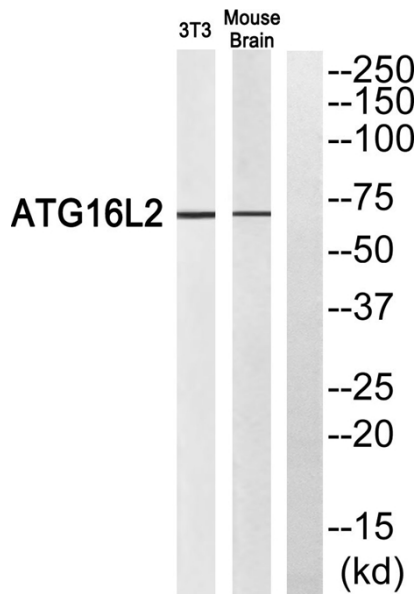
监督电话: 15950492658



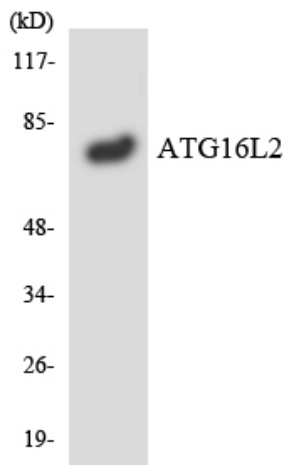
### Usage suggestions

This product can be used in immunological reaction related experiments. For more information, please consult technical personnel.

### Products Images



Western blot analysis of ATG16L2 Antibody. The lane on the right is blocked with the ATG16L2 peptide.



Western blot analysis of the lysates from RAW264.7 cells using ATG16L2 antibody.

Nanjing BYabscience technology Co.,Ltd

网址: [www.njbybio.com](http://www.njbybio.com)

官方热线: 025-5229-8998

监督电话: 15950492658