



APHC Polyclonal Antibody

Catalog No	BYab-02499
Isotype	IgG
Reactivity	Human;Mouse
Applications	WB;IHC;IF;ELISA
Gene Name	ACER3
Protein Name	Alkaline ceramidase 3
Immunogen	The antiserum was produced against synthesized peptide derived from human PHCA. AA range:171-220
Specificity	APHC Polyclonal Antibody detects endogenous levels of APHC protein.
Formulation	Liquid in PBS containing 50% glycerol, 0.5% BSA and 0.02% sodium azide.
Source	Polyclonal, Rabbit,IgG
Purification	The antibody was affinity-purified from rabbit antiserum by affinity-chromatography using epitope-specific immunogen.
Dilution	Western Blot: 1/500 - 1/2000. Immunohistochemistry: 1/100 - 1/300. Immunofluorescence: 1/200 - 1/1000. ELISA: 1/40000. Not yet tested in other applications.
Concentration	1 mg/ml
Purity	≥90%
Storage Stability	-20°C/1 year
Synonyms	ACER3; APHC; PHCA; Alkaline ceramidase 3; AlkCDase 3; Alkaline CDase 3; Alkaline dihydroceramidase SB89; Alkaline phytoceramidase; aPHC
Observed Band	35kD
Cell Pathway	Endoplasmic reticulum membrane ; Multi-pass membrane protein . Golgi apparatus membrane ; Multi-pass membrane protein .
Tissue Specificity	Ubiquitously expressed. Highly expressed in placenta (PubMed:11356846). Expressed in erythrocytes (PubMed:20207939).
Function	enzyme regulation:Activated by Ca(2+) and inhibited by Zn(2+).,function:Hydrolyzes only phytoceramide into phytosphingosine and free fatty acid. Does not have reverse activity.,similarity:Belongs to the alkaline ceramidase family.,tissue specificity:Ubiquitously expressed. Highest expression in placenta.,
Background	enzyme regulation:Activated by Ca(2+) and inhibited by Zn(2+).,function:Hydrolyzes only phytoceramide into phytosphingosine and free fatty acid. Does not have reverse activity.,similarity:Belongs to the alkaline

Nanjing BYabscience technology Co.,Ltd



ceramidase family.,tissue specificity:Ubiquitously expressed. Highest expression in placenta.,

matters needing attention

Avoid repeated freezing and thawing!

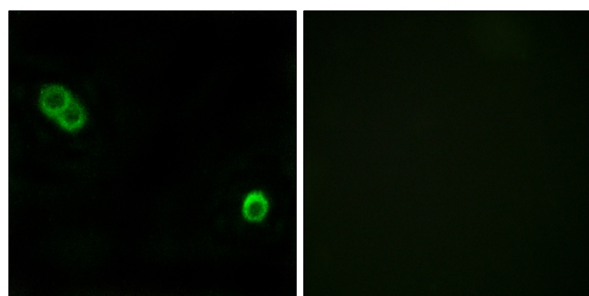
Usage suggestions

This product can be used in immunological reaction related experiments. For more information, please consult technical personnel.

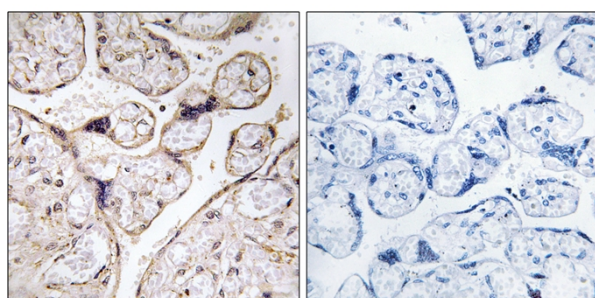
Products Images



Western Blot analysis of various cells using APHC Polyclonal Antibody

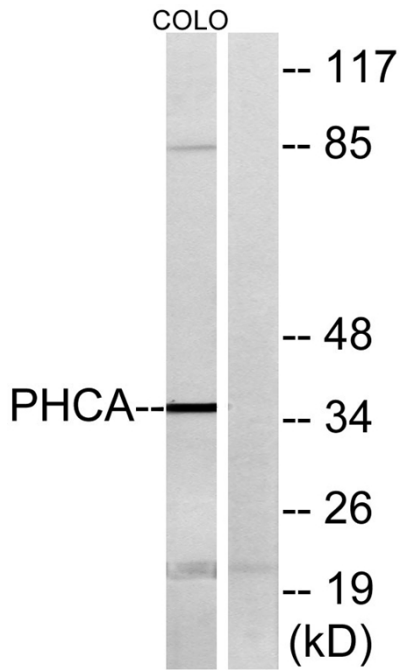


Immunofluorescence analysis of MCF7 cells, using PHCA Antibody. The picture on the right is blocked with the synthesized peptide.

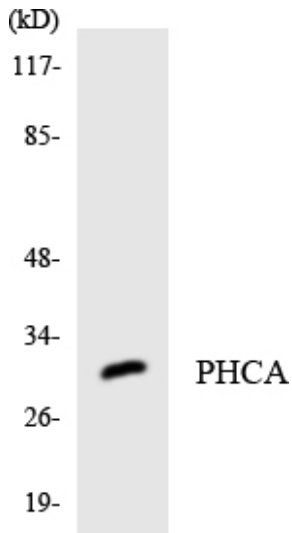


Immunohistochemistry analysis of paraffin-embedded human placenta tissue, using PHCA Antibody. The picture on the right is blocked with the synthesized peptide.

Nanjing BYabscience technology Co.,Ltd



Western blot analysis of lysates from COLO cells, using PHCA Antibody. The lane on the right is blocked with the synthesized peptide.



Western blot analysis of the lysates from HT-29 cells using PHCA antibody.