



AMPD3 Polyclonal Antibody

Catalog No	BYab-02497
Isotype	IgG
Reactivity	Human;Mouse;Rat
Applications	IHC;IF;ELISA
Gene Name	AMPD3
Protein Name	AMP deaminase 3
Immunogen	Synthesized peptide derived from AMPD3 . at AA range: 280-360
Specificity	AMPD3 Polyclonal Antibody detects endogenous levels of AMPD3 protein.
Formulation	Liquid in PBS containing 50% glycerol, 0.5% BSA and 0.02% sodium azide.
Source	Polyclonal, Rabbit,IgG
Purification	The antibody was affinity-purified from rabbit antiserum by affinity-chromatography using epitope-specific immunogen.
Dilution	IHC: 1/100 - 1/300. ELISA: 1/40000.. IF 1:50-200
Concentration	1 mg/ml
Purity	≥90%
Storage Stability	-20°C/1 year
Synonyms	AMPD3; AMP deaminase 3; AMP deaminase isoform E; Erythrocyte AMP deaminase
Observed Band	
Cell Pathway	cytosol,
Tissue Specificity	Brain,Hippocampus,Keratinocyte,Synovial membrane tissue,
Function	catalytic activity:AMP + H(2)O = IMP + NH(3).,disease:Defects in AMPD3 are the cause of adenosine monophosphate deaminase deficiency erythrocyte type (AMPDDE) [MIM:102772]. AMPDDE is a metabolic disorder due to lack of activity of the erythrocyte isoform of AMP deaminase. It is a clinically asymptomatic condition characterized by a 50% increase in steady-state levels of ATP in affected cells. Individuals with complete deficiency of erythrocyte AMP deaminase are healthy and have no hematologic disorders.,function:AMP deaminase plays a critical role in energy metabolism.,pathway:Purine metabolism; IMP biosynthesis via salvage pathway; IMP from AMP: step 1/1.,similarity:Belongs to the adenosine and AMP deaminases family.,subunit:Homotetramer.,tissue specificity:Three isoforms are present in mammals: AMP deaminase 1 is the predominant form in

Nanjing BYabscience technology Co.,Ltd



skeletal muscle; AMP deaminase 2 predominates in

Background

This gene encodes a member of the AMP deaminase gene family. The encoded protein is a highly regulated enzyme that catalyzes the hydrolytic deamination of adenosine monophosphate to inosine monophosphate, a branch point in the adenylate catabolic pathway. This gene encodes the erythrocyte (E) isoforms, whereas other family members encode isoforms that predominate in muscle (M) and liver (L) cells. Mutations in this gene lead to the clinically asymptomatic, autosomal recessive condition erythrocyte AMP deaminase deficiency. Alternatively spliced transcript variants encoding different isoforms of this gene have been described. [provided by RefSeq, Jul 2008],

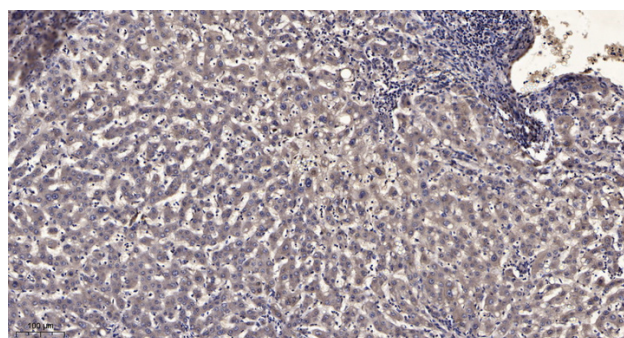
matters needing attention

Avoid repeated freezing and thawing!

Usage suggestions

This product can be used in immunological reaction related experiments. For more information, please consult technical personnel.

Products Images



Immunohistochemical analysis of paraffin-embedded human liver cancer. 1, Antibody was diluted at 1:200(4° overnight). 2, Tris-EDTA,pH9.0 was used for antigen retrieval. 3,Secondary antibody was diluted at 1:200(room temperature, 45min).

Nanjing BYabscience technology Co.,Ltd

网址: www.njbybio.com

官方热线: 025-5229-8998

监督电话: 15950492658