



ADAM32 Polyclonal Antibody

Catalog No	BYab-02476
Isotype	IgG
Reactivity	Human;Rat;Mouse;
Applications	WB;ELISA
Gene Name	ADAM32
Protein Name	Disintegrin and metalloproteinase domain-containing protein 32
Immunogen	Synthesized peptide derived from ADAM32 . at AA range: 460-540
Specificity	ADAM32 Polyclonal Antibody detects endogenous levels of ADAM32 protein.
Formulation	Liquid in PBS containing 50% glycerol, 0.5% BSA and 0.02% sodium azide.
Source	Polyclonal, Rabbit,IgG
Purification	The antibody was affinity-purified from rabbit antiserum by affinity-chromatography using epitope-specific immunogen.
Dilution	Western Blot: 1/500 - 1/2000. ELISA: 1/40000. Not yet tested in other applications.
Concentration	1 mg/ml
Purity	≥90%
Storage Stability	-20°C/1 year
Synonyms	ADAM32; Disintegrin and metalloproteinase domain-containing protein 32; ADAM 32
Observed Band	87kD
Cell Pathway	Membrane ; Single-pass type I membrane protein .
Tissue Specificity	Testis specific.
Function	function:May play a role in sperm development and fertilization This is a non-catalytic metalloprotease-like protein.,similarity:Contains 1 disintegrin domain.,similarity:Contains 1 EGF-like domain.,similarity:Contains 1 peptidase M12B domain.,tissue specificity:Testis specific.,
Background	ADAM metallopeptidase domain 32(ADAM32) Homo sapiens This gene encodes a member of the disintegrin family of membrane-anchored proteins that play a role in diverse biological processes such as brain development, fertilization, tumor development and inflammation. This gene is predominantly expressed in the testis. The encoded protein undergoes proteolytic processing to generate a mature polypeptide comprised of an metalloprotease, disintegrin and epidermal

Nanjing BYabscience technology Co.,Ltd



growth factor-like domains. This gene is located in a cluster of other disintegrin and metallopeptidase family genes on chromosome 8. Alternative splicing results in multiple transcript variants encoding different isoforms. [provided by RefSeq, Sep 2015],

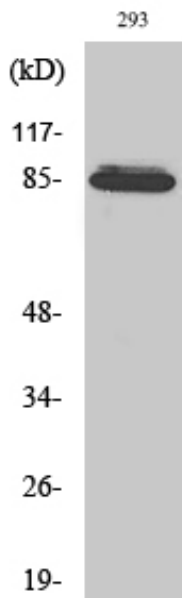
matters needing attention

Avoid repeated freezing and thawing!

Usage suggestions

This product can be used in immunological reaction related experiments. For more information, please consult technical personnel.

Products Images



Western Blot analysis of various cells using ADAM32 Polyclonal Antibody diluted at 1:1000