



ACCA Polyclonal Antibody

Catalog No	BYab-02464
Isotype	IgG
Reactivity	Human;Mouse;Rat;Bovine;Canine
Applications	WB;IHC;IF;ELISA
Gene Name	ACACA
Protein Name	Acetyl-CoA carboxylase 1
Immunogen	The antiserum was produced against synthesized peptide derived from human Acetyl-CoA Carboxylase. AA range:46-95
Specificity	ACCA Polyclonal Antibody detects endogenous levels of ACCA protein.
Formulation	Liquid in PBS containing 50% glycerol, 0.5% BSA and 0.02% sodium azide.
Source	Polyclonal, Rabbit,IgG
Purification	The antibody was affinity-purified from rabbit antiserum by affinity-chromatography using epitope-specific immunogen.
Dilution	WB: 1/500 - 1/2000. IHC: 1/100 - 1/300. ELISA: 1/5000.. IF 1:50-200
Concentration	1 mg/ml
Purity	≥90%
Storage Stability	-20°C/1 year
Synonyms	ACACA; ACAC; ACC1; ACCA; Acetyl-CoA carboxylase 1; ACC1; ACC-alpha
Observed Band	265kD
Cell Pathway	Cytoplasm, cytosol .
Tissue Specificity	Expressed in brain, placenta, skeletal muscle, renal, pancreatic and adipose tissues; expressed at low level in pulmonary tissue; not detected in the liver.
Function	catalytic activity:ATP + acetyl-CoA + HCO(3)(-) = ADP + phosphate + malonyl-CoA.,catalytic activity:ATP + biotin-carboxyl-carrier protein + CO(2) = ADP + phosphate + carboxybiotin-carboxyl-carrier protein.,cofactor:binds 2 manganese ions per subunit.,cofactor:biotin.,disease:Defects in ACACA are a cause of ACACA deficiency [MIM:200350]; also called ACAC or ACC deficiency. ACACA deficiency is an inborn error of de novo fatty acid synthesis. The disorder is associated with severe brain damage, persistent myopathy and poor growth.,enzyme regulation:By phosphorylation.,function:Catalyzes the rate-limiting reaction in the biogenesis of long-chain fatty acids. Carries out three functions: biotin carboxyl carrier protein, biotin carboxylase and carboxyltransferase.,online information:Acetyl-CoA carboxylase

Nanjing BYabscience technology Co.,Ltd



entry, pathway: Lipid metabolism; malonyl-CoA biosynthesis; malonyl-CoA from acetyl-CoA: st

Background

Acetyl-CoA carboxylase (ACC) is a complex multifunctional enzyme system. ACC is a biotin-containing enzyme which catalyzes the carboxylation of acetyl-CoA to malonyl-CoA, the rate-limiting step in fatty acid synthesis. There are two ACC forms, alpha and beta, encoded by two different genes. ACC-alpha is highly enriched in lipogenic tissues. The enzyme is under long term control at the transcriptional and translational levels and under short term regulation by the phosphorylation/dephosphorylation of targeted serine residues and by allosteric transformation by citrate or palmitoyl-CoA. Multiple alternatively spliced transcript variants divergent in the 5' sequence and encoding distinct isoforms have been found for this gene. [provided by RefSeq, Jul 2008],

matters needing attention

Avoid repeated freezing and thawing!

Usage suggestions

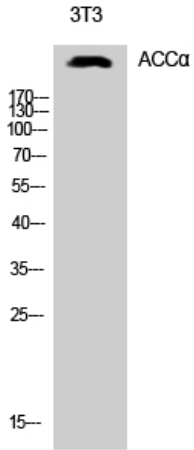
This product can be used in immunological reaction related experiments. For more information, please consult technical personnel.

Nanjing BYabscience technology Co.,Ltd

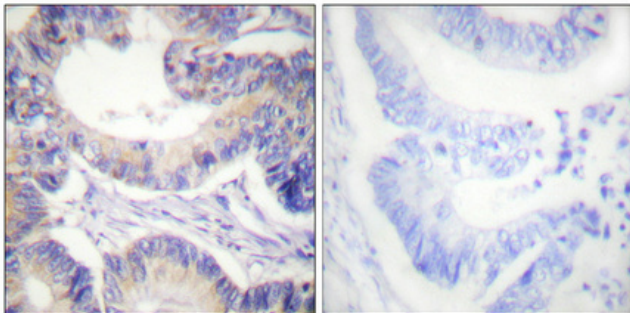
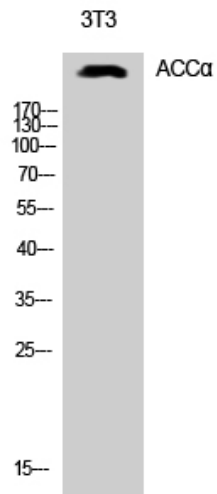


Products Images

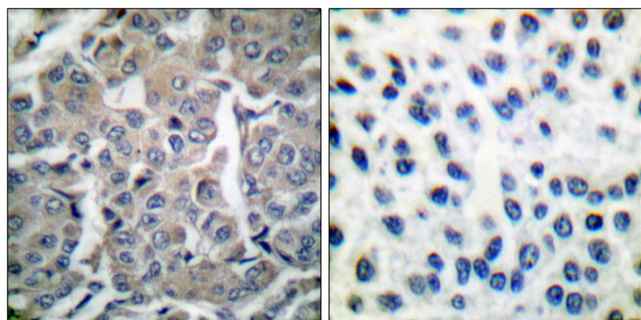
Western Blot analysis of 3T3 cells using ACC α Polyclonal Antibody



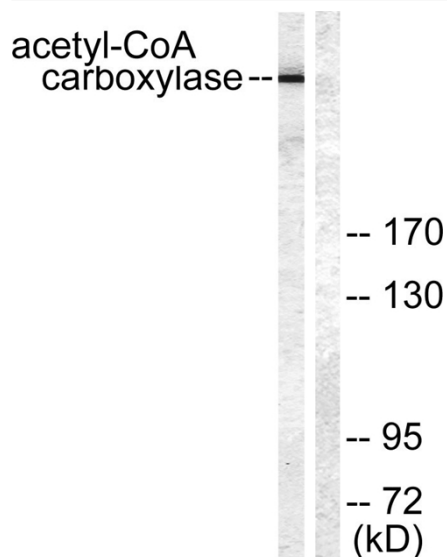
Western Blot analysis of NIH-3T3 cells using ACC α Polyclonal Antibody



Immunohistochemical analysis of paraffin-embedded Human colon cancer. Antibody was diluted at 1:100(4° overnight). High-pressure and temperature Tris-EDTA,pH8.0 was used for antigen retrieval. Negative contrl (right) obtained from antibody was pre-absorbed by immunogen peptide.



Immunohistochemistry analysis of paraffin-embedded human breast carcinoma tissue, using Acetyl-CoA Carboxylase Antibody. The picture on the right is blocked with the synthesized peptide.



Western blot analysis of lysates from NIH/3T3 cells, treated with PMA 125ng/ml 15', using Acetyl-CoA Carboxylase Antibody. The lane on the right is blocked with the synthesized peptide.