



# ABHD7 Polyclonal Antibody

Catalog No	BYab-02458
Isotype	IgG
Reactivity	Human;Mouse
Applications	WB;ELISA
Gene Name	EPHX4
Protein Name	Epoxide hydrolase 4
Immunogen	The antiserum was produced against synthesized peptide derived from human ABHD7. AA range:101-150
Specificity	ABHD7 Polyclonal Antibody detects endogenous levels of ABHD7 protein.
Formulation	Liquid in PBS containing 50% glycerol, 0.5% BSA and 0.02% sodium azide.
Source	Polyclonal, Rabbit,IgG
Purification	The antibody was affinity-purified from rabbit antiserum by affinity-chromatography using epitope-specific immunogen.
Dilution	Western Blot: 1/500 - 1/2000. ELISA: 1/40000. Not yet tested in other applications.
Concentration	1 mg/ml
Purity	≥90%
Storage Stability	-20°C/1 year
Synonyms	EPHX4; ABHD7; EPXHRP; Epoxide hydrolase 4; Abhydrolase domain-containing protein 7; Epoxide hydrolase-related protein
Observed Band	42kD
Cell Pathway	Membrane ; Single-pass type II membrane protein .
Tissue Specificity	
Function	
Background	The $\alpha/\beta$ hydrolase superfamily comprise diverse members that are involved in important biochemical processes and related to various diseases. They have unrelated sequences, various substrates, and different kinds of catalytic activities, yet they share the same canonical $\alpha/\beta$ hydrolase fold, which consists of an eight-stranded parallel $\alpha/\beta$ structure. They are also characterized by a catalytic triad composed of a histidine, an acid and a nucleophile. Members of this superfamily are often drug targets for treating diseases, such as diabetes, Alzheimer's disease, obesity and blood clotting disorders. The Ab hydrolase

Nanjing BYabscience technology Co.,Ltd



domain containing (ABHD) gene subfamily is comprised of 15 mostly uncharacterized members, most of which utilize a serine nucleophile to form the G-X-S-X-G nucleophile elbow. ABHD7 is a 362 amino acid single-pass type II membrane protein that belongs to the AB hydrolase superfamily and the Epoxide hydrolase family.

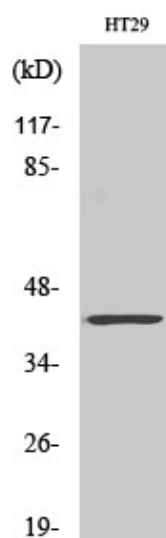
**matters needing attention**

Avoid repeated freezing and thawing!

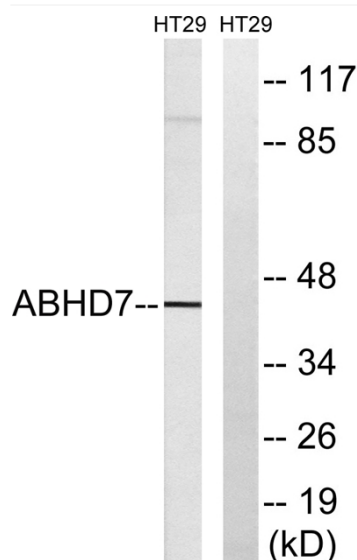
**Usage suggestions**

This product can be used in immunological reaction related experiments. For more information, please consult technical personnel.

## Products Images



Western Blot analysis of various cells using ABHD7 Polyclonal Antibody diluted at 1:500



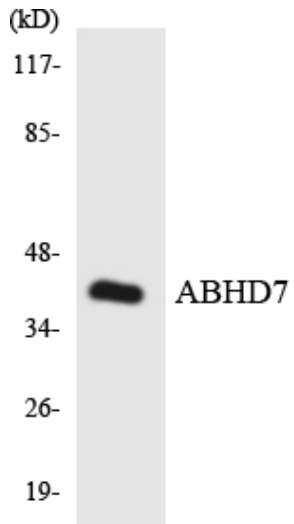
Western blot analysis of lysates from HT-29 cells, using ABHD7 Antibody. The lane on the right is blocked with the synthesized peptide.

Nanjing BYabscience technology Co.,Ltd

网址: [www.njbybio.com](http://www.njbybio.com)

官方热线: 025-5229-8998

监督电话: 15950492658



Western blot analysis of the lysates from HeLa cells using ABHD7 antibody.