



# PEPC (Phospho Ser15) Polyclonal Antibody

Catalog No	BYab-02443
Isotype	IgG
Reactivity	Plants
Applications	WB; ELISA;IHC
Gene Name	PGC
Protein Name	Gastricsin
Immunogen	Synthetic Peptide of PEPC (Phospho Ser15)
Specificity	The antibody detects endogenous PEPC (Phospho Ser15) protein.
Formulation	PBS, pH 7.4, containing 0.5%BSA, 0.02% sodium azide as Preservative and 50% Glycerol.
Source	Polyclonal, Rabbit,IgG
Purification	The antibody was affinity-purified from rabbit antiserum by affinity-chromatography using epitope-specific immunogen.
Dilution	WB 1:500-2000;IHC-p 1:50-300; ELISA 2000-20000
Concentration	1 mg/ml
Purity	≥90%
Storage Stability	-20°C/1 year
Synonyms	PGC; Gastricsin; Pepsinogen C
Observed Band	105-110kD
Cell Pathway	Secreted.
Tissue Specificity	Brain,Liver,Placenta,Stomach,
Function	catalytic activity:More restricted specificity than pepsin A, but shows preferential cleavage at Tyr-I-Xaa bonds. High activity on hemoglobin.,function:Hydrolyzes a variety of proteins.,similarity:Belongs to the peptidase A1 family.,
Background	This gene encodes an aspartic proteinase that belongs to the peptidase family A1. The encoded protein is a digestive enzyme that is produced in the stomach and constitutes a major component of the gastric mucosa. This protein is also secreted into the serum. This protein is synthesized as an inactive zymogen that includes a highly basic prosegment. This enzyme is converted into its active mature form at low pH by sequential cleavage of the prosegment that is carried out by the enzyme itself. Polymorphisms in this gene are associated with

Nanjing BYabscience technology Co.,Ltd



susceptibility to gastric cancers. Serum levels of this enzyme are used as a biomarker for certain gastric diseases including Helicobacter pylori related gastritis. Alternate splicing results in multiple transcript variants. A pseudogene of this gene is found on chromosome 1. [provided by RefSeq, Oct 2009],

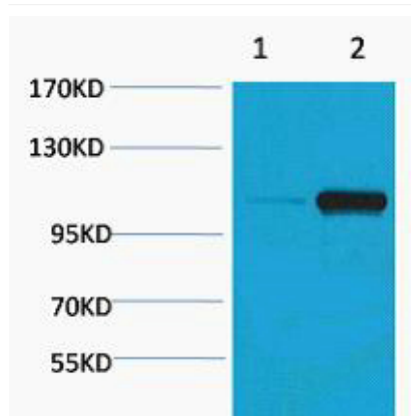
**matters needing attention**

Avoid repeated freezing and thawing!

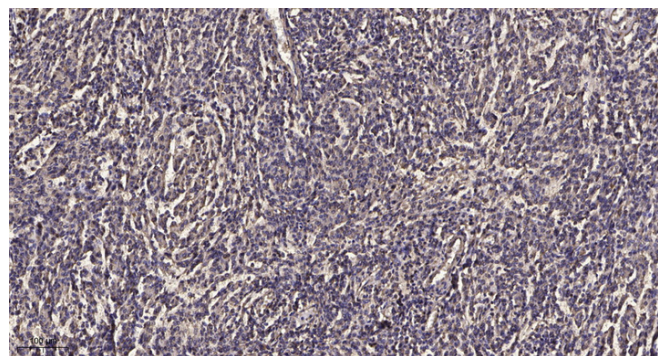
**Usage suggestions**

This product can be used in immunological reaction related experiments. For more information, please consult technical personnel.

## Products Images



Western blot analysis of Maize 1) Dark, 2) Light, diluted at 1:2000. Secondary antibody(catalog#:RS0002) was diluted at 1:20000



Immunohistochemical analysis of paraffin-embedded human meningioma. 1, Antibody was diluted at 1:200(4 ° overnight). 2, Tris-EDTA,pH9.0 was used for antigen retrieval. 3,Secondary antibody was diluted at 1:200(room temperature, 45min).