



Cleaved-MMP-27 (Y99) Polyclonal Antibody

Catalog No	BYab-02296
Isotype	IgG
Reactivity	Human;Monkey
Applications	WB;ELISA
Gene Name	MMP27
Protein Name	Matrix metalloproteinase-27
Immunogen	The antiserum was produced against synthesized peptide derived from human MMP27. AA range:80-129
Specificity	Cleaved-MMP-27 (Y99) Polyclonal Antibody detects endogenous levels of fragment of activated MMP-27 protein resulting from cleavage adjacent to Y99.
Formulation	Liquid in PBS containing 50% glycerol, 0.5% BSA and 0.02% sodium azide.
Source	Polyclonal, Rabbit,IgG
Purification	The antibody was affinity-purified from rabbit antiserum by affinity-chromatography using epitope-specific immunogen.
Dilution	Western Blot: 1/500 - 1/2000. ELISA: 1/10000. Not yet tested in other applications.
Concentration	1 mg/ml
Purity	≥90%
Storage Stability	-20°C/1 year
Synonyms	MMP27; Matrix metalloproteinase-27; MMP-27
Observed Band	48kD
Cell Pathway	Endoplasmic reticulum membrane; Peripheral membrane protein . Retained in the endoplasmic reticulum. .
Tissue Specificity	Expressed in B-cells (PubMed:14506071). Expressed in a subset of endometrial macrophages related to menstruation and in ovarian and peritoneal endometriotic lesions (at protein level)(PubMed:24810263).
Function	cofactor: Binds 2 zinc ions per subunit.,cofactor: Binds 4 calcium ions per subunit.,domain: The conserved cysteine present in the cysteine-switch motif binds the catalytic zinc ion, thus inhibiting the enzyme. The dissociation of the cysteine from the zinc ion upon the activation-peptide release activates the enzyme.,function: Matrix metalloproteinases degrade protein components of the extracellular matrix such as fibronectin, laminin, gelatins and/or collagens.,similarity: Belongs to the peptidase M10A family.,similarity: Contains 4 hemopexin-like domains.,tissue specificity: Expressed in B-cells.,

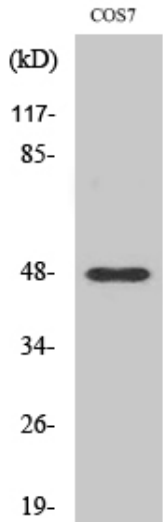
Nanjing BYabscience technology Co.,Ltd



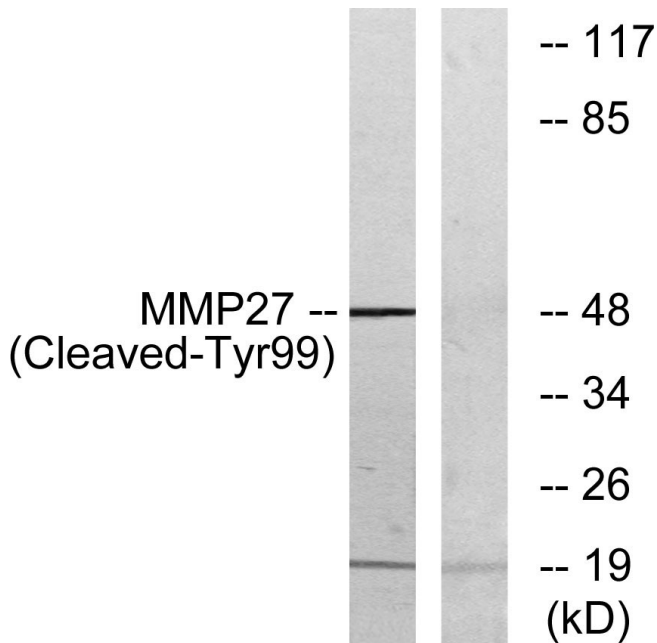
Background	Proteins of the matrix metalloproteinase (MMP) family are involved in the breakdown of extracellular matrix in normal physiological processes, such as embryonic development, reproduction, and tissue remodeling, as well as in disease processes, such as arthritis and metastasis. Most MMP's are secreted as inactive proproteins which are activated when cleaved by extracellular proteinases. [provided by RefSeq, Jul 2008],
matters needing attention	Avoid repeated freezing and thawing!
Usage suggestions	This product can be used in immunological reaction related experiments. For more information, please consult technical personnel.



Products Images



Western Blot analysis of various cells using
Cleaved-MMP-27 (Y99) Polyclonal Antibody



Western blot analysis of lysates from COS7 cells,
treated with etoposide 25uM 1h, using MMP27
(Cleaved-Tyr99) Antibody. The lane on the right is
blocked with the synthesized peptide.