



Cleaved-Cathepsin G (I21) Polyclonal Antibody

Catalog No	BYab-02285
Isotype	IgG
Reactivity	Human;Mouse;Rat
Applications	WB;ELISA
Gene Name	CTSG
Protein Name	Cathepsin G
Immunogen	The antiserum was produced against synthesized peptide derived from human CATG. AA range:2-51
Specificity	Cleaved-Cathepsin G (I21) Polyclonal Antibody detects endogenous levels of fragment of activated Cathepsin G protein resulting from cleavage adjacent to I21.
Formulation	Liquid in PBS containing 50% glycerol, 0.5% BSA and 0.02% sodium azide.
Source	Polyclonal, Rabbit,IgG
Purification	The antibody was affinity-purified from rabbit antiserum by affinity-chromatography using epitope-specific immunogen.
Dilution	Western Blot: 1/500 - 1/2000. ELISA: 1/20000. Not yet tested in other applications.
Concentration	1 mg/ml
Purity	≥90%
Storage Stability	-20°C/1 year
Synonyms	CTSG; Cathepsin G; CG
Observed Band	28+26kD
Cell Pathway	Cell membrane ; Peripheral membrane protein . Cytoplasmic granule . Secreted . Cytoplasm, cytosol . Lysosome . Nucleus . Secreted by activated neutrophils (PubMed:3390156). Detected in synovial fluid (PubMed:32144329). Localizes to lysosomes in B cells where it is not endogenously synthesized but is internalized from the cell membrane (PubMed:15100291). Localizes to the nucleus during apoptosis (PubMed:11259672). .
Tissue Specificity	Expressed in neutrophils (at protein level) (PubMed:3799965). Expressed in B cells (PubMed:15100291).
Function	catalytic activity:Specificity similar to chymotrypsin C.,enzyme regulation:Inhibited by soybean trypsin inhibitor, benzamidine, the synthetic peptide R13K, Z-Gly-Leu-Phe-CH ₂ Cl and phenylmethylsulfonyl fluoride. Inhibited by LPS from P.aeruginosa but not by LPS from S.minnesota.,function:Serine protease with trypsin- and chymotrypsin-like specificity. Has antibacterial activity against the Gram-negative bacterium P.aeruginosa, antibacterial activity is inhibited by LPS

Nanjing BYabscience technology Co.,Ltd



	from P.aeruginosa, Z-Gly-Leu-Phe-CH ₂ Cl and phenylmethylsulfonyl fluoride.,similarity:Belongs to the peptidase S1 family.,similarity:Contains 1 peptidase S1 domain.,
Background	The protein encoded by this gene, a member of the peptidase S1 protein family, is found in azurophil granules of neutrophilic polymorphonuclear leukocytes. The encoded protease has a specificity similar to that of chymotrypsin C, and may participate in the killing and digestion of engulfed pathogens, and in connective tissue remodeling at sites of inflammation. In addition, the encoded protein is antimicrobial, with bacteriocidal activity against S. aureus and N. gonorrhoeae. Transcript variants utilizing alternative polyadenylation signals exist for this gene. [provided by RefSeq, Sep 2014],
matters needing attention	Avoid repeated freezing and thawing!
Usage suggestions	This product can be used in immunological reaction related experiments. For more information, please consult technical personnel.

Nanjing BYabscience technology Co.,Ltd

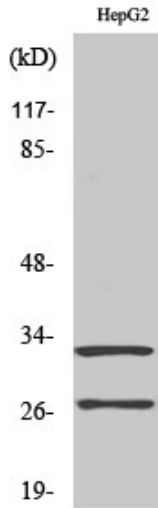
网址: www.njbybio.com

官方热线: 025-5229-8998

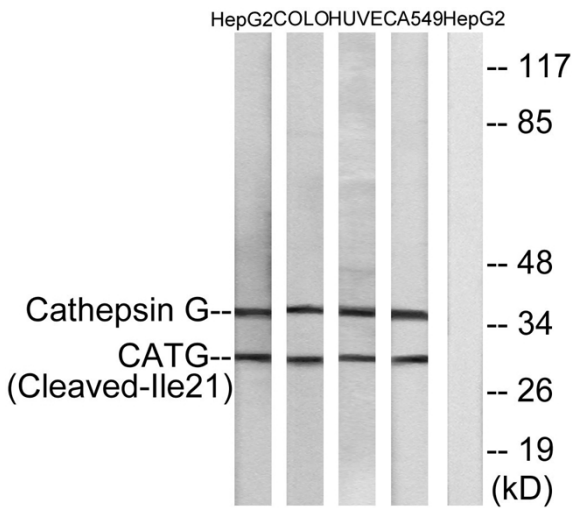
监督电话: 15950492658



Products Images



Western Blot analysis of various cells using
Cleaved-Cathepsin G (I21) Polyclonal Antibody



Western blot analysis of lysates from HepG2, COLO, HUVEC, and A549 cells, using CATG (Cleaved-Ile21) Antibody. The lane on the right is blocked with the synthesized peptide.