



ASCL1 Polyclonal Antibody

Catalog No	BYab-02263
Isotype	IgG
Reactivity	Human;Mouse;Rat
Applications	IHC;IF;ELISA
Gene Name	ASCL1 ASH1 BHLHA46 HASH1
Protein Name	Achaete-scute homolog 1 (ASH-1) (hASH1) (Class A basic helix-loop-helix protein 46) (bHLHa46)
Immunogen	Synthetic peptide from human protein at AA range: 190-236
Specificity	The antibody detects endogenous ASCL1
Formulation	Liquid in PBS containing 50% glycerol, 0.5% BSA and 0.02% sodium azide.
Source	Polyclonal, Rabbit,IgG
Purification	The antibody was affinity-purified from rabbit antiserum by affinity-chromatography using epitope-specific immunogen.
Dilution	IHC-p 1:50-200, ELISA 1:10000-20000. IF 1:50-200
Concentration	1 mg/ml
Purity	≥90%
Storage Stability	-20°C/1 year
Synonyms	Achaete-scute homolog 1 (ASH-1;hASH1;Class A basic helix-loop-helix protein 46;bHLHa46)
Observed Band	
Cell Pathway	Nucleus .
Tissue Specificity	Lung,Thyroid carcinoma,
Function	function:May play a role at early stages of development of specific neural lineages in most regions of the CNS, and of several lineages in the PNS. Essential for the generation of olfactory and autonomic neurons. Activates transcription by binding to the E box (5'-CANNTG-3').,similarity:Contains 1 basic helix-loop-helix (bHLH) domain.,subunit:Efficient DNA binding requires dimerization with another bHLH protein. Forms a heterodimer with TCF3.,
Background	achaete-scute family bHLH transcription factor 1(ASCL1) Homo sapiens This gene encodes a member of the basic helix-loop-helix (BHLH) family of transcription factors. The protein activates transcription by binding to the E box (5''-CANNTG-3'). Dimerization with other BHLH proteins is required

Nanjing BYabscience technology Co.,Ltd



for efficient DNA binding. This protein plays a role in the neuronal commitment and differentiation and in the generation of olfactory and autonomic neurons. Mutations in this gene may contribute to the congenital central hypoventilation syndrome (CCHS) phenotype in rare cases. [provided by RefSeq, Jul 2008],

matters needing attention

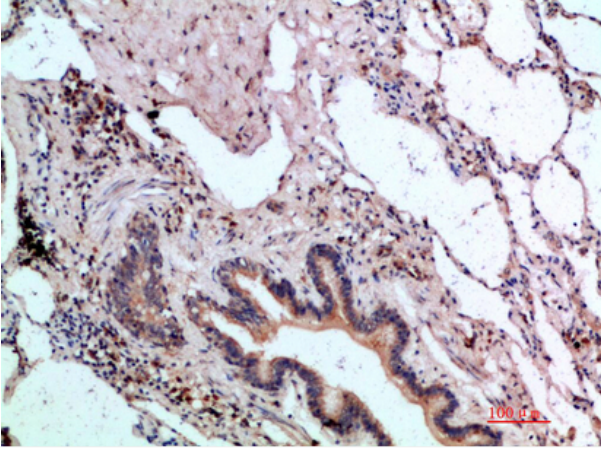
Avoid repeated freezing and thawing!

Usage suggestions

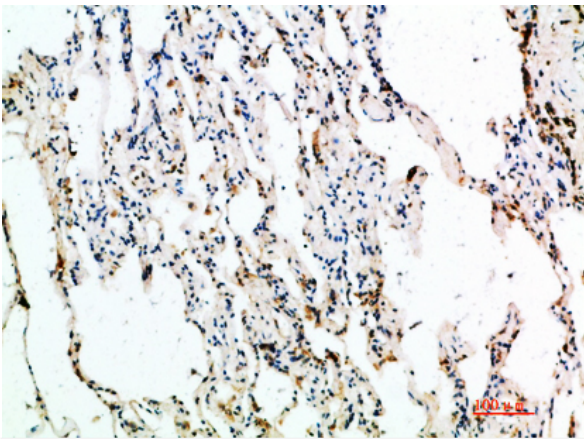
This product can be used in immunological reaction related experiments. For more information, please consult technical personnel.



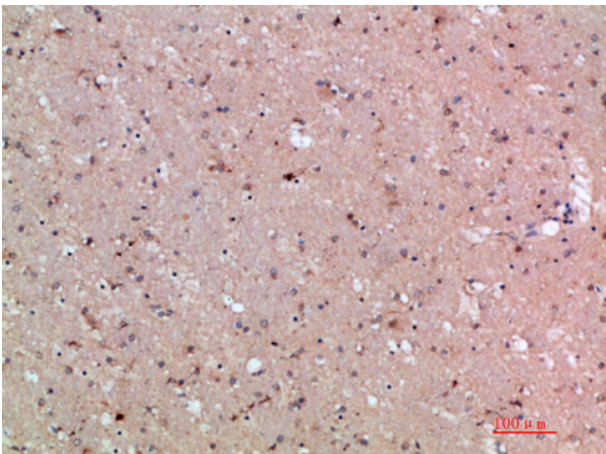
Products Images



Immunohistochemical analysis of paraffin-embedded human-lung, antibody was diluted at 1:200



Immunohistochemical analysis of paraffin-embedded human-lung, antibody was diluted at 1:200



Immunohistochemical analysis of paraffin-embedded human-brain, antibody was diluted at 1:200