



GPR158 Polyclonal Antibody

Catalog No	BYab-13313
Isotype	IgG
Reactivity	Human;Mouse
Applications	WB;IHC;IF;ELISA
Gene Name	GPR158
Protein Name	Probable G-protein coupled receptor 158
Immunogen	The antiserum was produced against synthesized peptide derived from human GPR158. AA range:1-50
Specificity	GPR158 Polyclonal Antibody detects endogenous levels of GPR158 protein.
Formulation	Liquid in PBS containing 50% glycerol, 0.5% BSA and 0.02% sodium azide.
Source	Polyclonal, Rabbit,IgG
Purification	The antibody was affinity-purified from rabbit antiserum by affinity-chromatography using epitope-specific immunogen.
Dilution	Western Blot: 1/500 - 1/2000. Immunohistochemistry: 1/100 - 1/300. Immunofluorescence: 1/200 - 1/1000. ELISA: 1/5000. Not yet tested in other applications.
Concentration	1 mg/ml
Purity	≥90%
Storage Stability	-20°C/1 year
Synonyms	GPR158; KIAA1136; Probable G-protein coupled receptor 158
Observed Band	150kD
Cell Pathway	Cell membrane; Multi-pass membrane protein.
Tissue Specificity	Brain,
Function	function:Orphan receptor.,similarity:Belongs to the G-protein coupled receptor 3 family.,
Background	function:Orphan receptor.,similarity:Belongs to the G-protein coupled receptor 3 family.,
matters needing attention	Avoid repeated freezing and thawing!

Nanjing BYabscience technology Co.,Ltd

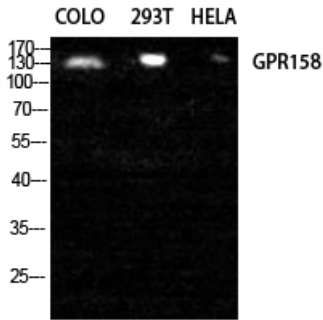
网址: www.njbybio.com

官方热线: 025-5229-8998

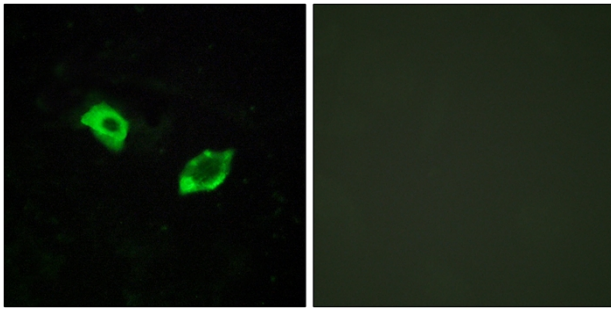
监督电话: 15950492658

**Usage suggestions**

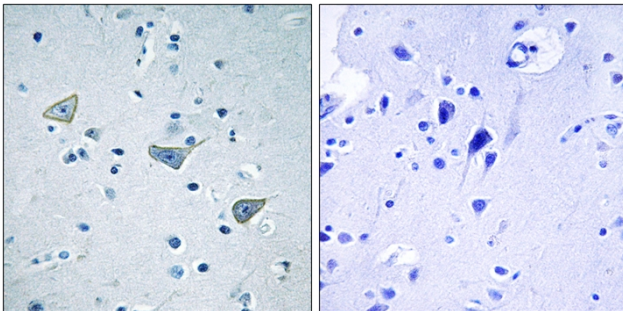
This product can be used in immunological reaction related experiments. For more information, please consult technical personnel.

Products Images

Western Blot analysis of COLO 293T HELA cells using GPR158 Polyclonal Antibody diluted at 1:2000

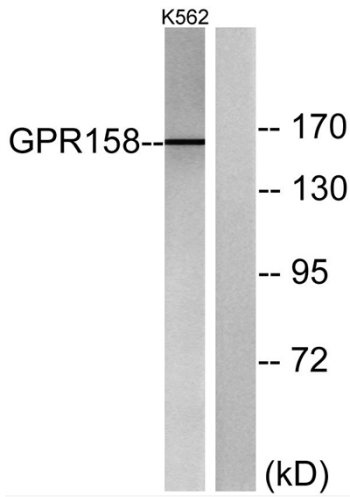


Immunofluorescence analysis of HUVEC cells, using GPR158 Antibody. The picture on the right is blocked with the synthesized peptide.

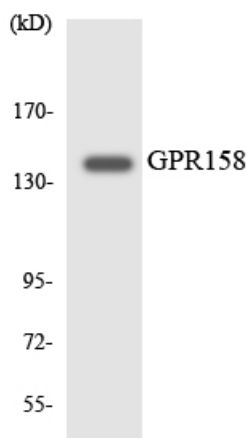


Immunohistochemistry analysis of paraffin-embedded human brain tissue, using GPR158 Antibody. The picture on the right is blocked with the synthesized peptide.

Nanjing BYabscience technology Co.,Ltd



Western blot analysis of lysates from K562 cells, using GPR158 Antibody. The lane on the right is blocked with the synthesized peptide.



Western blot analysis of the lysates from HeLa cells using GPR158 antibody.