



# GPR126 Polyclonal Antibody

<b>Catalog No</b>	BYab-13295
<b>Isotype</b>	IgG
<b>Reactivity</b>	Human;Rat;Mouse;
<b>Applications</b>	WB;IHC;IF;ELISA
<b>Gene Name</b>	GPR126
<b>Protein Name</b>	G-protein coupled receptor 126
<b>Immunogen</b>	The antiserum was produced against synthesized peptide derived from human GPR126. AA range:431-480
<b>Specificity</b>	GPR126 Polyclonal Antibody detects endogenous levels of GPR126 protein.
<b>Formulation</b>	Liquid in PBS containing 50% glycerol, 0.5% BSA and 0.02% sodium azide.
<b>Source</b>	Polyclonal, Rabbit,IgG
<b>Purification</b>	The antibody was affinity-purified from rabbit antiserum by affinity-chromatography using epitope-specific immunogen.
<b>Dilution</b>	Western Blot: 1/500 - 1/2000. Immunohistochemistry: 1/100 - 1/300. Immunofluorescence: 1/200 - 1/1000. ELISA: 1/5000. Not yet tested in other applications.
<b>Concentration</b>	1 mg/ml
<b>Purity</b>	≥90%
<b>Storage Stability</b>	-20°C/1 year
<b>Synonyms</b>	GPR126; DREG; VIGR; G-protein coupled receptor 126; Developmentally regulated G-protein-coupled receptor; Vascular inducible G protein-coupled receptor
<b>Observed Band</b>	145kD
<b>Cell Pathway</b>	Cell membrane ; Multi-pass membrane protein . Detected on the cell surface of activated but not resting umbilical vein. .
<b>Tissue Specificity</b>	Expressed in placenta and to a lower extent in pancreas and liver. Detected in aortic endothelial cells but not in skin microvascular endothelial cells.
<b>Function</b>	function:Orphan receptor.,polymorphism:Genetic variations in GPR126 influences stature as a quantitative trait (STQTL) [MIM:606255]. Adult height is an easily observable and highly heritable complex continuous trait. Because of this, it is a model trait for studying genetic influence on quantitative traits.,similarity:Belongs to the G-protein coupled receptor 2 family. LN-TM7 subfamily.,similarity:Contains 1 CUB domain.,similarity:Contains 1 GPS domain.,similarity:Contains 1 pentaxin domain.,

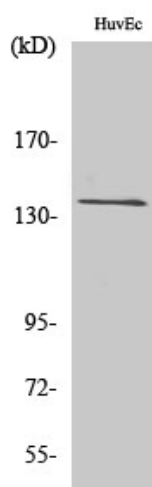
**Nanjing BYabscience technology Co.,Ltd**



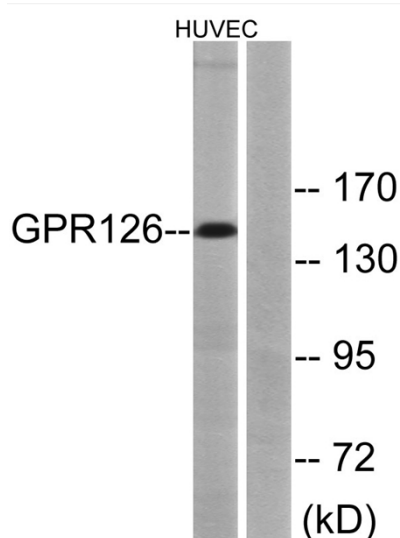
Background	This gene, which is upregulated in human umbilical vein endothelial cells, encodes a G protein-coupled receptor. Variations in this gene can affect a person's stature. Multiple transcript variants encoding different proteins have been found for this gene. [provided by RefSeq, Mar 2009],
matters needing attention	Avoid repeated freezing and thawing!
Usage suggestions	This product can be used in immunological reaction related experiments. For more information, please consult technical personnel.



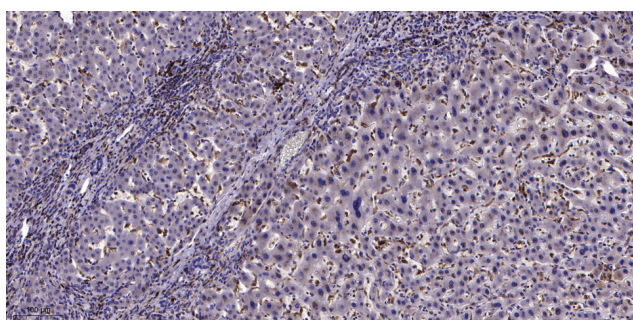
## Products Images



Western Blot analysis of various cells using GPR126 Polyclonal Antibody diluted at 1:500



Western blot analysis of lysates from HUVEC cells, using GPR126 Antibody. The lane on the right is blocked with the synthesized peptide.



Immunohistochemical analysis of paraffin-embedded human liver cancer. 1, Antibody was diluted at 1:200(4° overnight). 2, Tris-EDTA,pH9.0 was used for antigen retrieval. 3,Secondary antibody was diluted at 1:200(room temperature, 45min).

**Nanjing BYabs science technology Co.,Ltd**

网址: [www.njbybio.com](http://www.njbybio.com)

官方热线: 025-5229-8998

监督电话: 15950492658