



EP3 Polyclonal Antibody

Catalog No	BYab-13215
Isotype	IgG
Reactivity	Human;Rat;Mouse;
Applications	WB;IF;ELISA
Gene Name	PTGER3
Protein Name	Prostaglandin E2 receptor EP3 subtype
Immunogen	The antiserum was produced against synthesized peptide derived from human PTGER3. AA range:16-65
Specificity	EP3 Polyclonal Antibody detects endogenous levels of EP3 protein.
Formulation	Liquid in PBS containing 50% glycerol, 0.5% BSA and 0.02% sodium azide.
Source	Polyclonal, Rabbit,IgG
Purification	The antibody was affinity-purified from rabbit antiserum by affinity-chromatography using epitope-specific immunogen.
Dilution	Western Blot: 1/500 - 1/2000. Immunofluorescence: 1/200 - 1/1000. ELISA: 1/10000. Not yet tested in other applications.
Concentration	1 mg/ml
Purity	≥90%
Storage Stability	-20°C/1 year
Synonyms	PTGER3; Prostaglandin E2 receptor EP3 subtype; PGE receptor EP3 subtype; PGE2 receptor EP3 subtype; PGE2-R; Prostanoid EP3 receptor
Observed Band	43kD
Cell Pathway	Cell membrane ; Multi-pass membrane protein .
Tissue Specificity	Detected in kidney (PubMed:8117308, PubMed:8135729). Expressed in small intestine, heart, pancreas, gastric fundic mucosa, mammary artery and pulmonary vessels.
Function	alternative products:Additional isoforms seem to exist,function:Receptor for prostaglandin E2 (PGE2); the EP3 receptor may be involved in inhibition of gastric acid secretion, modulation of neurotransmitter release in central and peripheral neurons, inhibition of sodium and water reabsorption in kidney tubulus and contraction in uterine smooth muscle. The activity of this receptor can couple to both the inhibition of adenylate cyclase mediated by G-I proteins, and to an elevation of intracellular calcium. The various isoforms have identical ligand binding properties but can interact with different second messenger systems.,similarity:Belongs to the G-protein coupled receptor 1 family.,tissue

Nanjing BYabscience technology Co.,Ltd



specificity: Expressed in small intestine, heart, pancreas, gastric fundic mucosa, mammary artery and pulmonary vessels.,

Background

The protein encoded by this gene is a member of the G-protein coupled receptor family. This protein is one of four receptors identified for prostaglandin E2 (PGE2). This receptor may have many biological functions, which involve digestion, nervous system, kidney reabsorption, and uterine contraction activities. Studies of the mouse counterpart suggest that this receptor may also mediate adrenocorticotrophic hormone response as well as fever generation in response to exogenous and endogenous stimuli. Multiple transcript variants encoding different isoforms have been found for this gene. [provided by RefSeq, Aug 2009],

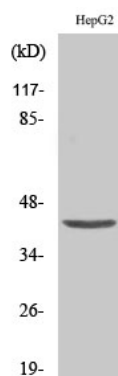
matters needing attention

Avoid repeated freezing and thawing!

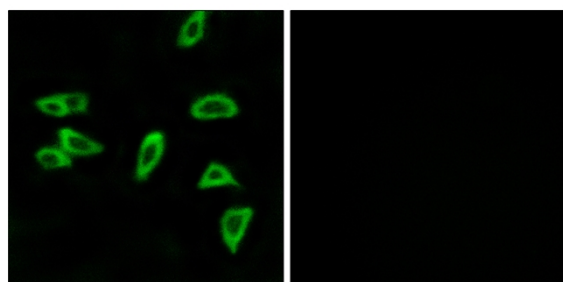
Usage suggestions

This product can be used in immunological reaction related experiments. For more information, please consult technical personnel.

Products Images



Western Blot analysis of various cells using EP3 Polyclonal Antibody



Immunofluorescence analysis of LOVO cells, using PTGER3 Antibody. The picture on the right is blocked with the synthesized peptide.