



AR- β 2 (phospho Ser355/S356) Polyclonal Antibody

Catalog No	BYab-13039
Isotype	IgG
Reactivity	Human;Mouse;Rat;Monkey
Applications	WB;IHC;IF;ELISA
Gene Name	ADRB2
Protein Name	Beta-2 adrenergic receptor
Immunogen	The antiserum was produced against synthesized peptide derived from human Adrenergic Receptor B2 around the phosphorylation site of Ser355 and Ser356. AA range:331-380
Specificity	Phospho-AR- β 2 (S355/S356) Polyclonal Antibody detects endogenous levels of AR- β 2 protein only when phosphorylated at S355/S356.
Formulation	Liquid in PBS containing 50% glycerol, 0.5% BSA and 0.02% sodium azide.
Source	Polyclonal, Rabbit,IgG
Purification	The antibody was affinity-purified from rabbit antiserum by affinity-chromatography using epitope-specific immunogen.
Dilution	WB: 1/500 - 1/2000. IHC: 1/100 - 1/300. ELISA: 1/10000.. IF 1:50-200
Concentration	1 mg/ml
Purity	$\geq 90\%$
Storage Stability	-20°C/1 year
Synonyms	ADRB2; ADRB2R; B2AR; Beta-2 adrenergic receptor; Beta-2 adrenoreceptor; Beta-2 adrenoceptor
Observed Band	47kD
Cell Pathway	Cell membrane ; Multi-pass membrane protein . Early endosome . Golgi apparatus . Colocalizes with VHL at the cell membrane (PubMed:19584355). Activated receptors are internalized into endosomes prior to their degradation in lysosomes (PubMed:20559325). Activated receptors are also detected within the Golgi apparatus (PubMed:27481942). .
Tissue Specificity	Blood,Brain,Fetal brain,Heart,Leukocyte,Prostate,Thyroid,
Function	disease:Polymorphic forms of ADRB2 could impart some form of nocturnal asthma.,function:Beta-adrenergic receptors mediate the catecholamine-induced activation of adenylate cyclase through the action of G proteins. The beta-2-adrenergic receptor binds epinephrine with an approximately 30-fold greater affinity than it does norepinephrine.,PTM:Palmitoylated; may reduce

Nanjing BYabscience technology Co.,Ltd



accessibility of Ser-345 and Ser-346 by anchoring Cys-341 to the plasma membrane. Agonist stimulation promotes depalmitoylation and further allows Ser-345 and Ser-346 phosphorylation.,PTM:Phosphorylated by PKA and BARK upon agonist stimulation, which mediates homologous desensitization of the receptor. PKA-mediated phosphorylation seems to facilitate phosphorylation by BARK. Phosphorylated upon DNA damage, probably by ATM or ATR.,PTM:Phosphorylation of Tyr-141 is induced by insulin and leads to supersensitization of the recep

Background

This gene encodes beta-2-adrenergic receptor which is a member of the G protein-coupled receptor superfamily. This receptor is directly associated with one of its ultimate effectors, the class C L-type calcium channel Ca(V)1.2. This receptor-channel complex also contains a G protein, an adenylyl cyclase, cAMP-dependent kinase, and the counterbalancing phosphatase, PP2A. The assembly of the signaling complex provides a mechanism that ensures specific and rapid signaling by this G protein-coupled receptor. This gene is intronless. Different polymorphic forms, point mutations, and/or downregulation of this gene are associated with nocturnal asthma, obesity and type 2 diabetes. [provided by RefSeq, Jul 2008],

matters needing attention

Avoid repeated freezing and thawing!

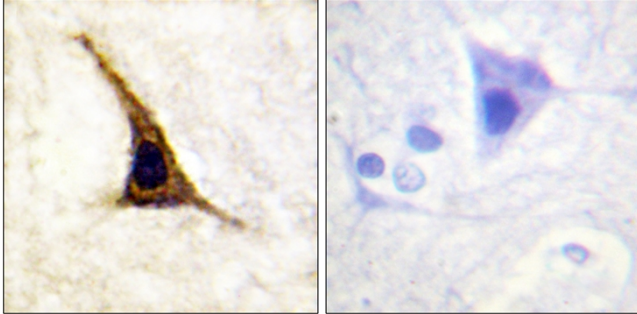
Usage suggestions

This product can be used in immunological reaction related experiments. For more information, please consult technical personnel.

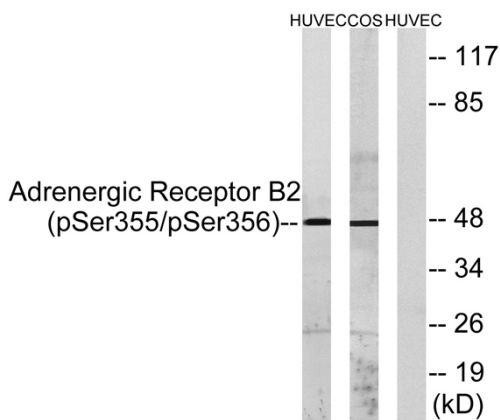
Nanjing BYabscience technology Co.,Ltd



Products Images



Immunohistochemistry analysis of paraffin-embedded human brain, using Adrenergic Receptor B2 (Phospho-Ser355+Ser356) Antibody. The picture on the right is blocked with the phospho peptide.



Western blot analysis of lysates from HUVEC cells treated with serum 20% 15' and COS7 cells treated with serum 20% 15', using Adrenergic Receptor B2 (Phospho-Ser355+Ser356) Antibody. The lane on the right is blocked with the phospho peptide.