



V1RL3 Polyclonal Antibody

Catalog No	BYab-12837
Isotype	IgG
Reactivity	Human;Rat;Mouse;
Applications	WB;IF;ELISA
Gene Name	VN1R3
Protein Name	Vomer nasal type-1 receptor 3
Immunogen	The antiserum was produced against synthesized peptide derived from human VN1R3. AA range:129-178
Specificity	V1RL3 Polyclonal Antibody detects endogenous levels of V1RL3 protein.
Formulation	Liquid in PBS containing 50% glycerol, 0.5% BSA and 0.02% sodium azide.
Source	Polyclonal, Rabbit,IgG
Purification	The antibody was affinity-purified from rabbit antiserum by affinity-chromatography using epitope-specific immunogen.
Dilution	Western Blot: 1/500 - 1/2000. Immunofluorescence: 1/200 - 1/1000. ELISA: 1/5000. Not yet tested in other applications.
Concentration	1 mg/ml
Purity	≥90%
Storage Stability	-20°C/1 year
Synonyms	VN1R3; V1RL3; FKSG46; Vomer nasal type-1 receptor 3; V1r-like receptor 3
Observed Band	35kD
Cell Pathway	Cell membrane; Multi-pass membrane protein.
Tissue Specificity	
Function	function:Putative pheromone receptor.,miscellaneous:The gorilla and orangutan orthologous proteins do not exist, their genes are pseudogenes.,online information:No one nose - Issue 61 of August 2005,polymorphism:There seems to be a deletion in the gene coding for this protein in about 98% of the population.,similarity:Belongs to the G-protein coupled receptor 1 family.,
Background	function:Putative pheromone receptor.,miscellaneous:The gorilla and orangutan orthologous proteins do not exist, their genes are pseudogenes.,online information:No one nose - Issue 61 of August 2005,polymorphism:There seems to be a deletion in the gene coding for this protein in about 98% of the population.,similarity:Belongs to the G-protein coupled receptor 1 family.,

Nanjing BYabscience technology Co.,Ltd



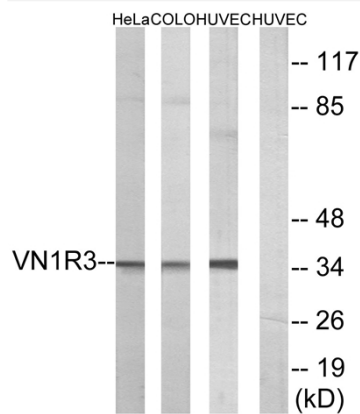
matters needing attention

Avoid repeated freezing and thawing!

Usage suggestions

This product can be used in immunological reaction related experiments. For more information, please consult technical personnel.

Products Images



Western blot analysis of lysates from HUVEC, HeLa, and COLO cells, using VN1R3 Antibody. The lane on the right is blocked with the synthesized peptide.