



# SR-2A Polyclonal Antibody

|                           |   |
|---------------------------|---|
| <b>Catalog No</b>         | BYab-12814  |
| <b>Isotype</b>            | IgG   |
| <b>Reactivity</b>         | Human;Rat;Mouse;  |
| <b>Applications</b>       | IHC;IF;ELISA  |
| <b>Gene Name</b>          | HTR2A   |
| <b>Protein Name</b>       | 5-hydroxytryptamine receptor 2A   |
| <b>Immunogen</b>          | The antiserum was produced against synthesized peptide derived from human 5-HT-2A. AA range:422-471   |
| <b>Specificity</b>        | SR-2A Polyclonal Antibody detects endogenous levels of SR-2A protein.   |
| <b>Formulation</b>        | Liquid in PBS containing 50% glycerol, 0.5% BSA and 0.02% sodium azide.   |
| <b>Source</b>             | Polyclonal, Rabbit,IgG  |
| <b>Purification</b>       | The antibody was affinity-purified from rabbit antiserum by affinity-chromatography using epitope-specific immunogen.   |
| <b>Dilution</b>           | Immunohistochemistry: 1/100 - 1/300. Immunofluorescence: 1/200 - 1/1000. ELISA: 1/5000. Not yet tested in other applications.   |
| <b>Concentration</b>      | 1 mg/ml   |
| <b>Purity</b>             | ≥90%  |
| <b>Storage Stability</b>  | -20°C/1 year  |
| <b>Synonyms</b>           | HTR2A; HTR2; 5-hydroxytryptamine receptor 2A; 5-HT-2; 5-HT-2A; Serotonin receptor 2A  |
| <b>Observed Band</b>      |   |
| <b>Cell Pathway</b>       | Cell membrane ; Multi-pass membrane protein . Cell projection, dendrite . Cell projection, axon . Cytoplasmic vesicle . Membrane, caveola . Cell junction, synapse, presynapse .  |
| <b>Tissue Specificity</b> | Detected in brain cortex (at protein level). Detected in blood platelets.   |
| <b>Function</b>           | domain:The PDZ domain-binding motif is involved in the interaction with INADL, CASK, APBA1, DLG1 and DLG4.,function:This is one of the several different receptors for 5-hydroxytryptamine (serotonin), a biogenic hormone that functions as a neurotransmitter, a hormone, and a mitogen. This receptor mediates its action by association with G proteins that activate a phosphatidylinositol-calcium second messenger system. This receptor is involved in tracheal smooth muscle contraction, bronchoconstriction, and control of aldosterone production.,online information:The Singapore human mutation and polymorphism database,similarity:Belongs to the G-protein coupled receptor 1 family.,subcellular |

**Nanjing BYabscience technology Co.,Ltd**



location:Localizes to the post-synaptic thickening of axo-dendritic synapses.,subunit:Interacts with MPDZ and INADL. May interact with MPP3, PRDX6, DLG4, DLG1, CASK, APBA1 and MAGI2.,

### Background

This gene encodes one of the receptors for serotonin, a neurotransmitter with many roles. Mutations in this gene are associated with susceptibility to schizophrenia and obsessive-compulsive disorder, and are also associated with response to the antidepressant citalopram in patients with major depressive disorder (MDD). MDD patients who also have a mutation in intron 2 of this gene show a significantly reduced response to citalopram as this antidepressant downregulates expression of this gene. Multiple transcript variants encoding different isoforms have been found for this gene. [provided by RefSeq, Sep 2009],

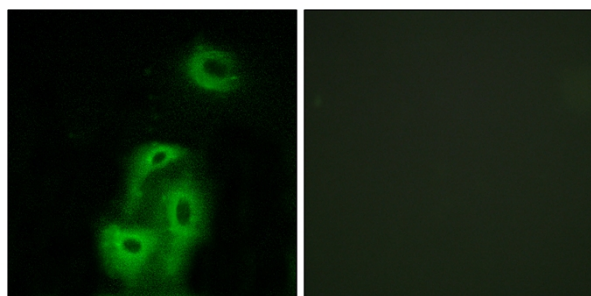
### matters needing attention

Avoid repeated freezing and thawing!

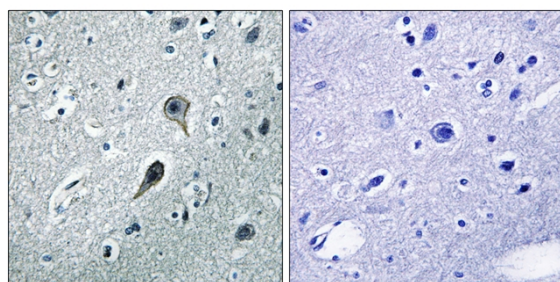
### Usage suggestions

This product can be used in immunological reaction related experiments. For more information, please consult technical personnel.

## Products Images



Immunofluorescence analysis of A549 cells, using 5-HT-2A Antibody. The picture on the right is blocked with the synthesized peptide.



Immunohistochemistry analysis of paraffin-embedded human brain tissue, using 5-HT-2A Antibody. The picture on the right is blocked with the synthesized peptide.

**Nanjing BYabscience technology Co.,Ltd**

网址: [www.njbybio.com](http://www.njbybio.com)

官方热线: 025-5229-8998

监督电话: 15950492658