



RIAM Polyclonal Antibody

Catalog No	BYab-12799
Isotype	IgG
Reactivity	Human;Rat;Mouse;
Applications	WB;IHC
Gene Name	APBB1IP
Protein Name	Amyloid beta A4 precursor protein-binding family B member 1-interacting protein
Immunogen	Synthesized peptide derived from RIAM . at AA range: 430-510
Specificity	RIAM Polyclonal Antibody detects endogenous levels of RIAM protein.
Formulation	Liquid in PBS containing 50% glycerol, 0.5% BSA and 0.02% sodium azide.
Source	Polyclonal, Rabbit,IgG
Purification	The antibody was affinity-purified from rabbit antiserum by affinity-chromatography using epitope-specific immunogen.
Dilution	WB 1:500-2000;IHC-p 1:50-300
Concentration	1 mg/ml
Purity	≥90%
Storage Stability	-20°C/1 year
Synonyms	APBB1IP; PREL1; RARP1; RIAM; Amyloid beta A4 precursor protein-binding family B member 1-interacting protein; APBB1-interacting protein 1; Proline-rich EVH1 ligand 1; PREL-1; Proline-rich protein 73; Rap1-GTP-interacting adapter molecule; R
Observed Band	73kD
Cell Pathway	Cell membrane ; Peripheral membrane protein . Cell projection, lamellipodium . Cell junction, focal adhesion . Cytoplasm, cytoskeleton . Colocalizes with ENA/VASP proteins at lamellipodia tips and focal adhesions, and F-actin at the leading edge. At the membrane surface, associates, via the PH domain, preferentially with the inositol phosphates, PtdIns(5)P and PtdIns(3)P. This binding appears to be necessary for the efficient interaction of the RA domain to Ras-GTPases (By similarity). .
Tissue Specificity	Widely expressed with high expression in thymus, spleen, lymph node, bone marrow and peripheral leukocytes.
Function	domain:The two Pro-rich regions are required for the suppression of AP1 transcription activity.,function:Appears to function in the signal transduction from Ras activation to actin cytoskeletal remodeling. Suppresses insulin-induced

Nanjing BYabscience technology Co.,Ltd



promoter activities through AP1 and SRE. Mediates Rap1-induced adhesion.,induction:Induced by all-trans-retinoic acid.,similarity:Belongs to the MRL family.,similarity:Contains 1 PH domain.,similarity:Contains 1 Ras-associating domain.,subcellular location:Colocalizes with ENA/VASP proteins at lamellipodia tips and focal adhesions, and F-actin at the leading edge. At the membrane surface, associates, via the PH domain, preferentially with the inositol phosphates, PtdIns(5)P and PtdIns(3)P. This binding appears to be necessary for the efficient interaction of the RA domain to Ras-GTPases.,subunit:Interacts, through the N-terminal Pro-rich region, with the WW d

Background

domain:The two Pro-rich regions are required for the suppression of AP1 transcription activity.,function:Appears to function in the signal transduction from Ras activation to actin cytoskeletal remodeling. Suppresses insulin-induced promoter activities through AP1 and SRE. Mediates Rap1-induced adhesion.,induction:Induced by all-trans-retinoic acid.,similarity:Belongs to the MRL family.,similarity:Contains 1 PH domain.,similarity:Contains 1 Ras-associating domain.,subcellular location:Colocalizes with ENA/VASP proteins at lamellipodia tips and focal adhesions, and F-actin at the leading edge. At the membrane surface, associates, via the PH domain, preferentially with the inositol phosphates, PtdIns(5)P and PtdIns(3)P. This binding appears to be necessary for the efficient interaction of the RA domain to Ras-GTPases.,subunit:Interacts, through the N-terminal Pro-rich region, with the WW domain of APBB1. Interacts with RAP1A, PFN1, VASP and ENAH.,tissue specificity:Widely expressed with high expression in thymus, spleen, lymph node, bone marrow and peripheral leukocytes.,

matters needing attention

Avoid repeated freezing and thawing!

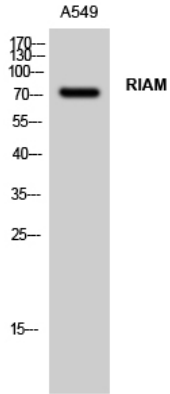
Usage suggestions

This product can be used in immunological reaction related experiments. For more information, please consult technical personnel.

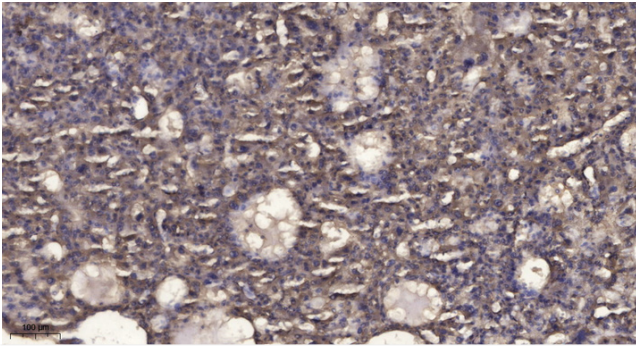
Nanjing BYabscience technology Co.,Ltd



Products Images



Western Blot analysis of A549 cells using RIAM Polyclonal Antibody



Immunohistochemical analysis of paraffin-embedded human liver cancer. 1, Antibody was diluted at 1:200(4° overnight). 2, Tris-EDTA,pH9.0 was used for antigen retrieval. 3,Secondary antibody was diluted at 1:200(room temperature, 45min).