



# Neuroglycan C Polyclonal Antibody

<b>Catalog No</b>	BYab-12759
<b>Isotype</b>	IgG
<b>Reactivity</b>	Human;Mouse;Rat
<b>Applications</b>	WB;IHC
<b>Gene Name</b>	CSPG5
<b>Protein Name</b>	Chondroitin sulfate proteoglycan 5
<b>Immunogen</b>	The antiserum was produced against synthesized peptide derived from human CSPG5. AA range:211-260
<b>Specificity</b>	Neuroglycan C Polyclonal Antibody detects endogenous levels of Neuroglycan C protein.
<b>Formulation</b>	Liquid in PBS containing 50% glycerol, 0.5% BSA and 0.02% sodium azide.
<b>Source</b>	Polyclonal, Rabbit,IgG
<b>Purification</b>	The antibody was affinity-purified from rabbit antiserum by affinity-chromatography using epitope-specific immunogen.
<b>Dilution</b>	WB 1:500-2000;IHC-p 1:50-300
<b>Concentration</b>	1 mg/ml
<b>Purity</b>	≥90%
<b>Storage Stability</b>	-20°C/1 year
<b>Synonyms</b>	CSPG5; CALEB; NGC; Chondroitin sulfate proteoglycan 5; Acidic leucine-rich EGF-like domain-containing brain protein; Neuroglycan C
<b>Observed Band</b>	60kD
<b>Cell Pathway</b>	Cell membrane ; Single-pass type I membrane protein . Cell junction, synapse, synaptic cell membrane ; Single-pass type I membrane protein . Endoplasmic reticulum membrane ; Single-pass type I membrane protein . Golgi apparatus membrane ; Single-pass type I membrane protein . Cell surface . In neurons, localizes to synaptic junctions. Also detected in the endoplasmic reticulum and the Golgi. Partially enriched in lipid rafts. .
<b>Tissue Specificity</b>	Restricted to brain (at protein level).
<b>Function</b>	developmental stage:Expressed in brain of 3 months, 5 and 10-year-old individuals.,function:May function as a growth and differentiation factor involved in neuritogenesis. May induce ERBB3 activation.,miscellaneous:Different forms of various molecular weight have been observed. Such forms are possibly due to different levels of glycosylation, phosphorylation and/or protein cleavage.,PTM:N-glycosylated.,PTM:O-glycosylated; contains chondroitin sulfate

**Nanjing BYabscience technology Co.,Ltd**



glycans. Part-time proteoglycan, expressed in part as a proteoglycan exhibiting chondroitin sulfate glycans and in part as a non-proteoglycan form. The relative amount of both forms depends on tissues and tissues maturation.,PTM:Phosphorylated; in intracellular and extracellular parts.,similarity:Contains 1 EGF-like domain.,subcellular location:In neurons, localizes to synaptic junctions (By similarity). Also detected in the endoplasmic reticulum.

#### Background

The protein encoded by this gene is a proteoglycan that may function as a neural growth and differentiation factor. Several transcript variants encoding different isoforms have been found for this gene. [provided by RefSeq, May 2011],

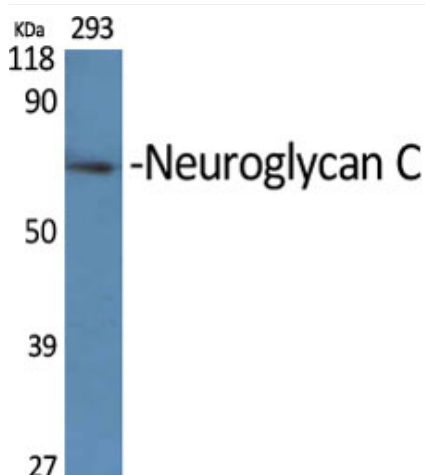
#### matters needing attention

Avoid repeated freezing and thawing!

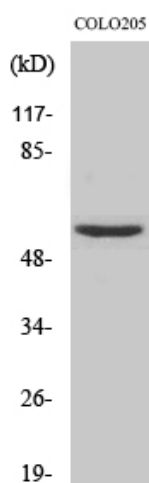
#### Usage suggestions

This product can be used in immunological reaction related experiments. For more information, please consult technical personnel.

### Products Images



Western Blot analysis of various cells using Neuroglycan C Polyclonal Antibody



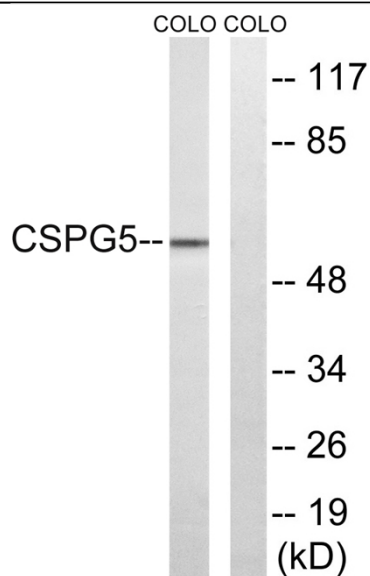
Western Blot analysis of HeLa cells using Neuroglycan C Polyclonal Antibody

**Nanjing BYabscience technology Co.,Ltd**

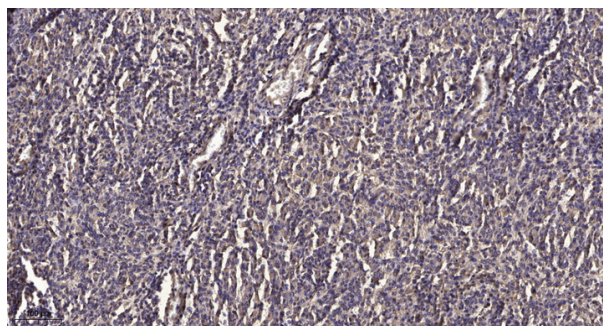
网址: [www.njbybio.com](http://www.njbybio.com)

官方热线: 025-5229-8998

监督电话: 15950492658



Western blot analysis of lysates from COLO and HeLa cells, using CSPG5 Antibody. The lane on the right is blocked with the synthesized peptide.



Immunohistochemical analysis of paraffin-embedded human meningioma. 1, Antibody was diluted at 1:200(4 ° overnight). 2, Tris-EDTA,pH9.0 was used for antigen retrieval. 3,Secondary antibody was diluted at 1:200(room temperature, 45min).