



Neurexin I Polyclonal Antibody

Catalog No	BYab-12750
Isotype	IgG
Reactivity	Human;Mouse;Rat
Applications	WB;IHC
Gene Name	NRXN1
Protein Name	Neurexin-1-alpha
Immunogen	The antiserum was produced against synthesized peptide derived from human NRXN1. AA range:502-551
Specificity	Neurexin I Polyclonal Antibody detects endogenous levels of Neurexin I protein.
Formulation	Liquid in PBS containing 50% glycerol, 0.5% BSA and 0.02% sodium azide.
Source	Polyclonal, Rabbit,IgG
Purification	The antibody was affinity-purified from rabbit antiserum by affinity-chromatography using epitope-specific immunogen.
Dilution	WB 1:500-2000;IHC-p 1:50-300
Concentration	1 mg/ml
Purity	≥90%
Storage Stability	-20°C/1 year
Synonyms	NRXN1; KIAA0578; Neurexin-1-alpha; Neurexin I-alpha
Observed Band	150kD
Cell Pathway	Cell junction, synapse, presynaptic cell membrane ; Single-pass type I membrane protein .
Tissue Specificity	Brain.
Function	cell morphogenesis, cell morphogenesis involved in differentiation, cell motion, cell adhesion, cell-cell signaling,synaptic transmission, axonogenesis, axon guidance, synaptogenesis, transmission of nerve impulse, biological adhesion, cell projection organization, neuron differentiation, neuron projection development, cellular component morphogenesis, cell part morphogenesis, extracellular structure organization, neuron development, cell morphogenesis involved in neuron differentiation, neuron projection morphogenesis, cell projection morphogenesis,synapse organization, neurological system process,

Nanjing BYabs science technology Co.,Ltd

网址: www.njbybio.com

官方热线: 025-5229-8998

监督电话: 15950492658



Background

NRXN1 (neurexin 1) encodes a single-pass type I membrane protein that belongs to the neurexin family. Neurexins are cell-surface receptors that bind neuroligins to form Ca^{2+} -dependent neurexin/neuroligin complexes at synapses in the central nervous system. This complex is required for efficient neurotransmission and is involved in the formation of synaptic contacts. Three members of this gene family have been studied in detail and are estimated to generate over 3000 variants through the use of two alternative promoters (alpha and beta) and extensive alternative splicing in each family member. Recently, a third promoter (gamma) was identified for NRXN1 in the 3' region. Mutations in NRXN1 are associated with Pitt-Hopkins-like syndrome-2 and may contribute to susceptibility to schizophrenia.

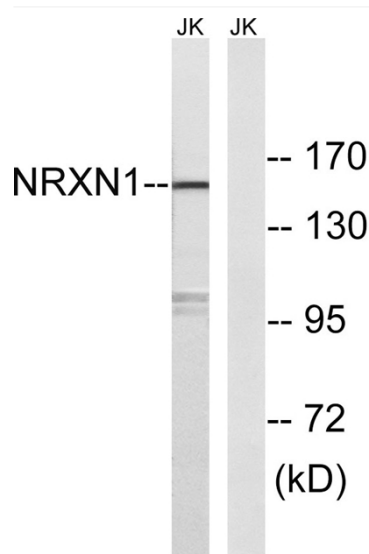
matters needing attention

Avoid repeated freezing and thawing!

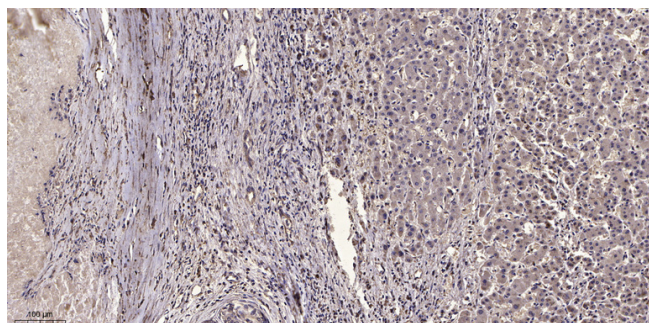
Usage suggestions

This product can be used in immunological reaction related experiments. For more information, please consult technical personnel.

Products Images



Western blot analysis of lysates from Jurkat cells, using NRXN1 Antibody. The lane on the right is blocked with the synthesized peptide.



Immunohistochemical analysis of paraffin-embedded human liver cancer. 1, Antibody was diluted at 1:200(4° overnight). 2, Tris-EDTA, pH9.0 was used for antigen retrieval. 3, Secondary antibody was diluted at 1:200(room temperature, 45min).

Nanjing BYabscience technology Co.,Ltd